

Gaso, 1550, Duplex, Piston Pump (Mud Pump)

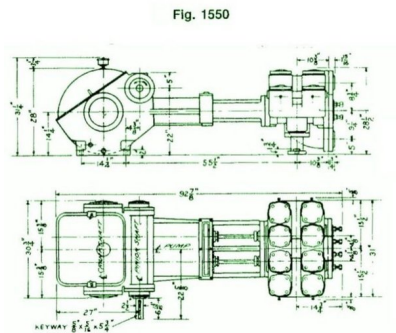
Pumps in this series

1550
1550-C

- 74 horsepower 10" stroke continuous duty double acting duplex pump
- Rated at pump speeds up to 85 RPM
- Maximum discharge pressures up to 1400 psi
- Equipped with cast iron fluid ends
- Equipped with internal gear reduction unit

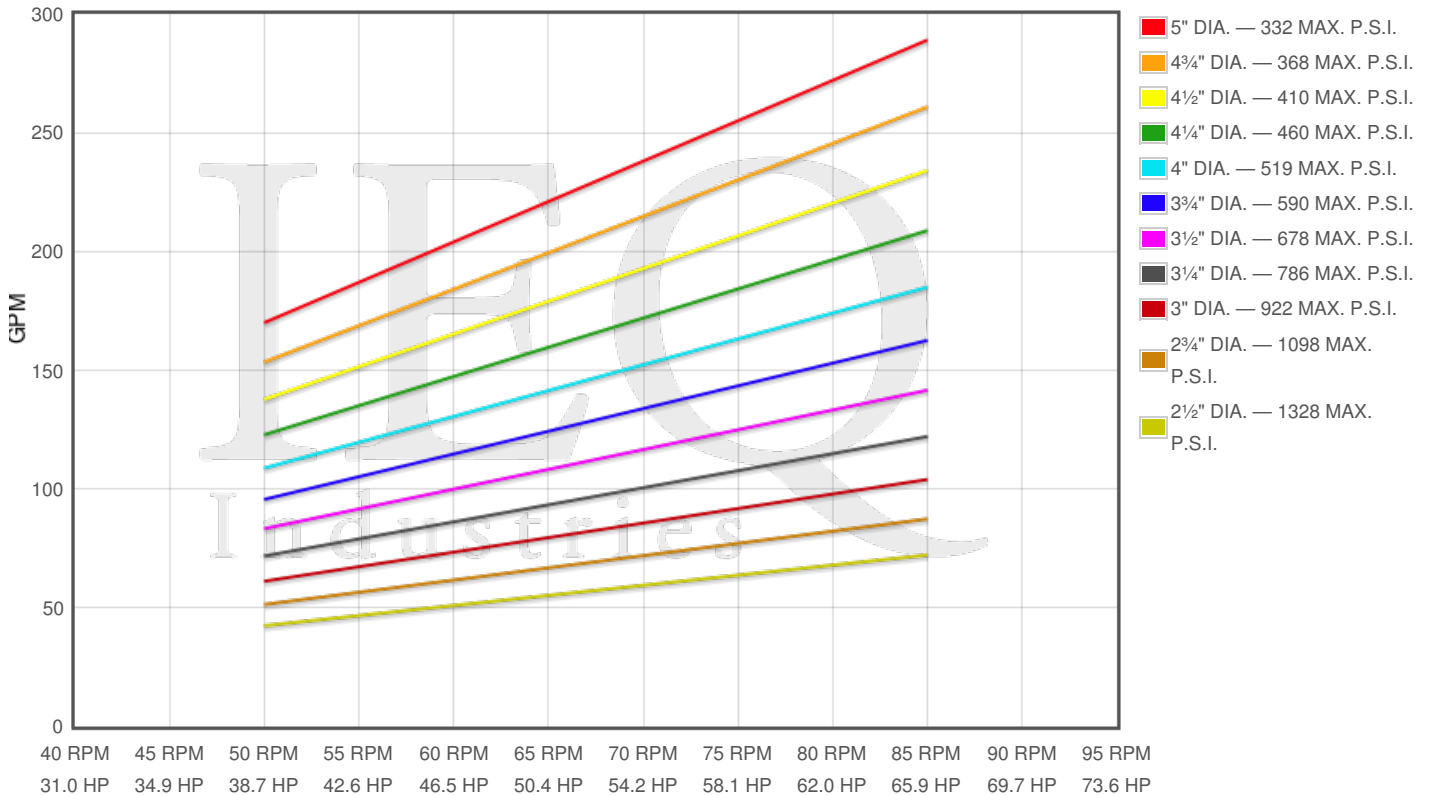
Specs

Spec	U.S. Standard
Type:	duplex
Minimum Piston Diameter:	2½"
Maximum Piston Diameter:	5"
Stroke length:	10"
Maximum Working Pressure:	1,440 PSI
Rod/Piston Load:	6520lb
Gallons per Minute:	282.0
Barrels per Day:	9669
Brake Horse Power:	69.4



Pump Curves

Hover over Power Curves to reveal RPM and GPM



Performance Data Table

Pump	English Units					50 RPM		60 RPM		70 RPM		80 RPM		85 RPM	
	Plunger Dia. In.	Plunger Area Sq. In.	BPD per RPM	GPM per RPM	Max Press. PSI	BPD	GPM	BPD	GPM	BPD	GPM	BPD	GPM	BPD	GPM
1550	5.000	19.6350	116.571	3.4000	332	5829	170	6994	204	8160	238	9326	272	9909	289
	4.750	17.7205	105.205	3.0685	368	5260	153	6312	184	7364	215	8416	245	8943	261
	4.500	15.9043	94.423	2.7540	410	4721	138	5665	165	6610	193	7554	220	8026	234
	4.250	14.1863	84.223	2.4565	460	4211	123	5053	147	5896	172	6738	197	7159	209
	4.000	12.5664	74.606	2.1760	519	3730	109	4476	131	5222	152	5968	174	6342	185
	3.750	11.0447	65.571	1.9125	590	3279	96	3934	115	4590	134	5246	153	5574	163
	3.500	9.6211	57.120	1.6660	678	2856	83	3427	100	3998	117	4570	133	4855	142
	3.250	8.2958	49.251	1.4365	786	2463	72	2955	86	3448	101	3940	115	4186	122
	3.000	7.0686	41.966	1.2240	922	2098	61	2518	73	2938	86	3357	98	3567	104
	2.750	5.9396	35.263	1.0285	1098	1763	51	2116	62	2468	72	2821	82	2997	87
	2.500	4.9087	29.143	0.8500	1328	1457	42	1749	51	2040	59	2331	68	2477	72

Features/Benefits

Power End Features

- Cast iron power frame
- Steel crankshaft
- Heavy-duty roller crankshaft bearings
- Bi-metal crankpin bearings
- Ductile iron connecting rods
- Allow steel crosshead pins
- Bronze bearing crosshead pin bushings

Internal gear reduction / 5.920:1 Ratio / with:

- Ductile iron herringbone type main gear
- Allow steel pinion shaft with herringbone pinion gear
- Heavy-duty roller pinion shaft bearings
- Flooded sump, splash distribution lubrication
- Cast iron crossheads with upper/lower oil grooves
- Rated rod load is 7475 lbs.

Fluid End Features

- Bolted Valve and cylinder head covers
- Bolted or threaded type glands & removable stuffing boxes
- File Hard Steel Piston Rods
- Standard Valve Types:
 - For crude oil transfer:
 - Steel wing guided valve & seat
 - For slush / mud service:
 - Steel wing guided with replaceable insert
- Standard Piston Types:
 - For crude oil transfer:
 - Cast iron piston body, ring type
 - Cast iron, chrome faced, piston rings
 - For slush / mud service:
 - Mission mud type piston w/replaceable rubbers
 - General service rod packing

Disclaimer I

This website is intended as a reference tool only. It has been constructed from published data that is based on manufacturer's sales and engineering documents that are either current, historical and obsolete. Much of the machinery data contained herein has been re-rated through the years with different engineering criteria which may be in conflict with legacy data. Much of the content published here is calculated online with the use of dynamic data using formulas and extrapolations considered to be sound engineering formulas and are correct to the degree that the data used is accurate. We have done our best to be as precise as as possible in this posting but do not represent any of the calculations or performance data to be entirely accurate. The data published here is intended to be general information rather than actual and to serve as a reference rather than a technical absolute. The user of such data should confirm such information independently.

Copyright and Disclaimers

WheatleyGasO.com is your resource for Gaso pumps, Gaso pump parts and a supplier of ORIGINAL GASO PARTS and equipment, new used and remanufactured Wheatley, GASO and Wheatley/GASO plunger and piston pumps and pump parts and is not affiliated with Wheatley/GASO Inc. or its parent company, National Oilwell Varco, Copyright ©2024 IEQ Industries, a Gallagher Fluid Handling Company. All rights reserved, *Used under license from IntelleQ Holdings, LLC.