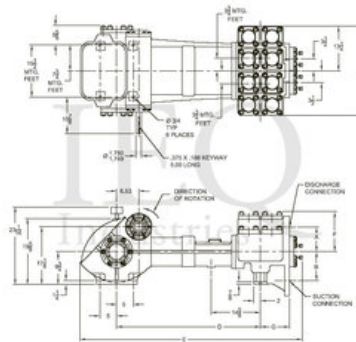


GasO, 1847-A, Duplex, Piston Pump (Mud Pump)

- 33 horsepower 6" stroke continuous duty double acting duplex pump
- Rated at pump speeds up to 100 RPM
- Maximum discharge pressures up to 990 psi
- Equipped with cast iron or cast steel fluid ends
- Equipped with internal gear reduction unit

Specs

Spec	U.S. Standard
Type:	duplex
Minimum Piston Diameter:	2½"
Maximum Piston Diameter:	4½"
Stroke length:	6"
Maximum Working Pressure:	990 PSI
Rod/Piston Load:	4850lb
Gallons per Minute:	160.0
Barrels per Day:	5486
Brake Horse Power:	31.0



Features/Benefits

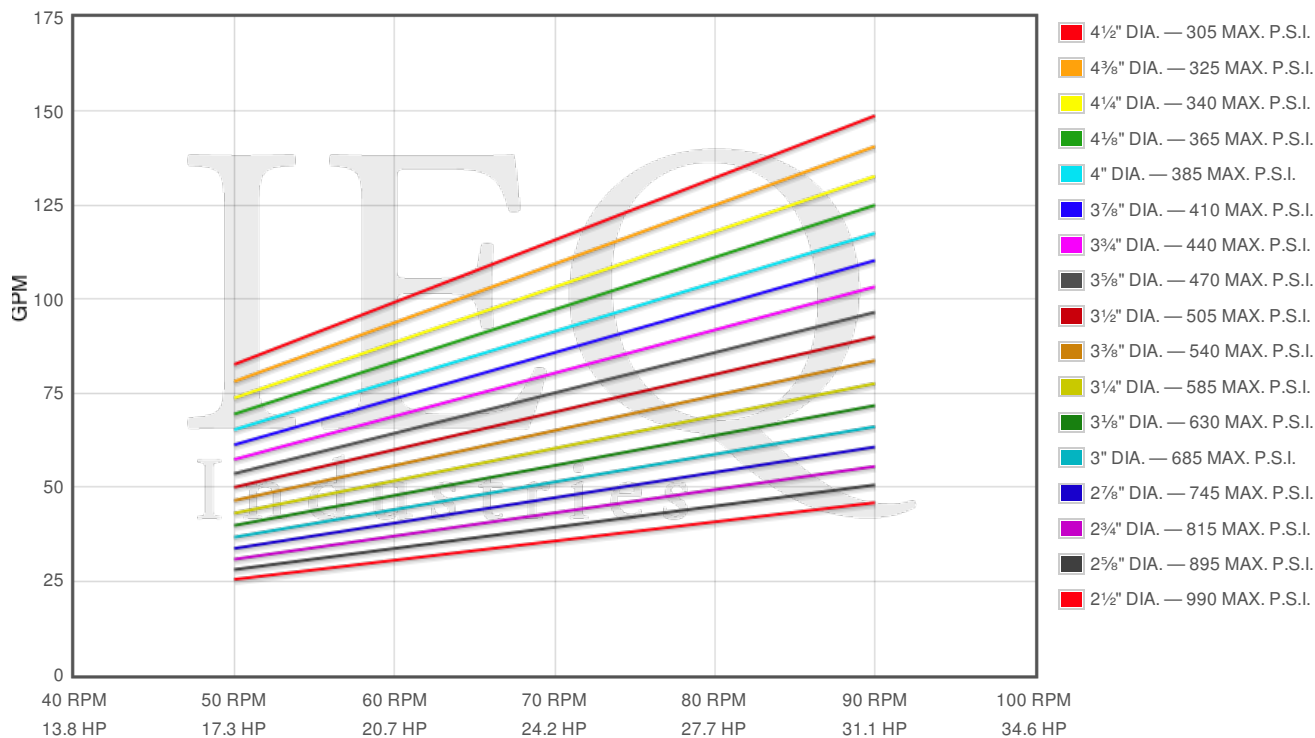
Power End Features

- Cast iron power frame
- Ductile iron crankshaft
- Heavy-duty roller crankshaft bearings
- Bi-metal crankpin bearings
- Ductile iron connecting rods
- Alloy steel crosshead pins
- Bronze bearing crosshead pin bushings
- Internal gear reduction / 5.100:1 Ratio / with
 - Ductile iron herringbone type main gear
 - Alloy steel pinion shaft with herringbone pinion gear
 - Heavy-duty roller pinion shaft bearings
- Flooded sump, splash distribution lubrication
- Rated rod load is 4850 lbs
- Cast iron crossheads with upper/lower oil grooves

Fluid End Features

- Bolted Valve and Cylinder Head Covers
- Bolted valve and cylinder head covers
- Bolted or threaded type glands and removable stuffing boxes
- File hard steel piston rods
- Standard valve types
 - For crude oil transfer:
 - Steel wing guided valve and seat
 - For slush/mud service:
 - Steel wing guided with replaceable insert
- Standard Piston Types
 - For crude oil transfer:
 - Cast iron piston body, ring type

- Cast iron, chrome faced, piston rings
- For slush/mud service:
 - Mission slush type piston w/ replaceable rubbers
- General service piston rod packing



Pump	English Units					50 RPM		60 RPM		70 RPM		80 RPM		90 RPM	
	Plunger Dia. In.	Plunger Area Sq. In.	BPD per RPM	GPM per RPM	Max Press. PSI	BPD	GPM	BPD	GPM	BPD	GPM	BPD	GPM	BPD	GPM
1847-A	4.500	15.9043	56.654	1.6524	305	2833	82.62	3399	99.14	3966	115.7	4532	132.2	5099	148.7
	4.250	14.1863	50.534	1.4739	342	2527	73.69	3032	88.43	3537	103.2	4043	117.9	4548	132.7
	4.000	12.5664	44.763	1.3056	386	2238	65.28	2686	78.34	3133	91.39	3581	104.4	4029	117.5
	3.750	11.0447	39.343	1.1475	439	1967	57.37	2361	68.85	2754	80.32	3147	91.8	3541	103.3
	3.500	9.6211	34.272	0.9996	504	1714	49.98	2056	59.98	2399	69.97	2742	79.97	3084	89.96
	3.250	8.2958	29.551	0.8619	585	1478	43.09	1773	51.71	2069	60.33	2364	68.95	2660	77.57
	3.000	7.0686	25.179	0.7344	686	1259	36.72	1511	44.06	1763	51.41	2014	58.75	2266	66.1
	2.750	5.9396	21.158	0.6171	817	1058	30.85	1269	37.03	1481	43.2	1693	49.37	1904	55.54
	2.500	4.9087	17.486	0.5100	988	874.3	25.5	1049	30.6	1224	35.7	1399	40.8	1574	45.9

Disclaimer I

This website is intended as a reference tool only. It has been constructed from published data that is based on manufacturer's sales and engineering documents that are either current, historical and obsolete. Much of the machinery data contained herein has been re-rated through the years with different engineering criteria which maybe in conflict with legacy data. Much of the content published here is calculated online with the use of dynamic data using formulas and extrapolations considered to be sound engineering formulas and are correct to the degree that the data used is accurate. We have done our best to be as precise as as possible in this posting but do not represent any of the calculations or performance data to be entirely accurate. The data published here is intended to be general information rather than actual and to serve as a reference rather than a technical absolute. The user of such data should confirm such information independently.

Copyright and Disclaimers

WheatleyGas.com is your resource for Gaso pumps, Gaso pump parts and a supplier of ORIGINAL GASO PARTS and equipment, new used and remanufactured Wheatley, GASO and Wheatley/GASO plunger and piston pumps and pump parts and is not affiliated with Wheatley/GASO Inc. or its parent company, National Oilwell Varco,