

Gaso, 2651, Duplex, Piston Pump (Mud Pump)

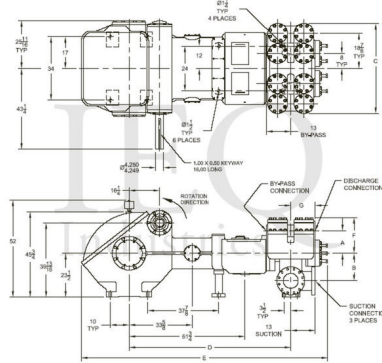
Pumps in this series

- [2651](#)
- [2652](#)

- 250 horsepower 12" stroke continuous duty double acting duplex pump
- Rated at pump speeds up to 85 RPM
- Maximum discharge pressures up to 1,760 psi
- Equipped with cast steel fluid ends
- Equipped with internal gear reduction unit

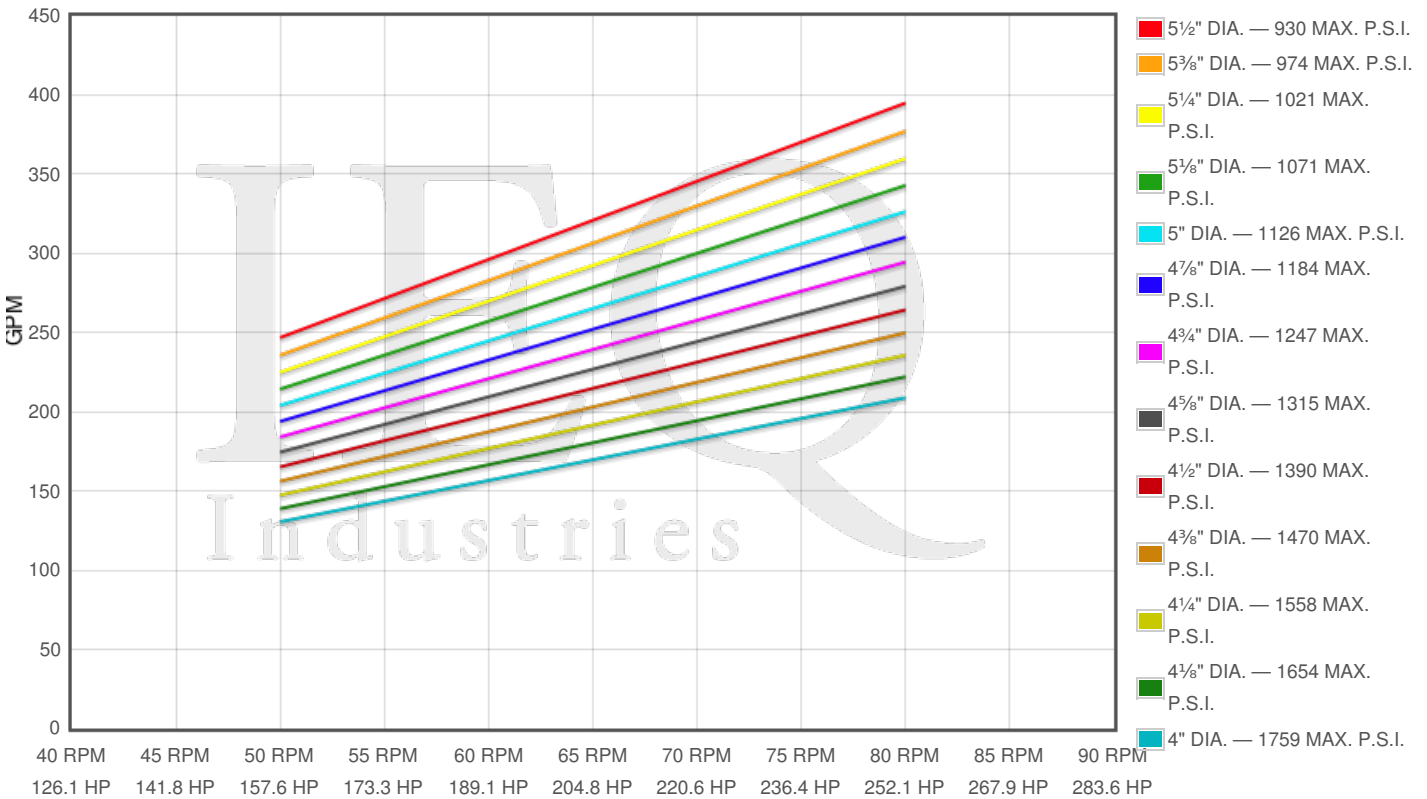
Specs

Spec	U.S. Standard
Type:	duplex
Minimum Piston Diameter:	4"
Maximum Piston Diameter:	5½"
Stroke length:	12"
Maximum Working Pressure:	1,760 PSI
Rod/Piston Load:	22100lb
Gallons per Minute:	391.0
Barrels per Day:	13406
Brake Horse Power:	243.0



Pump Curves

Hover over Power Curves to reveal RPM and GPM



Performance Data Table

Pump	English Units					50 RPM		60 RPM		70 RPM		80 RPM	
	Plunger Dia. In.	Plunger Area Sq. In.	BPD per RPM	GPM per RPM	Max Press. PSI	BPD	GPM	BPD	GPM	BPD	GPM	BPD	GPM
2651	5.500	23.7583	169.261	4.9368	930	8463	247	10156	296	11848	346	13541	395
	5.250	21.6475	154.224	4.4982	1021	7711	225	9253	270	10796	315	12338	360
	5.000	19.6350	139.885	4.0800	1126	6994	204	8393	245	9792	286	11191	326
	4.750	17.7205	126.247	3.6822	1247	6312	184	7575	221	8837	258	10100	295
	4.500	15.9043	113.307	3.3048	1390	5665	165	6798	198	7932	231	9065	264
	4.250	14.1863	101.067	2.9478	1558	5053	147	6064	177	7075	206	8085	236
	4.000	12.5664	89.527	2.6112	1759	4476	131	5372	157	6267	183	7162	209

Features/Benefits

Power End Features:

- Cast iron power frame
- Steel crankshaft
- Bi-metal crankpin bearings
- Ductile iron connecting rods
- Heavy-duty roller crankshaft bearings
- Alloy steel crosshead pins
- Bronze bearing crosshead pin bushings
- Internal gear reduction / 5.05:1/Ratio/ with:
 - Ductile iron herringbone type main gear
 - Allow steel pinion shaft with herringbone pinion gea
- Heavy-duty roller pinion shaft bearings
- Flooded sump, splash distribution and lubrication
- Cast iron crossheads with upper/lower oil grooves
- Rated rod load is 22100 lbs.

Fluid End Features:

- Bolted Valve and Cylinder head covers
- Bolted or threaded type glands & removable stuffing boxes
- File hard steel piston rods
- Standard valve types
 - For crude oil transfer:
 - Steel wing guided valve & seat
 - For slush / mud service:
 - Steel wing guided with replaceable insert
- Standard Valve Types:
 - For crude oil transfer:
 - Cast iron piston body, ring type
 - Cast iron, chrome faced, piston rings
 - For slush / mud service:
 - Mission slush type piston w/ replaceable rubbers
- General service piston rod packing

Disclaimer I

This website is intended as a reference tool only. It has been constructed from published data that is based on manufacturer's sales and engineering documents that are either current, historical and obsolete. Much of the machinery data contained herein has been re-rated through the years with different engineering criteria which maybe in conflict with legacy data. Much of the content published here is calculated online with the use of dynamic data using formulas and extrapolations considered to be sound engineering formulas and are correct to the degree that the data used is accurate. We have done our best to be as precise as as possible in this posting but do not represent any of the calculations or performance data to be entirely accurate. The data published here is intended to be general information rather than actual and to serve as a reference rather than a technical absolute. The user of such data should confirm such information independently.

Copyright and Disclaimers

WheatleyGas.com is your resource for Gaso pumps, Gaso pump parts and a supplier of ORIGINAL GASO PARTS and equipment, new used and remanufactured Wheatley, GASO and Wheatley/GASO plunger and piston pumps and pump parts and is not affiliated with Wheatley/GASO Inc. or its parent company, National Oilwell Varco, Copyright ©2024 IEQ Industries, a Gallagher Fluid Handling Company. All rights reserved, *Used under license from IntelleQ Holdings, LLC.