

## Wheatley, HP125-AM (110Q-3M), Quintuplex, Plunger Pump

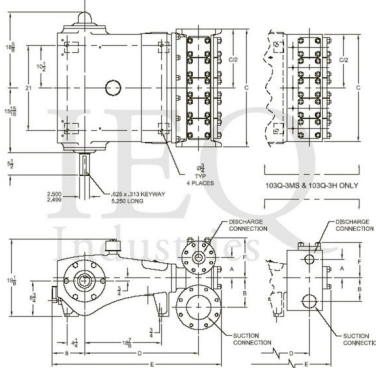
### Pumps in this series

- [HP125-AL \(110Q-3L\)](#)
- [HP125-AM \(110Q-3M\)](#)
- [HP125-H \(110Q-H\)](#)
- [HP125-M](#)
- [HP125-MS \(110Q-3MS\)](#)

- 110 horsepower 3 1/2" stroke horizontal quintuplex single acting plunger pump
- Available in four fluid end materials
- Pump speeds up to 540 RPM
- Multiple accessory gear reduction unit ratios

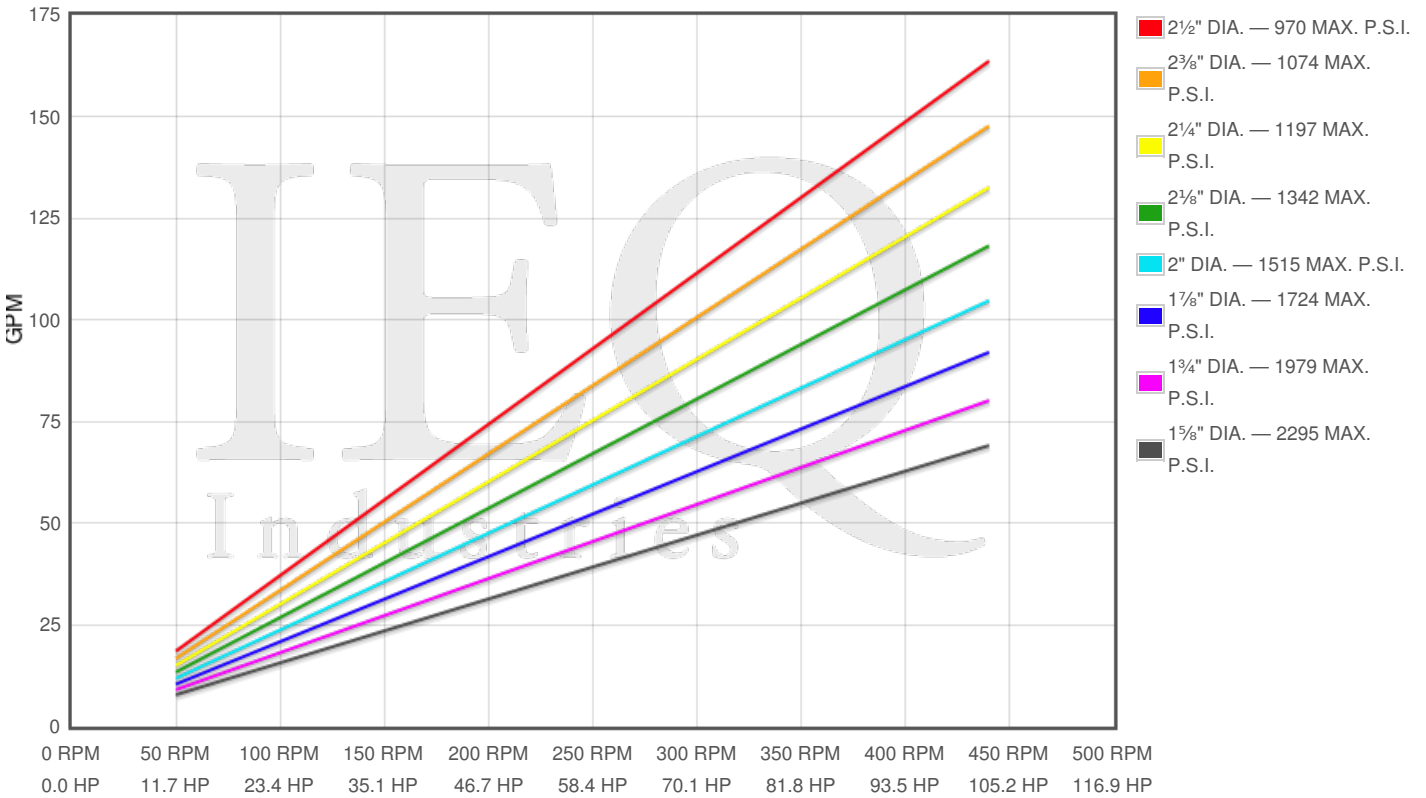
### Specs

Spec	U.S. Standard
Type:	quintuplex
Minimum Plunger Diameter:	1 5/8"
Maximum Plunger Diameter:	2 1/2"
Stroke length:	3 1/2"
Maximum Working Pressure:	2,295 PSI
Rod/Piston Load:	4760lb
Gallons per Minute:	163.6
Barrels per Day:	5609
Brake Horse Power:	110.0



### Pump Curves

Hover over Power Curves to reveal RPM and GPM



### Performance Data Table

Pump	English Units					50 RPM		150 RPM		250 RPM		350 RPM		440 RPM	
	Plunger Dia. In.	Plunger Area Sq. In.	BPD per RPM	GPM per RPM	Max Press. PSI	BPD	GPM	BPD	GPM	BPD	GPM	BPD	GPM	BPD	GPM
HP125-AM 110Q-3M	2.500	4.9087	12.750	0.3719	970	637	19	1913	56	3188	93	4463	130	5610	164
	2.375	4.4301	11.507	0.3356	1074	575	17	1726	50	2877	84	4027	117	5063	148
	2.250	3.9761	10.327	0.3012	1197	516	15	1549	45	2582	75	3615	105	4544	133
	2.125	3.5466	9.212	0.2687	1342	461	13	1382	40	2303	67	3224	94	4053	118
	2.000	3.1416	8.160	0.2380	1515	408	12	1224	36	2040	59	2856	83	3590	105
	1.875	2.7612	7.172	0.2092	1724	359	10	1076	31	1793	52	2510	73	3156	92
	1.750	2.4053	6.247	0.1822	1979	312	9	937	27	1562	46	2187	64	2749	80
	1.625	2.0739	5.387	0.1571	2295	269	8	808	24	1347	39	1885	55	2370	69

## Features/Benefits

---

- Cast iron power frame
- Ductile Iron Crankshaft
- Heavy-duty, tapered roller crankshaft bearings
- Precision type, aluminum alloy crankpin bearings
- Cast iron crossheads with upper/lower oil grooves
- Internal pressure lubrication
- Ductile iron connecting rods
- Alloy steel crosshead pins
- Bronze bearing crosshead pin bushings
- Rated rod load is 5090 lbs.
- Plungers - Solid Ceramic, or Tungsten coated

## Disclaimer I

---

This website is intended as a reference tool only. It has been constructed from published data that is based on manufacturer's sales and engineering documents that are either current, historical and obsolete. Much of the machinery data contained herein has been re-rated through the years with different engineering criteria which maybe in conflict with legacy data. Much of the content published here is calculated online with the use of dynamic data using formulas and extrapolations considered to be sound engineering formulas and are correct to the degree that the data used is accurate. We have done our best to be as precise as as possible in this posting but do not represent any of the calculations or performance data to be entirely accurate. The data published here is intended to be general information rather than actual and to serve as a reference rather than a technical absolute. The user of such data should confirm such information independently.

---

### Copyright and Disclaimers

WheatleyGas.com is your resource for Gaso pumps, Gaso pump parts and a supplier of ORIGINAL GASO PARTS and equipment, new used and remanufactured Wheatley, GASO and Wheatley/GASO plunger and piston pumps and pump parts and is not affiliated with Wheatley/GASO Inc. or its parent company, National Oilwell Varco, p Copyright ©2017, IntelIQ Holdings, LLC. All rights reserved, \*Used under license from IntelIQ Holdings, LLC.