

Wheatley, HP360-H (308T-7H), Triplex, Plunger Pump

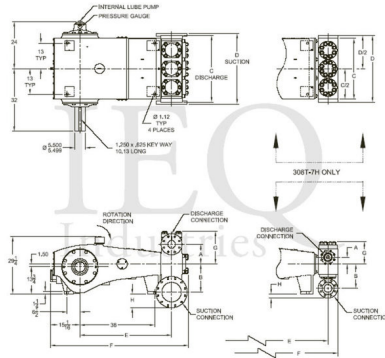
Pumps in this series

- [HP360-AL \(308T-7L\)](#)
- [HP360-AM \(308T-7M\)](#)
- [HP360-H \(308T-7H\)](#)
- [HP360-XL \(308T-7XL\)](#)

- 308 horsepower 7" stroke horizontal triplex single acting plunger pump
- Available in three fluid end materials
- Pump speeds up to 265 RPM

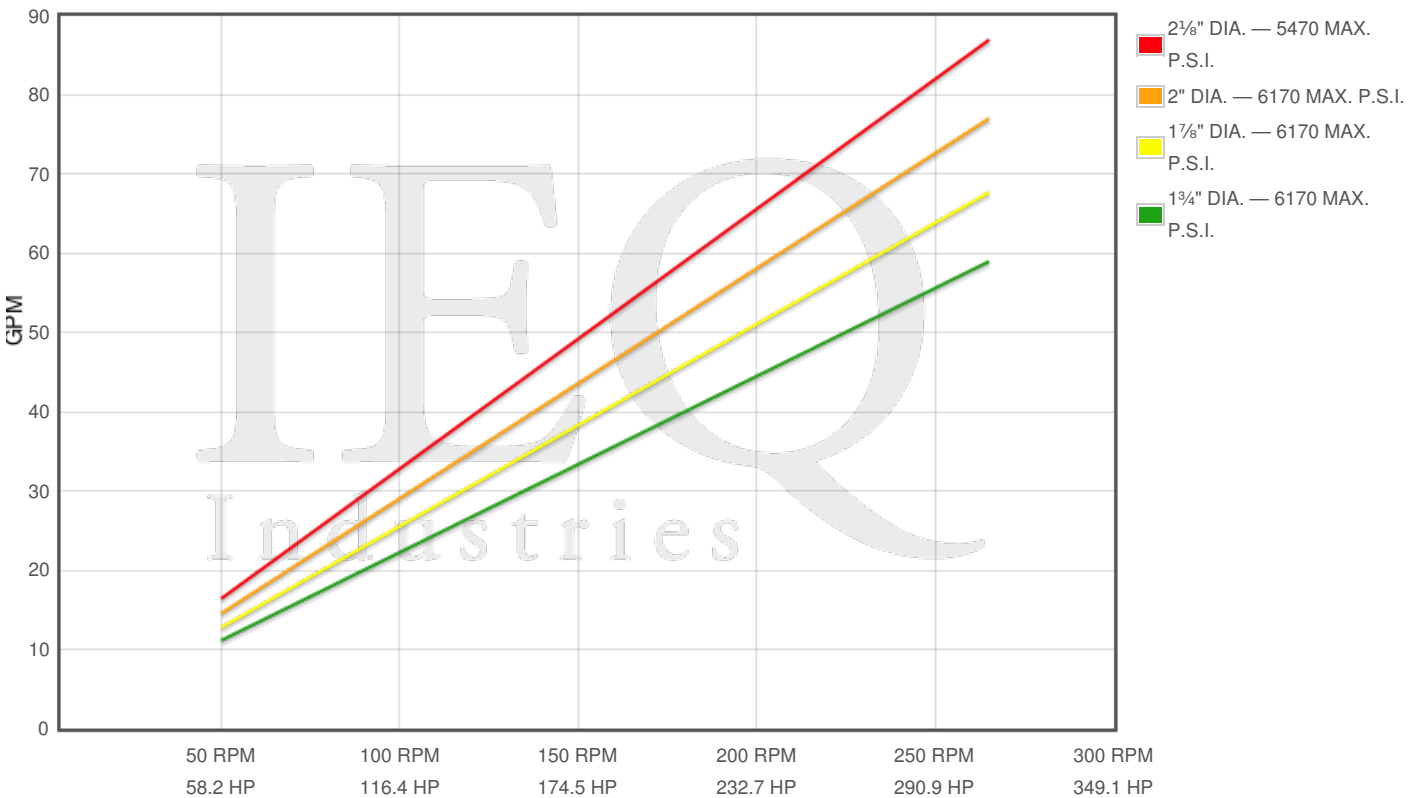
Specs

Spec	U.S. Standard
Type:	triplex
Minimum Plunger Diameter:	1 3/4"
Maximum Plunger Diameter:	2 1/8"
Stroke length:	7 1/8"
Maximum Working Pressure:	6,170 PSI
Rod/Piston Load:	19400lb
Gallons per Minute:	87.0
Barrels per Day:	2983
Brake Horse Power:	308.0



Pump Curves

Hover over Power Curves to reveal RPM and GPM



Performance Data Table

Pump	English Units					50 RPM		150 RPM		250 RPM		265 RPM	
	Plunger Dia. In.	Plunger Area Sq. In.	BPD per RPM	GPM per RPM	Max Press. PSI	BPD	GPM	BPD	GPM	BPD	GPM	BPD	GPM
HP360-H 308T-7H	2.125	3.5466	11.252	0.3282	5470	563	16	1688	49	2813	82	2982	87
	2.000	3.1416	9.967	0.2907	6170	498	15	1495	44	2492	73	2641	77
	1.875	2.7612	8.760	0.2555	6170	438	13	1314	38	2190	64	2321	68
	1.750	2.4053	7.631	0.2226	6170	382	11	1145	33	1908	56	2022	59

Features/Benefits

- Cast iron power frame
- Ductile Iron crankshaft
- Alloy steel crosshead pins
- Bronze bearing crosshead pin bushings
- Heavy-duty, tapered roller crankshaft bearings

- Precision type, aluminum alloy crankpin bearings
- Cast iron crossheads with upper/lower oil grooves
- Stainless steel extension rods
- Internal pressure lubrication
- Bolted Type Valve Covers
- Removable Stuffing Boxes & Glands
- Plungers - Ceramic, or Tungsten Coated

Disclaimer I

This website is intended as a reference tool only. It has been constructed from published data that is based on manufacturer's sales and engineering documents that are either current, historical and obsolete. Much of the machinery data contained herein has been re-rated through the years with different engineering criteria which maybe in conflict with legacy data. Much of the content published here is calculated online with the use of dynamic data using formulas and extrapolations considered to be sound engineering formulas and are correct to the degree that the data used is accurate. We have done our best to be as precise as as possible in this posting but do not represent any of the calculations or performance data to be entirely accurate. The data published here is intended to be general information rather than actual and to serve as a reference rather than a technical absolute. The user of such data should confirm such information independently.

Copyright and Disclaimers

WheatleyGas.com is your resource for Gaso pumps, Gaso pump parts and a supplier of ORIGINAL GASO PARTS and equipment, new used and remanufactured Wheatley, GASO and Wheatley/GASO plunger and piston pumps and pump parts and is not affiliated with Wheatley/GASO Inc. or its parent company, National Oilwell Varco, Copyright ©2024 IEQ Industries, a Gallagher Fluid Handling Company. All rights reserved, *Used under license from IntelIQ Holdings, LLC.