

## Wheatley, Q7600-H, Quintuplex, Plunger Pump

### Pumps in this series

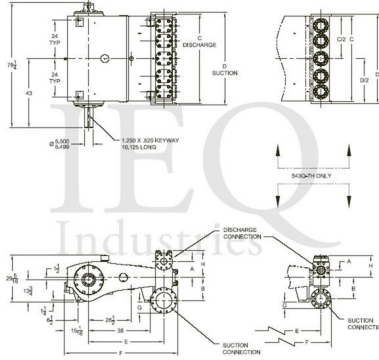
[Q7600-H](#)

[Q7600-L](#)

[Q7600-M](#)

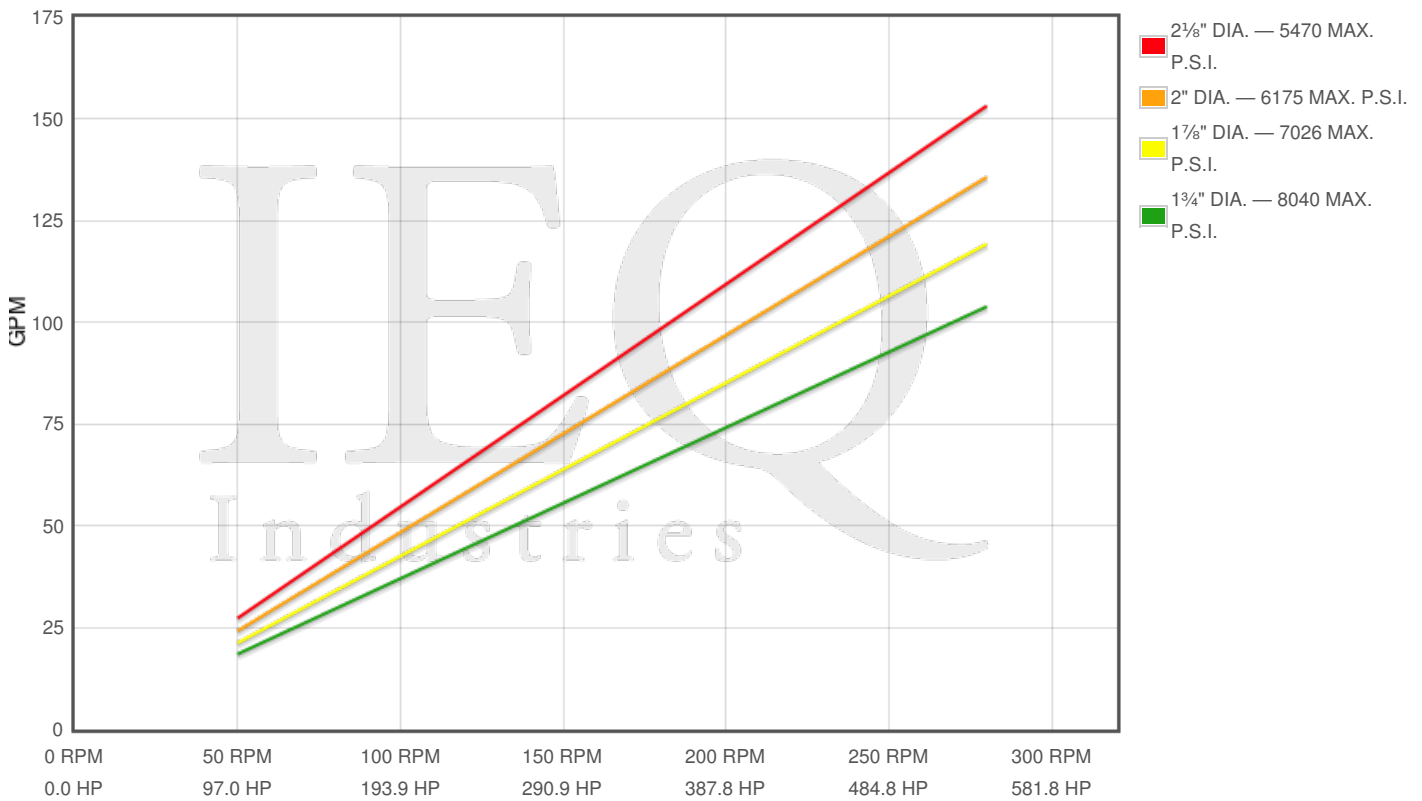
### Specs

Spec	U.S. Standard
Type:	quintuplex
Minimum Plunger Diameter:	1 3/4"
Maximum Plunger Diameter:	2 1/8"
Stroke length:	7 1/8"
Maximum Working Pressure:	8,040 PSI
Rod/Piston Load:	19400lb
Gallons per Minute:	153.0
Barrels per Day:	5246
Brake Horse Power:	541.0



### Pump Curves

Hover over Power Curves to reveal RPM and GPM



### Performance Data Table

Pump	English Units					50 RPM		150 RPM		250 RPM		280 RPM	
	Plunger Dia. In.	Plunger Area Sq. In.	BPD per RPM	GPM per RPM	Max Press. PSI	BPD	GPM	BPD	GPM	BPD	GPM	BPD	GPM
Q7600-H	2.125	3.5466	18.753	0.5470	5470	938	27	2813	82	4688	137	5251	153
	2.000	3.1416	16.611	0.4845	6175	831	24	2492	73	4153	121	4651	136
	1.875	2.7612	14.600	0.4258	7026	730	21	2190	64	3650	106	4088	119
	1.750	2.4053	12.718	0.3709	8040	636	19	1908	56	3180	93	3561	104

## Disclaimer I

---

This website is intended as a reference tool only. It has been constructed from published data that is based on manufacturer's sales and engineering documents that are either current, historical and obsolete. Much of the machinery data contained herein has been re-rated through the years with different engineering criteria which maybe in conflict with legacy data. Much of the content published here is calculated online with the use of dynamic data using formulas and extrapolations considered to be sound engineering formulas and are correct to the degree that the data used is accurate. We have done our best to be as precise as as possible in this posting but do not represent any of the calculations or performance data to be entirely accurate. The data published here is intended to be general information rather than actual and to serve as a reference rather than a technical absolute. The user of such data should confirm such information independently.

---

### Copyright and Disclaimers

WheatleyGas.com is your resource for Gaso pumps, Gaso pump parts and a supplier of ORIGINAL GASO PARTS and equipment, new used and remanufactured Wheatley, GASO and Wheatley/GASO plunger and piston pumps and pump parts and is not affiliated with Wheatley/GASO Inc. or its parent company, National Oilwell Varco, Copyright ©2024 IEQ Industries, a Gallagher Fluid Handling Company. All rights reserved, \*Used under license from IntelleQ Holdings, LLC.