

## Gaso, T100-4 (101T-4L), Triplex, Plunger Pump

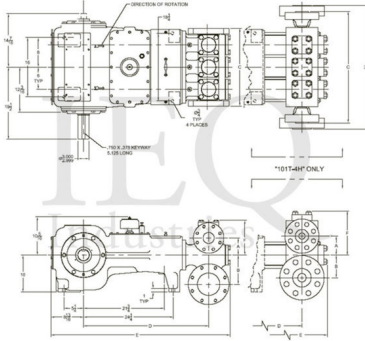
### Pumps in this series

- [T100-2 \(101T-4H\)](#)
- [T100-3 \(101T-4M\)](#)
- [T100-4 \(101T-4L\)](#)

- 101 horsepower 4 1/2" stroke horizontal triplex single acting plunger pump
- Pump speeds up to 400 RPM
- Multiple accessory gear reduction unit ratios
- Available in three fluid end materials

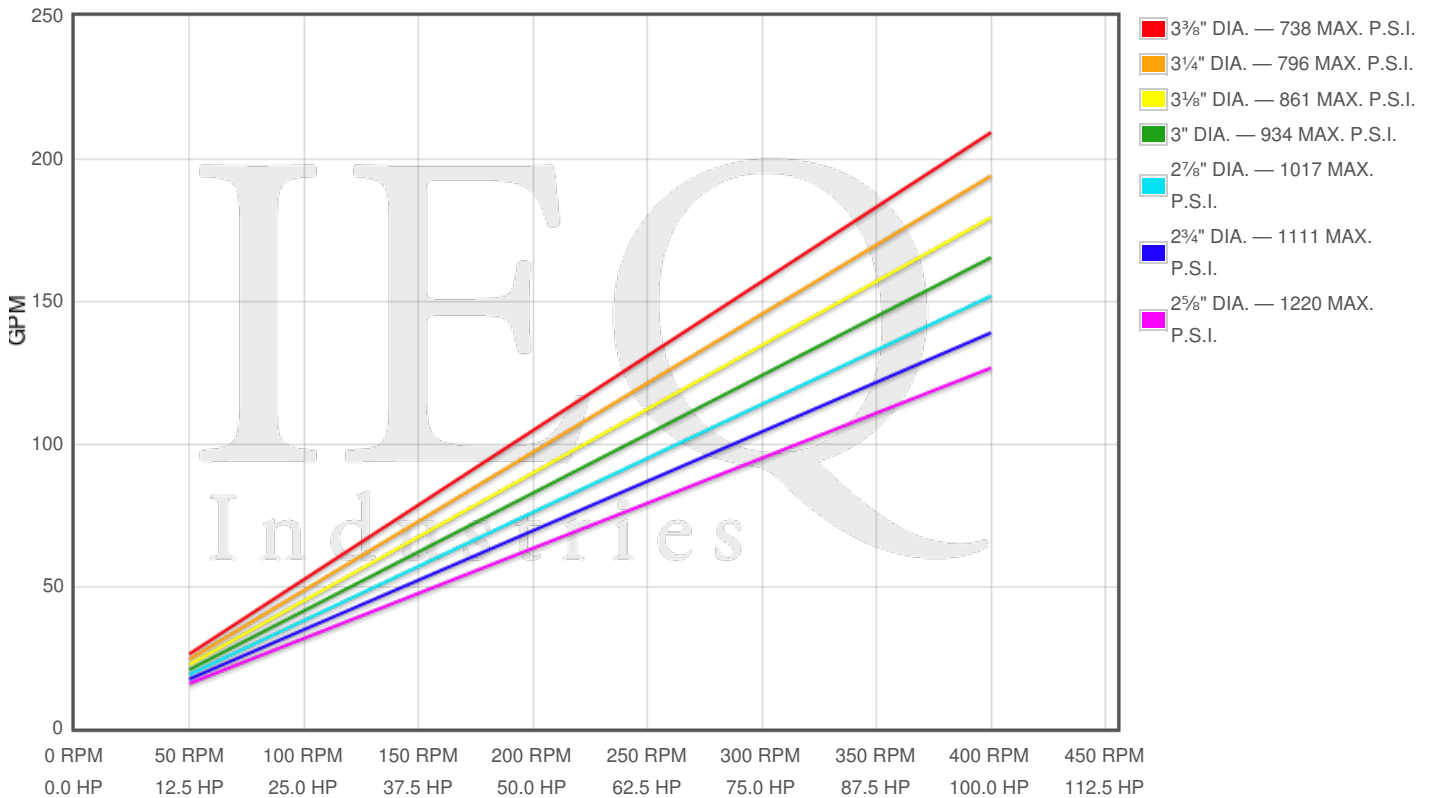
### Specs

Spec	U.S. Standard
Type:	triplex
Minimum Plunger Diameter:	2 5/8"
Maximum Plunger Diameter:	3 3/8"
Stroke length:	4 1/2"
Maximum Working Pressure:	1,220 PSI
Rod/Piston Load:	6600lb
Gallons per Minute:	209.0
Barrels per Day:	7166
Brake Horse Power:	100.0



### Pump Curves

Hover over Power Curves to reveal RPM and GPM



### Performance Data Table

Pump	English Units					50 RPM		150 RPM		250 RPM		350 RPM		400 RPM	
	Plunger Dia. In.	Plunger Area Sq. In.	BPD per RPM	GPM per RPM	Max Press. PSI	BPD	GPM	BPD	GPM	BPD	GPM	BPD	GPM	BPD	GPM
T100-4 101T-4L	3.375	8.9462	17.926	0.5228	738	896	26	2689	78	4481	131	6274	183	7170	209
	3.250	8.2958	16.622	0.4848	796	831	24	2493	73	4156	121	5818	170	6649	194
	3.125	7.6699	15.368	0.4482	861	768	22	2305	67	3842	112	5379	157	6147	179
	3.000	7.0686	14.163	0.4131	934	708	21	2125	62	3541	103	4957	145	5665	165
	2.875	6.4918	13.008	0.3794	1017	650	19	1951	57	3252	95	4553	133	5203	152
	2.750	5.9396	11.901	0.3471	1111	595	17	1785	52	2975	87	4165	121	4761	139
	2.625	5.4119	10.844	0.3163	1220	542	16	1627	47	2711	79	3795	111	4338	127

### Features/Benefits

- Cast iron power frame

- Ductile iron connecting rods
- Alloy steel crosshead pins
- Heavy-duty, tapered roller crankshaft bearings
- Precision type, aluminum alloy crankpin bearings
- Bronze bearing crosshead pin bushings
- Cast iron crossheads with upper/lower oil grooves
- Rated rod load is 6600 lbs.

## Disclaimer I

---

This website is intended as a reference tool only. It has been constructed from published data that is based on manufacturer's sales and engineering documents that are either current, historical and obsolete. Much of the machinery data contained herein has been re-rated through the years with different engineering criteria which maybe in conflict with legacy data. Much of the content published here is calculated online with the use of dynamic data using formulas and extrapolations considered to be sound engineering formulas and are correct to the degree that the data used is accurate. We have done our best to be as precise as as possible in this posting but do not represent any of the calculations or performance data to be entirely accurate. The data published here is intended to be general information rather than actual and to serve as a reference rather than a technical absolute. The user of such data should confirm such information independently.

---

### Copyright and Disclaimers

WheatleyGas.com is your resource for Gaso pumps, Gaso pump parts and a supplier of ORIGINAL GASO PARTS and equipment, new used and remanufactured Wheatley, GASO and Wheatley/GASO plunger and piston pumps and pump parts and is not affiliated with Wheatley/GASO Inc. or its parent company, National Oilwell Varco, p Copyright ©2017, IntelIQ Holdings, LLC. All rights reserved, \*Used under license from IntelIQ Holdings, LLC.