

## Gaso, T140-2 (133T-4H), Triplex, Plunger Pump

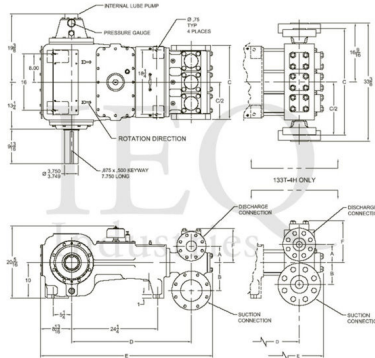
### Pumps in this series

- [T140-2 \(133T-4H\)](#)
- [T140-3 \(133T-4M\)](#)
- [T140-4 \(133T-4L\)](#)

- 133 horsepower 4 1/2" stroke horizontal triplex single acting plunger pump
- Available in three fluid end materials
- Pump speeds up to 400 RPM
- Multiple gear reduction unit ratios

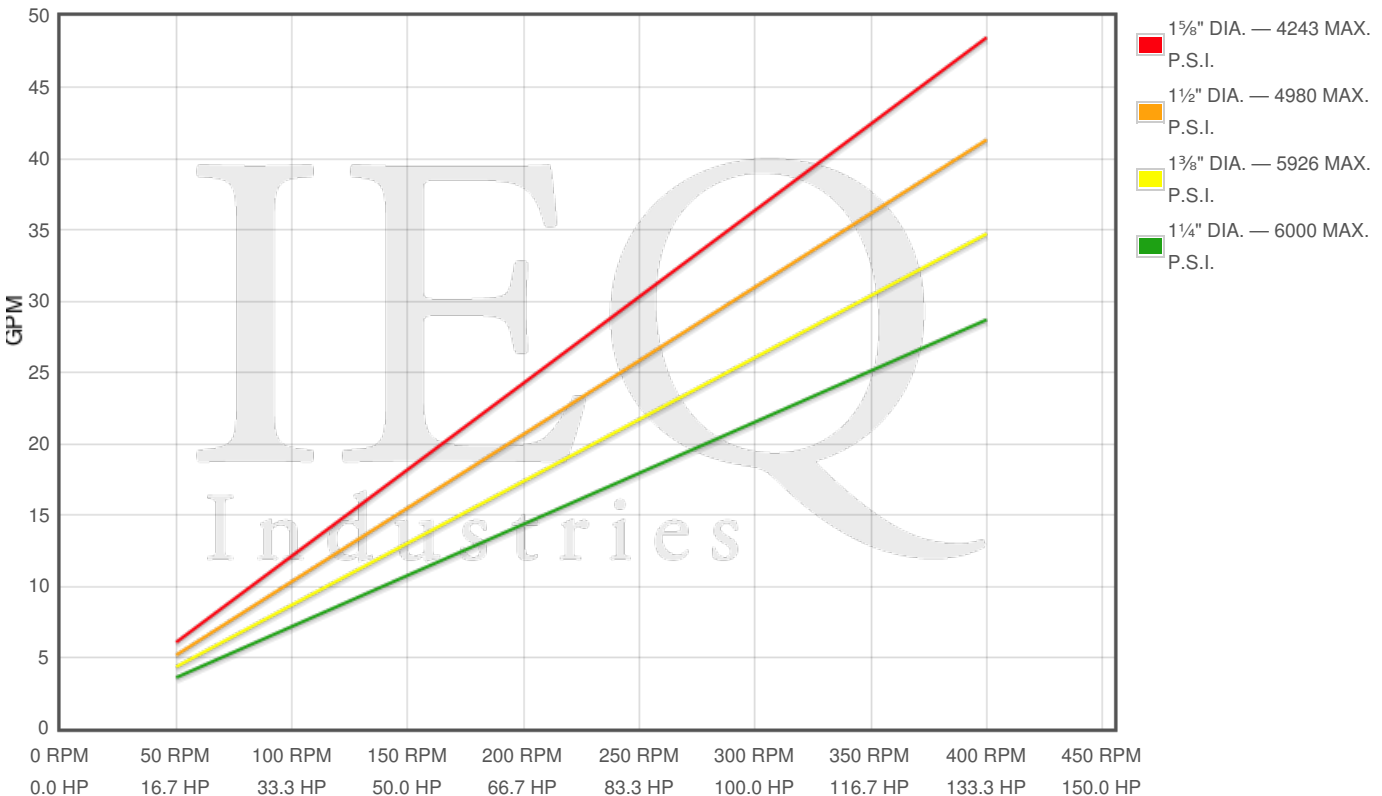
### Specs

Spec	U.S. Standard
Type:	triplex
Minimum Plunger Diameter:	1 1/4"
Maximum Plunger Diameter:	1 5/8"
Stroke length:	4 1/2"
Maximum Working Pressure:	6,000 PSI
Rod/Piston Load:	8800lb
Gallons per Minute:	48.5
Barrels per Day:	1663
Brake Horse Power:	133.0



### Pump Curves

Hover over Power Curves to reveal RPM and GPM



### Performance Data Table

Pump	English Units					50 RPM		150 RPM		250 RPM		350 RPM		400 RPM	
	Plunger Dia. In.	Plunger Area Sq. In.	BPD per RPM	GPM per RPM	Max Press. PSI	BPD	GPM	BPD	GPM	BPD	GPM	BPD	GPM	BPD	GPM
T140-2	1.625	2.0739	4.156	0.1212	4243	208	6	623	18	1039	30	1455	42	1662	48
	1.500	1.7671	3.541	0.1033	4980	177	5	531	15	885	26	1239	36	1416	41
133T-4H	1.375	1.4849	2.975	0.0868	5926	149	4	446	13	744	22	1041	30	1190	35
	1.250	1.2272	2.459	0.0717	6000	123	4	369	11	615	18	861	25	984	29

### Features/Benefits

- Cast iron power frame
- Forged Steel Crankshaft
- Heavy-duty, tapered roller crankshaft bearings
- Precision type, aluminum alloy crankpin bearings
- Ductile iron connecting rods

- Minimum pump speed is 150 with standard power end construction
- Bronze bearing crosshead pin bushings
- Cast iron crossheads with upper/lower oil grooves
- Stainless steel extension rods
- Internal pressure lubrication
- Alloy steel crosshead pins
- Rated rod load is 8800 lbs.
- Plungers - Solid Ceramic, or Tungsten coated
- Spherical suction and discharge valves
- Valve Seat & Valve Body: Nitronic 50
- Spring: Inconel
- Cage: 316L Stainless Steel
- Severe duty valves with inserts available

## Disclaimer I

---

This website is intended as a reference tool only. It has been constructed from published data that is based on manufacturer's sales and engineering documents that are either current, historical and obsolete. Much of the machinery data contained herein has been re-rated through the years with different engineering criteria which maybe in conflict with legacy data. Much of the content published here is calculated online with the use of dynamic data using formulas and extrapolations considered to be sound engineering formulas and are correct to the degree that the data used is accurate. We have done our best to be as precise as as possible in this posting but do not represent any of the calculations or performance data to be entirely accurate. The data published here is intended to be general information rather than actual and to serve as a reference rather than a technical absolute. The user of such data should confirm such information independently.

---

### Copyright and Disclaimers

WheatleyGas.com is your resource for Gaso pumps, Gaso pump parts and a supplier of ORIGINAL GASO PARTS and equipment, new used and remanufactured Wheatley, GASO and Wheatley/GASO plunger and piston pumps and pump parts and is not affiliated with Wheatley/GASO Inc. or its parent company, National Oilwell Varco, Copyright ©2024 IEQ Industries, a Gallagher Fluid Handling Company. All rights reserved, \*Used under license from IntelleQ Holdings, LLC.