

Gaso, T140-3 (133T-4M), Triplex, Plunger Pump

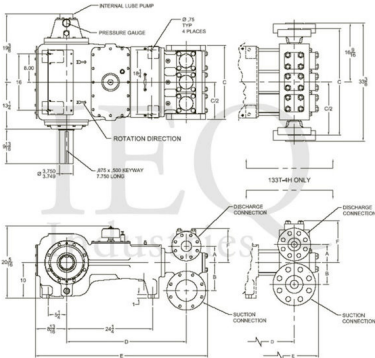
Pumps in this series

- [T140-2 \(133T-4H\)](#)
- [T140-3 \(133T-4M\)](#)
- [T140-4 \(133T-4L\)](#)

- 133 horsepower 4 1/2" stroke horizontal triplex single acting plunger pump
- Available in three fluid end materials
- Pump speeds up to 400 RPM
- Multiple gear reduction unit ratios

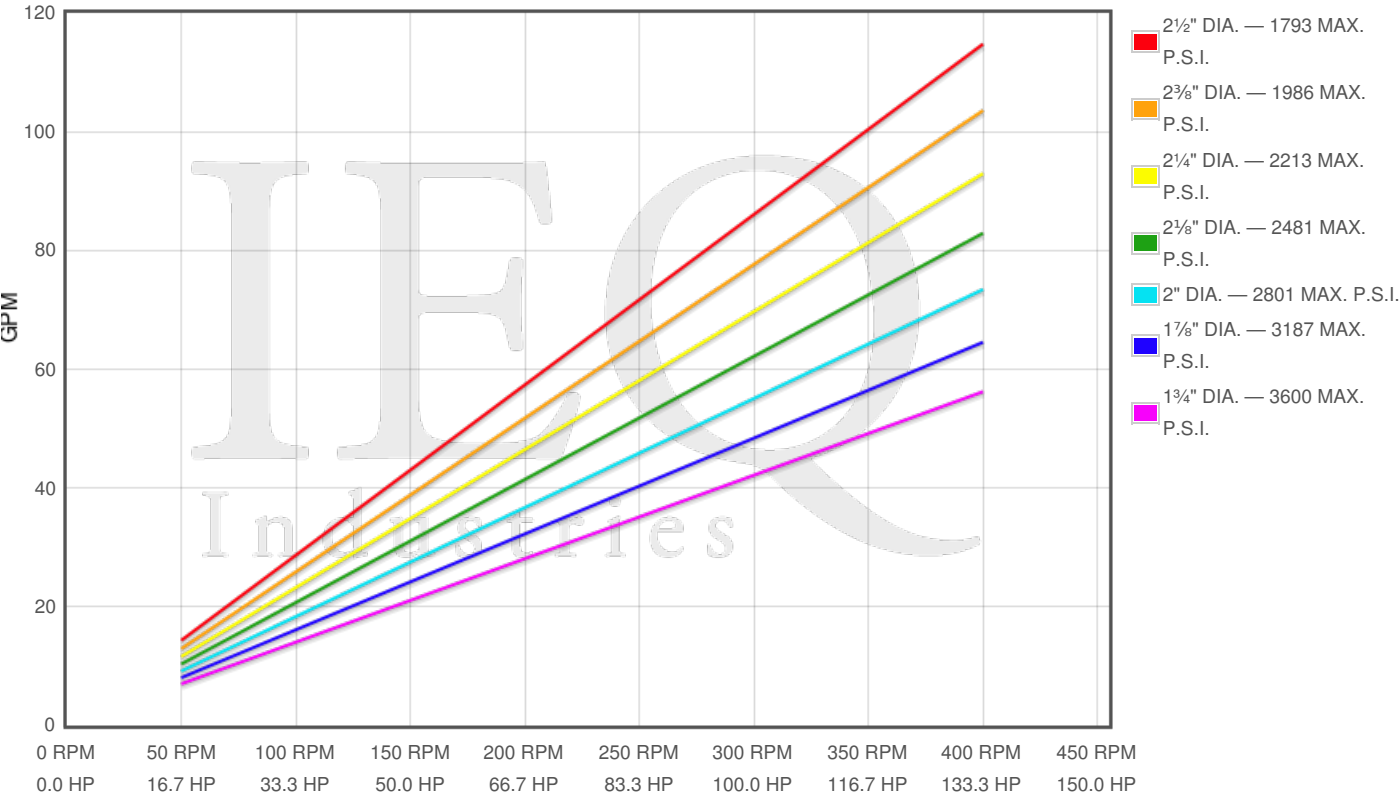
Specs

Spec	U.S. Standard
Type:	triplex
Minimum Plunger Diameter:	1 3/4"
Maximum Plunger Diameter:	2 1/2"
Stroke length:	4 1/2"
Maximum Working Pressure:	3,600 PSI
Rod/Piston Load:	8800lb
Gallons per Minute:	114.7
Barrels per Day:	3933
Brake Horse Power:	133.0



Pump Curves

Hover over Power Curves to reveal RPM and GPM



Performance Data Table

Pump	English Units					50 RPM		150 RPM		250 RPM		350 RPM		400 RPM	
	Plunger Dia. In.	Plunger Area Sq. In.	BPD per RPM	GPM per RPM	Max Press. PSI	BPD	GPM	BPD	GPM	BPD	GPM	BPD	GPM	BPD	GPM
T140-3 133T-4M	2.500	4.9087	9.836	0.2869	1793	492	14	1475	43	2459	72	3443	100	3934	115
	2.375	4.4301	8.877	0.2589	1986	444	13	1332	39	2219	65	3107	91	3551	104
	2.250	3.9761	7.967	0.2324	2213	398	12	1195	35	1992	58	2788	81	3187	93
	2.125	3.5466	7.106	0.2073	2481	355	10	1066	31	1777	52	2487	73	2843	83
	2.000	3.1416	6.295	0.1836	2801	315	9	944	28	1574	46	2203	64	2518	73
	1.875	2.7612	5.533	0.1614	3187	277	8	830	24	1383	40	1936	56	2213	65
	1.750	2.4053	4.819	0.1406	3600	241	7	723	21	1205	35	1687	49	1928	56

Features/Benefits

- Cast iron power frame

- Forged Steel Crankshaft
- Heavy-duty, tapered roller crankshaft bearings
- Precision type, aluminum alloy crankpin bearings
- Ductile iron connecting rods
- Minimum pump speed is 150 with standard power end construction
- Bronze bearing crosshead pin bushings
- Cast iron crossheads with upper/lower oil grooves
- Stainless steel extension rods
- Internal pressure lubrication
- Alloy steel crosshead pins
- Rated rod load is 8800 lbs.
- Plungers - Solid Ceramic, or Tungsten coated
- Spherical suction and discharge valves
- Valve Seat & Valve Body: Nitronic 50
- Spring: Inconel
- Cage: 316L Stainless Steel
- Severe duty valves with inserts available

Disclaimer I

This website is intended as a reference tool only. It has been constructed from published data that is based on manufacturer's sales and engineering documents that are either current, historical and obsolete. Much of the machinery data contained herein has been re-rated through the years with different engineering criteria which maybe in conflict with legacy data. Much of the content published here is calculated online with the use of dynamic data using formulas and extrapolations considered to be sound engineering formulas and are correct to the degree that the data used is accurate. We have done our best to be as precise as as possible in this posting but do not represent any of the calculations or performance data to be entirely accurate. The data published here is intended to be general information rather than actual and to serve as a reference rather than a technical absolute. The user of such data should confirm such information independently.

Copyright and Disclaimers

WheatleyGaso.com is your resource for Gaso pumps, Gaso pump parts and a supplier of ORIGINAL GASO PARTS and equipment, new used and remanufactured Wheatley, GASO and Wheatley/GASO plunger and piston pumps and pump parts and is not affiliated with Wheatley/GASO Inc. or its parent company, National Oilwell Varco, Copyright ©2024 IEQ Industries, a Gallagher Fluid Handling Company. All rights reserved, *Used under license from Intelleg Holdings, LLC.