

Gaso, T165-4, Triplex, Plunger Pump

Pumps in this series

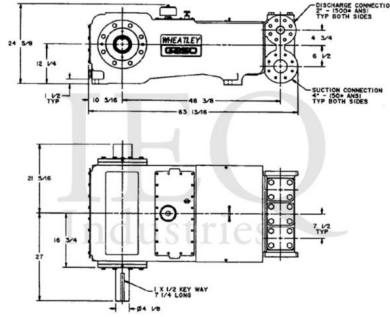
[T165-2](#)

[T165-3](#)

[T165-4](#)

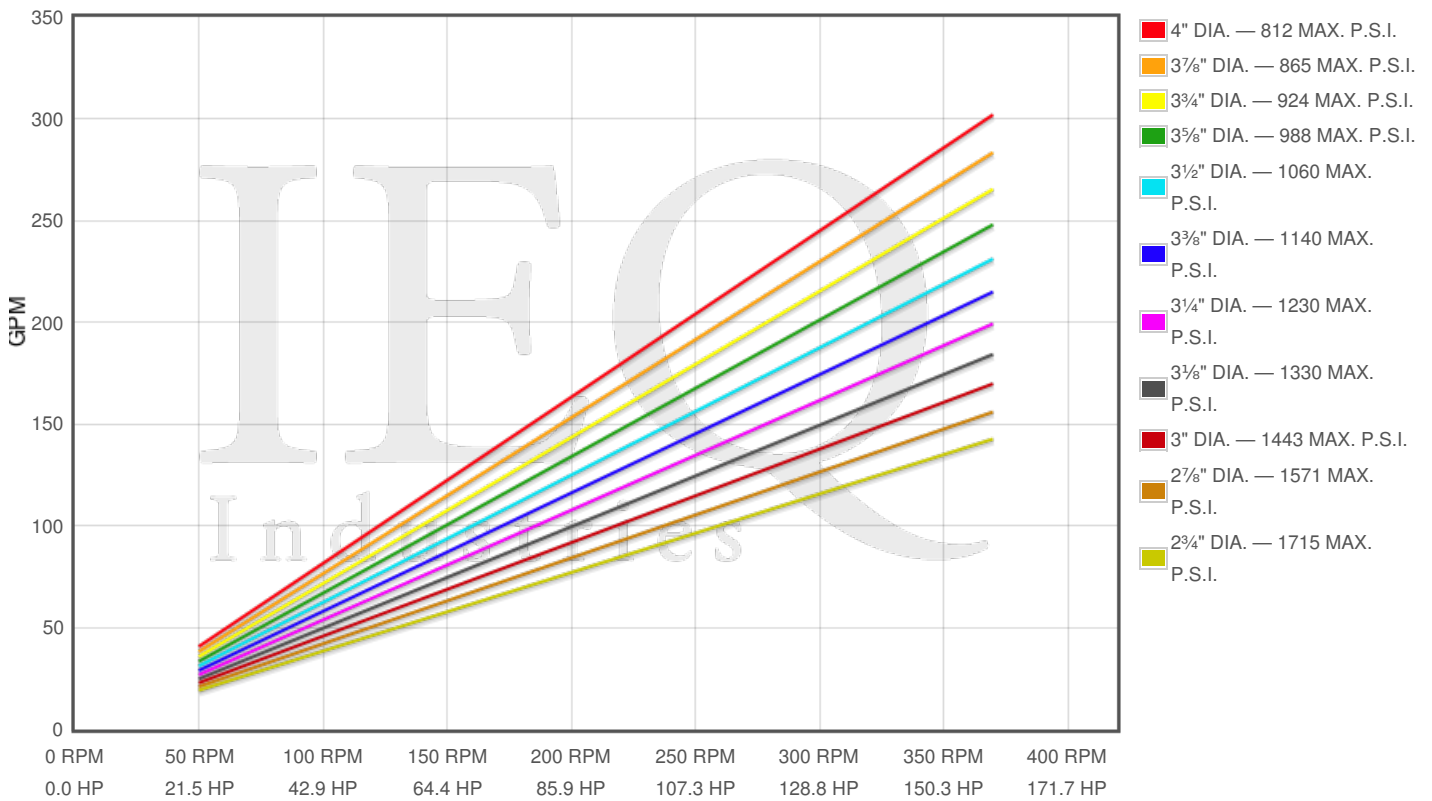
Specs

Spec	U.S. Standard
Type:	triplex
Minimum Plunger Diameter:	2 3/4"
Maximum Plunger Diameter:	4"
Stroke length:	5"
Maximum Working Pressure:	1,715 PSI
Rod/Piston Load:	10200lb
Gallons per Minute:	301.9
Barrels per Day:	10351
Brake Horse Power:	159.0



Pump Curves

Hover over Power Curves to reveal RPM and GPM



Performance Data Table

Pump	English Units					50 RPM		150 RPM		250 RPM		350 RPM		370 RPM	
	Plunger Dia. In.	Plunger Area Sq. In.	BPD per RPM	GPM per RPM	Max Press. PSI	BPD	GPM	BPD	GPM	BPD	GPM	BPD	GPM	BPD	GPM
T165-4	4.000	12.5664	27.977	0.8160	812	1399	41	4197	122	6994	204	9792	286	10352	302
	3.875	11.7932	26.256	0.7658	865	1313	38	3938	115	6564	191	9190	268	9715	283
	3.750	11.0447	24.589	0.7172	924	1230	36	3688	108	6147	179	8606	251	9098	265
	3.625	10.3206	22.977	0.6702	988	1149	34	3447	101	5744	168	8042	235	8502	248
	3.500	9.6211	21.420	0.6247	1060	1071	31	3213	94	5355	156	7497	219	7925	231
	3.375	8.9462	19.917	0.5809	1140	996	29	2988	87	4979	145	6971	203	7369	215
	3.250	8.2958	18.469	0.5387	1230	923	27	2770	81	4617	135	6464	189	6834	199
	3.125	7.6699	17.076	0.4980	1330	854	25	2561	75	4269	125	5977	174	6318	184
	3.000	7.0686	15.737	0.4590	1443	787	23	2361	69	3934	115	5508	161	5823	170
	2.875	6.4918	14.453	0.4215	1571	723	21	2168	63	3613	105	5059	148	5348	156
2.750	5.9396	13.224	0.3857	1715	661	19	1984	58	3306	96	4628	135	4893	143	

Disclaimer I

This website is intended as a reference tool only. It has been constructed from published data that is based on manufacturer's sales and engineering documents that are either current, historical and obsolete. Much of the machinery data contained herein has been re-rated through the years with different engineering criteria which maybe in conflict with legacy data. Much of the content published here is calculated online with the use of dynamic data using formulas and extrapolations considered to be sound engineering formulas and are correct to the degree that the data used is accurate. We have done our best to be as precise as as possible in this posting but do not represent any of the calculations or performance data to be entirely accurate. The data published here is intended to be general information rather than actual and to serve as a reference rather than a technical absolute. The user of such data should confirm such information independently.

Copyright and Disclaimers

WheatleyGas.com is your resource for Gaso pumps, Gaso pump parts and a supplier of ORIGINAL GASO PARTS and equipment, new used and remanufactured Wheatley, GASO and Wheatley/GASO plunger and piston pumps and pump parts and is not affiliated with Wheatley/GASO Inc. or its parent company, National Oilwell Varco, Copyright ©2024 IEQ Industries, a Gallagher Fluid Handling Company. All rights reserved, *Used under license from IntelleQ Holdings, LLC.