

Wheatley, T225-M (32T-2M), Triplex, Plunger Pump

Pumps in this series

- 32 horsepower 2 1/4" stroke horizontal triplex single acting plunger pump
- Available in four different fluid end materials
- Pump speeds up to 465 RPM

T225-H (22T-2H)

T225-H (32T-2H)

T225-LS (22T-2L)

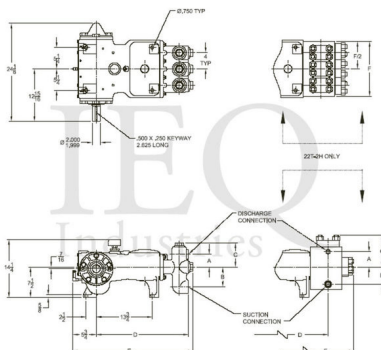
T225-LS (32T-2L)

T225-M (32T-2M)

T225-M (22T-2M)

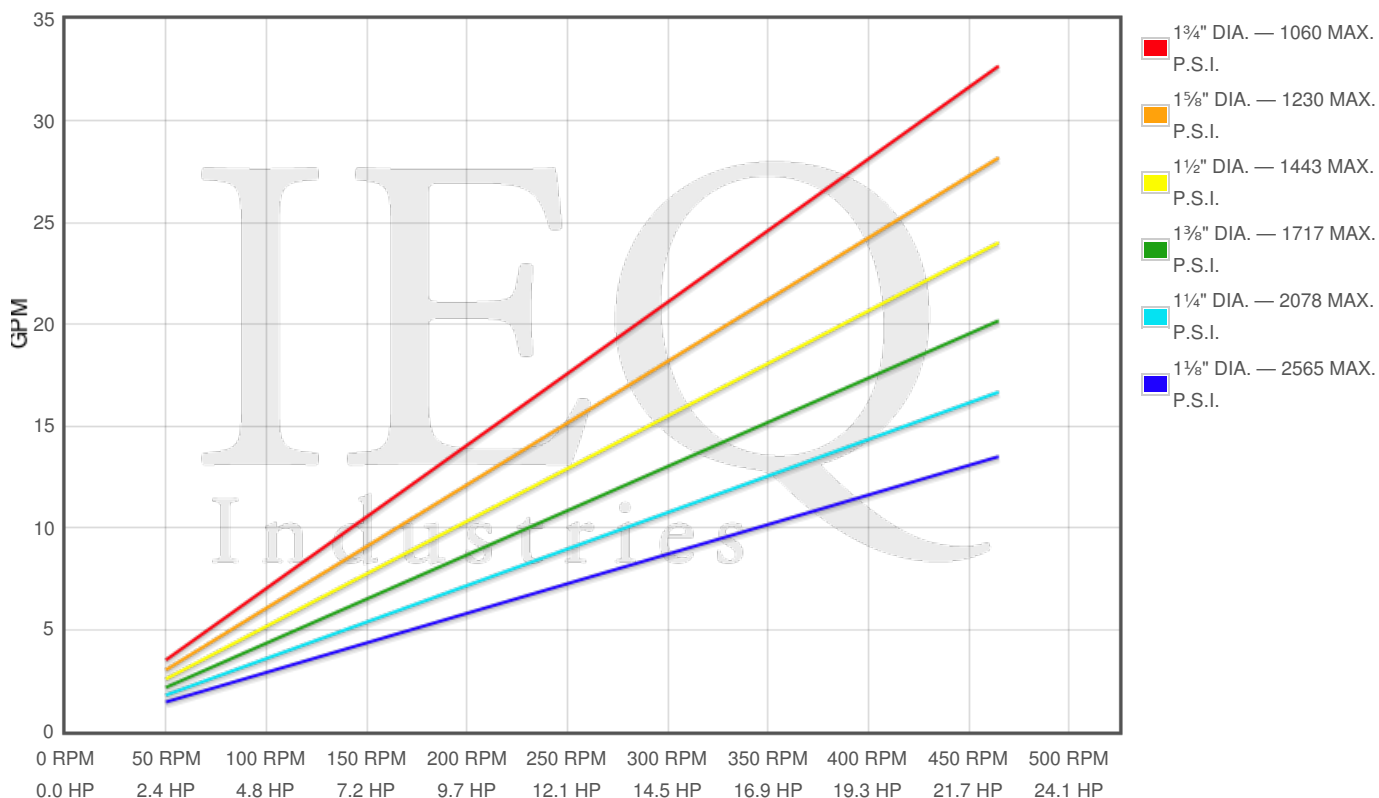
Specs

Spec	U.S. Standard
Type:	triplex
Minimum Plunger Diameter:	1½"
Maximum Plunger Diameter:	1¾"
Stroke length:	2¼"
Maximum Working Pressure:	2,565 PSI
Rod/Piston Load:	2550lb
Gallons per Minute:	32.7
Barrels per Day:	1121
Brake Horse Power:	32.0



Pump Curves

Hover over Power Curves to reveal RPM and GPM



Performance Data Table

Pump	English Units					50 RPM		200 RPM		350 RPM		465 RPM	
	Plunger Dia. In.	Plunger Area Sq. In.	BPD per RPM	GPM per RPM	Max Press. PSI	BPD	GPM	BPD	GPM	BPD	GPM	BPD	GPM
T225-M 32T-2M	1.750	2.4053	2.410	0.0703	1060	120	4	482	14	843	25	1121	33
	1.625	2.0739	2.078	0.0606	1230	104	3	416	12	727	21	966	28
	1.500	1.7671	1.770	0.0516	1443	89	3	354	10	620	18	823	24
	1.375	1.4849	1.488	0.0434	1717	74	2	298	9	521	15	692	20
	1.250	1.2272	1.229	0.0359	2078	61	2	246	7	430	13	572	17
	1.125	0.9940	0.996	0.0290	2565	50	1	199	6	349	10	463	14

Features/Benefits

Power End Features:

- Cast iron power frame
- Heavy-duty roller crankshaft bearings
- Precision type, aluminum alloy crankpin bearings
- Cast iron connecting rods
- Alloy steel crosshead pins
- Alloy steel crankshaft with ground journals and polished throws
- Bronze bearing crosshead pin bushings
- Cast iron crossheads with upper/lower oil grooves
- One piece plungers
- Flooded sump, splash distribution lubrication
- Rated rod load is 3600 lbs

Fluid End Features:

- Threaded type glands and integral stuffing boxes
- Plungers - Ceramic or Tungsten Carbide coated

Disclaimer I

This website is intended as a reference tool only. It has been constructed from published data that is based on manufacturer's sales and engineering documents that are either current, historical and obsolete. Much of the machinery data contained herein has been re-rated through the years with different engineering criteria which maybe in conflict with legacy data. Much of the content published here is calculated online with the use of dynamic data using formulas and extrapolations considered to be sound engineering formulas and are correct to the degree that the data used is accurate. We have done our best to be as precise as as possible in this posting but do not represent any of the calculations or performance data to be entirely accurate. The data published here is intended to be general information rather than actual and to serve as a reference rather than a technical absolute. The user of such data should confirm such information independently.

Copyright and Disclaimers

WheatleyGas.com is your resource for Gaso pumps, Gaso pump parts and a supplier of ORIGINAL GASO PARTS and equipment, new used and remanufactured Wheatley, GASO and Wheatley/GASO plunger and piston pumps and pump parts and is not affiliated with Wheatley/GASO Inc. or its parent company, National Oilwell Varco, Copyright ©2024 IEQ Industries, a Gallagher Fluid Handling Company. All rights reserved, *Used under license from IntelleQ Holdings, LLC.