

## Wheatley, T365-AM (59T-3M), Triplex, Plunger Pump

### Pumps in this series

[T365-AL \(59T-3L\)](#)

[T365-AM \(59T-3M\)](#)

[T365-H \(59T-3H\)](#)

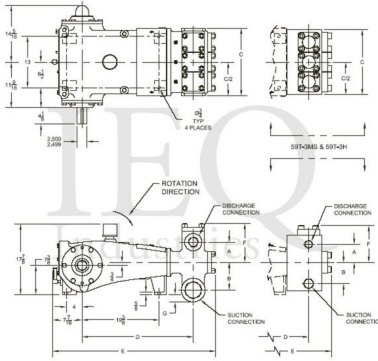
[T365-L](#)

[T365-MS \(59T-3MS\)](#)

- 59 horsepower 3 1/2" stroke horizontal triplex single acting plunger pump
- Available in four different fluid end materials
- Pump speeds up to 420 RPM
- Multiple accessory gear reduction unit ratios

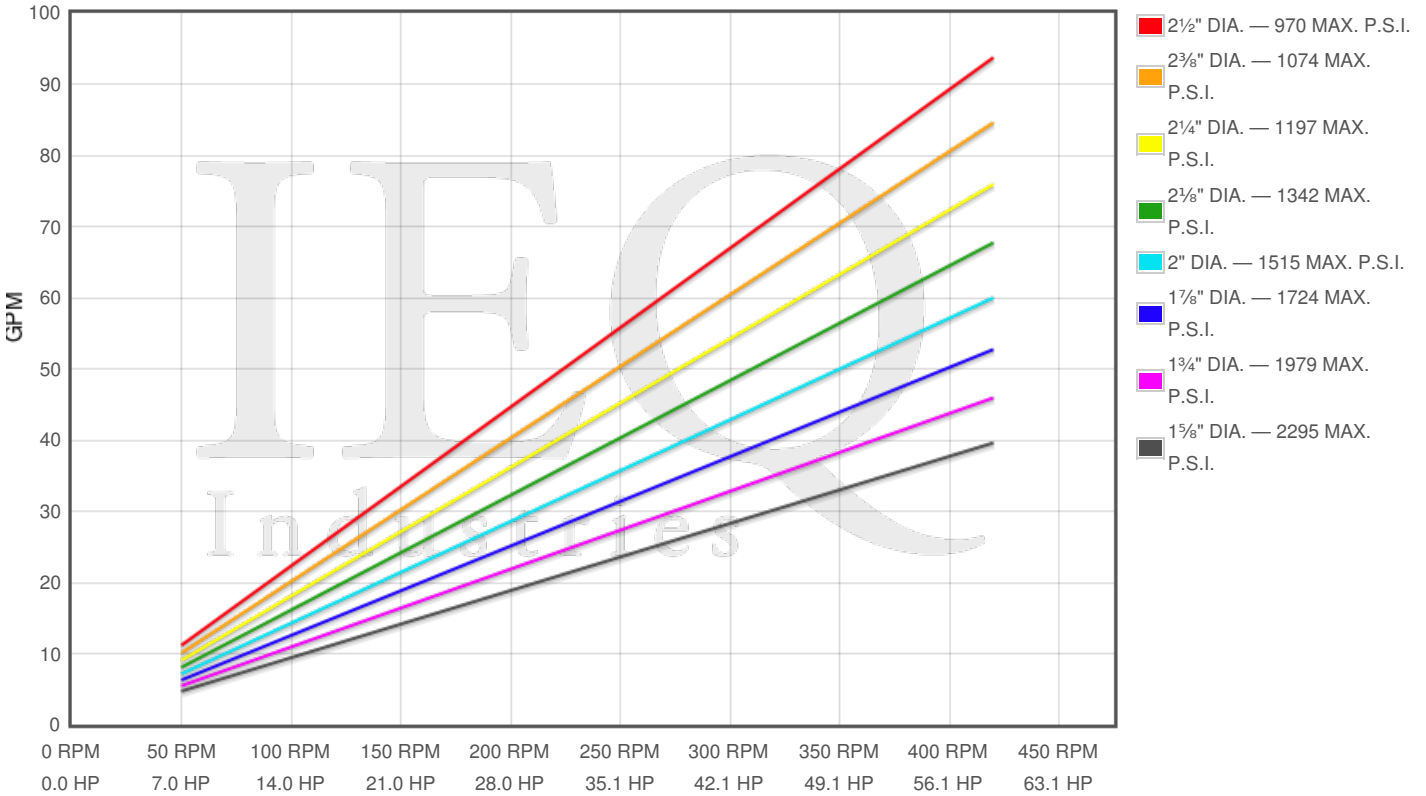
### Specs

Spec	U.S. Standard
Type:	triplex
Minimum Plunger Diameter:	1 5/8"
Maximum Plunger Diameter:	2 1/2"
Stroke length:	3 1/2"
Maximum Working Pressure:	2,295 PSI
Rod/Piston Load:	4760lb
Gallons per Minute:	93.71
Barrels per Day:	3213
Brake Horse Power:	59.0



### Pump Curves

Hover over Power Curves to reveal RPM and GPM



### Performance Data Table

Pump	English Units					50 RPM		150 RPM		250 RPM		350 RPM		420 RPM	
	Plunger Dia. In.	Plunger Area Sq. In.	BPD per RPM	GPM per RPM	Max Press. PSI	BPD	GPM	BPD	GPM	BPD	GPM	BPD	GPM	BPD	GPM
T365-AM 59T-3M	2.500	4.9087	7.650	0.2231	970	382	11	1148	33	1913	56	2678	78	3213	94
	2.375	4.4301	6.904	0.2014	1074	345	10	1036	30	1726	50	2416	70	2900	85
	2.250	3.9761	6.196	0.1807	1197	310	9	929	27	1549	45	2169	63	2603	76
	2.125	3.5466	5.527	0.1612	1342	276	8	829	24	1382	40	1935	56	2321	68
	2.000	3.1416	4.896	0.1428	1515	245	7	734	21	1224	36	1714	50	2056	60
	1.875	2.7612	4.303	0.1255	1724	215	6	645	19	1076	31	1506	44	1807	53
	1.750	2.4053	3.748	0.1093	1979	187	5	562	16	937	27	1312	38	1574	46
	1.625	2.0739	3.232	0.0943	2295	162	5	485	14	808	24	1131	33	1358	40

## Features/Benefits

---

- Cast iron power frame
- Ductile Iron Crankshaft
- Heavy-duty roller crankshaft bearings
- Bi-Metal crankpin bearings
- Alloy steel crosshead pins
- Bronze bearing crosshead pin bushings
- Cast iron crossheads with upper/lower oil grooves

## Disclaimer I

---

This website is intended as a reference tool only. It has been constructed from published data that is based on manufacturer's sales and engineering documents that are either current, historical and obsolete. Much of the machinery data contained herein has been re-rated through the years with different engineering criteria which maybe in conflict with legacy data. Much of the content published here is calculated online with the use of dynamic data using formulas and extrapolations considered to be sound engineering formulas and are correct to the degree that the data used is accurate. We have done our best to be as precise as as possible in this posting but do not represent any of the calculations or performance data to be entirely accurate. The data published here is intended to be general information rather than actual and to serve as a reference rather than a technical absolute. The user of such data should confirm such information independently.

---

### Copyright and Disclaimers

WheatleyGas.com is your resource for Gaso pumps, Gaso pump parts and a supplier of ORIGINAL GASO PARTS and equipment, new used and remanufactured Wheatley, GASO and Wheatley/GASO plunger and piston pumps and pump parts and is not affiliated with Wheatley/GASO Inc. or its parent company, National Oilwell Varco, Copyright ©2024 IEQ Industries, a Gallagher Fluid Handling Company. All rights reserved, \*Used under license from IntelleQ Holdings, LLC.