

Gaso, 1847-A, Duplex, Piston Pump (Mud Pump)

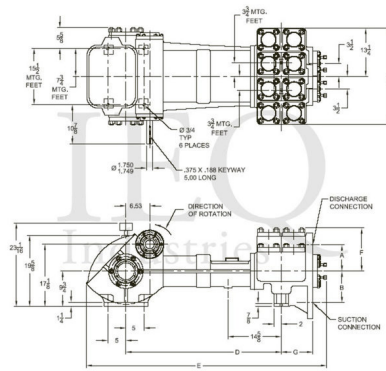
Pumps in this series

1847-A

- 33 horsepower 6" stroke continuous duty double acting duplex pump
- Rated at pump speeds up to 100 RPM
- Maximum discharge pressures up to 990 psi
- Equipped with cast iron or cast steel fluid ends
- Equipped with internal gear reduction unit

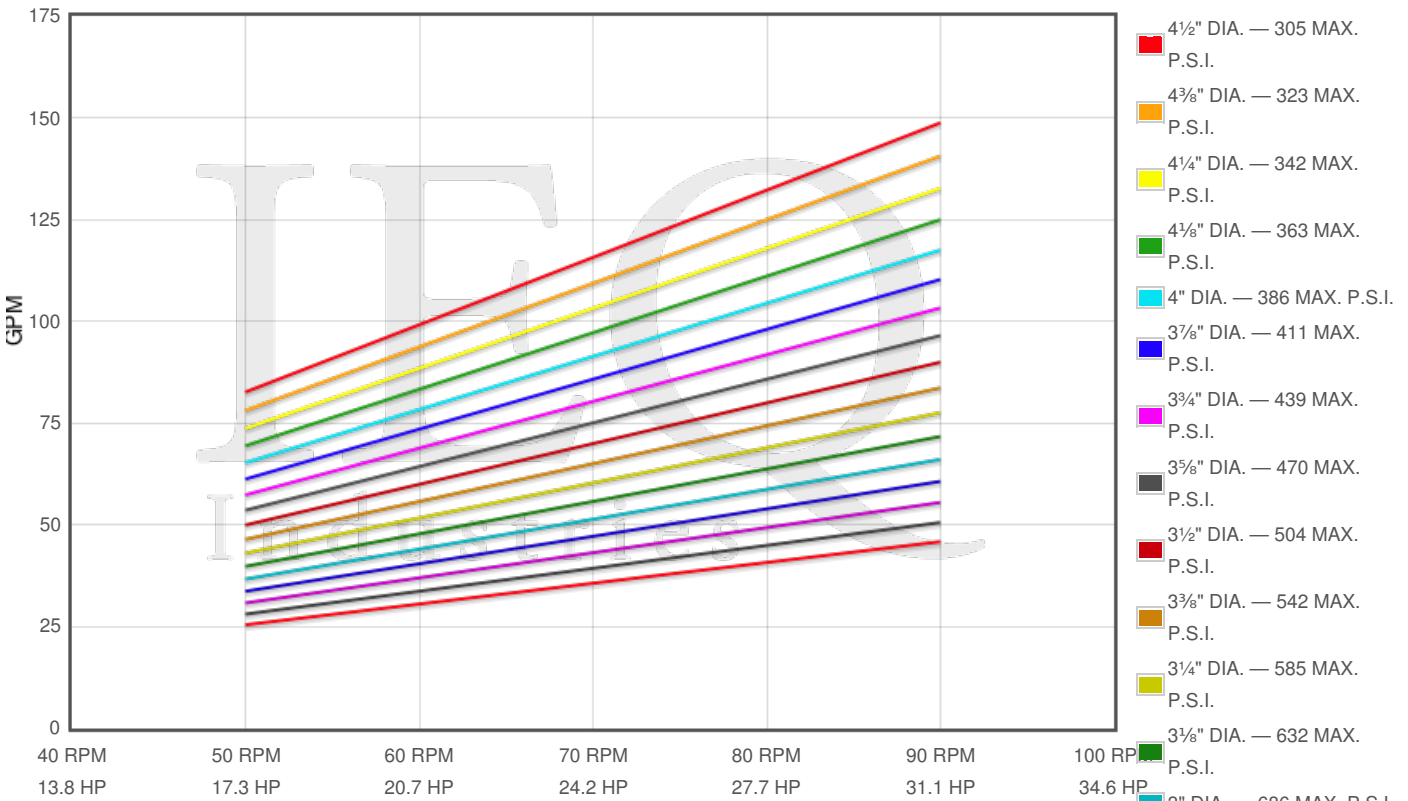
Specs

Spec	U.S. Standard
Type:	duplex
Minimum Piston Diameter:	2½"
Maximum Piston Diameter:	4½"
Stroke length:	6"
Maximum Working Pressure:	990 PSI
Rod/Piston Load:	4850lb
Gallons per Minute:	160.0
Barrels per Day:	5486
Brake Horse Power:	31.0



Pump Curves

Hover over Power Curves to reveal RPM and GPM



Performance Data Table

Pump	English Units					50 RPM		60 RPM		70 RPM		80 RPM		90 RPM	
	Plunger Dia. In.	Plunger Area Sq. In.	BPD per RPM	GPM per RPM	Max Press. PSI	BPD	GPM	BPD	GPM	BPD	GPM	BPD	GPM	BPD	GPM
1847-A	4.500	15.9043	56.654	1.6524	305	2833	83	3399	99	3966	116	4532	132	5099	149
	4.250	14.1863	50.534	1.4739	342	2527	74	3032	88	3537	103	4043	110	4548	133
	4.000	12.5664	44.763	1.3056	386	2238	65	2686	78	3133	91	3581	104	4029	118
	3.750	11.0447	39.343	1.1475	439	1967	57	2361	69	2754	80	3147	92	3541	103
	3.500	9.6211	34.272	0.9996	504	1714	50	2056	60	2399	70	2742	80	3085	90
	3.250	8.2958	29.551	0.8619	585	1478	43	1773	52	2069	60	2364	69	2660	78
	3.000	7.0686	25.179	0.7344	686	1259	37	1511	44	1763	51	2014	59	2266	66
	2.750	5.9396	21.158	0.6171	817	1058	31	1270	37	1481	43	1693	49	1904	56
	2.500	4.9087	17.486	0.5100	988	874	25	1049	31	1224	36	1399	41	1574	46

Features/Benefits

Power End Features

- Cast iron power frame
- Ductile iron crankshaft
- Heavy-duty roller crankshaft bearings
- Bi-metal crankpin bearings
- Ductile iron connecting rods
- Alloy steel crosshead pins
- Bronze bearing crosshead pin bushings
- Internal gear reduction / 5.100:1 Ratio / with
 - Ductile iron herringbone type main gear
 - Alloy steel pinion shaft with herringbone pinion gear
 - Heavy-duty roller pinion shaft bearings
- Flooded sump, splash distribution lubrication
- Rated rod load is 4850 lbs
- Cast iron crossheads with upper/lower oil grooves

Fluid End Features

- Bolted Valve and Cylinder Head Covers
- Bolted valve and cylinder head covers
- Bolted or threaded type glands and removable stuffing boxes
- File hard steel piston rods
- Standard valve types
 - For crude oil transfer:
 - Steel wing guided valve and seat
 - For slush/mud service:
 - Steel wing guided with replaceable insert
- Standard Piston Types
 - For crude oil transfer:
 - Cast iron piston body, ring type
 - Cast iron, chrome faced, piston rings
 - For slush/mud service:
 - Mission slush type piston w/ replaceable rubbers
- General service piston rod packing

Disclaimer I

This website is intended as a reference tool only. It has been constructed from published data that is based on manufacturer's sales and engineering documents that are either current, historical and obsolete. Much of the machinery data contained herein has been re-rated through the years with different engineering criteria which may be in conflict with legacy data. Much of the content published here is calculated online with the use of dynamic data using formulas and extrapolations considered to be sound engineering formulas and are correct to the degree that the data used is accurate. We have done our best to be as precise as as possible in this posting but do not represent any of the calculations or performance data to be entirely accurate. The data published here is intended to be general information rather than actual and to serve as a reference rather than a technical absolute. The user of such data should confirm such information independently.

Copyright and Disclaimers

WheatleyGas.com is your resource for Gaso pumps, Gaso pump parts and a supplier of ORIGINAL GASO PARTS and equipment, new used and remanufactured Wheatley, GASO and Wheatley/GASO plunger and piston pumps and pump parts and is not affiliated with Wheatley/GASO Inc. or its parent company, National Oilwell Varco, Copyright ©2024 IEQ Industries, a Gallagher Fluid Handling Company. All rights reserved, *Used under license from IntelleQ Holdings, LLC.