

Gaso, 2652, Duplex, Piston Pump (Mud Pump)

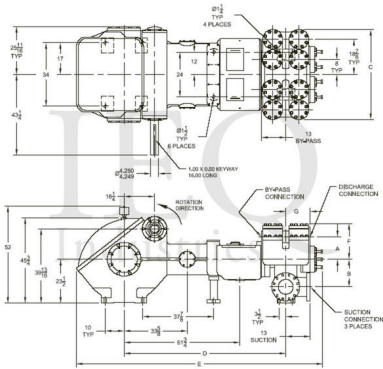
Pumps in this series

- 2651

2652
- 258 horsepower! 12" stroke continuous duty double acting duplex pump
  - Rated at pump speeds up to 85 RPM
  - Maximum discharge pressures up to 1,125 psi
  - Equipped with cast steel fluid end
  - Equipped with internal gear reduction unit

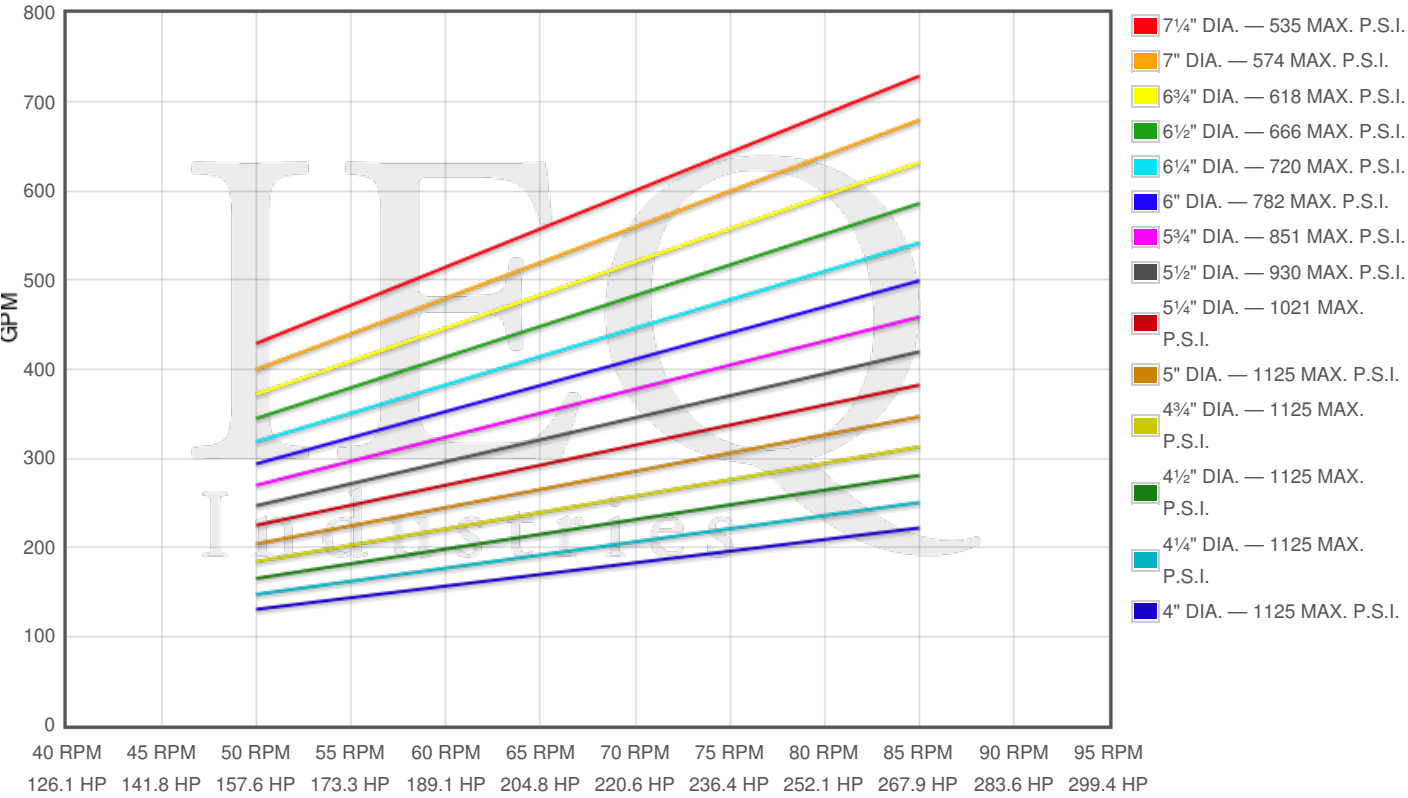
Specs

Spec	U.S. Standard
Type:	duplex
Minimum Piston Diameter:	4"
Maximum Piston Diameter:	7¼"
Stroke length:	12"
Maximum Working Pressure:	1,125 PSI
Rod/Piston Load:	22100lb
Gallons per Minute:	702.0
Barrels per Day:	24069
Brake Horse Power:	243.6



Pump Curves

Hover over Power Curves to reveal RPM and GPM



Performance Data Table

Pump	English Units					50 RPM		60 RPM		70 RPM		80 RPM		85 RPM	
	Plunger Dia. In.	Plunger Area Sq. In.	BPD per RPM	GPM per RPM	Max Press. PSI	BPD	GPM	BPD	GPM	BPD	GPM	BPD	GPM	BPD	GPM
2652	7.250	41.2825	294.109	8.5782	535	14705	429	17647	515	20588	600	23529	686	24999	729
	7.000	38.4845	274.175	7.9968	574	13709	400	16451	480	19192	560	21934	640	23305	680
	6.500	33.1831	236.406	6.8952	666	11820	345	14184	414	16548	483	18913	552	20095	586
	6.000	28.2743	201.435	5.8752	782	10072	294	12086	353	14100	411	16115	470	17122	499
	5.500	23.7583	169.261	4.9368	930	8463	247	10156	296	11848	346	13541	395	14387	420
	5.000	19.6350	139.885	4.0800	1125	6994	204	8393	245	9792	286	11191	326	11890	347
	4.500	15.9043	113.307	3.3048	1125	5665	165	6798	198	7932	231	9065	264	9631	281
	4.000	12.5664	89.527	2.6112	1125	4476	131	5372	157	6267	183	7162	209	7610	222

Features/Benefits

Power End Features:

- Cast iron power frame
- Steel crankshaft
- Bi-metal crankpin bearings
- Ductile iron connecting rods
- Heavy-duty roller crankshaft bearings
- Alloy steel crosshead pins
- Bronze bearing crosshead pin bushings
- Internal gear reduction / 5.05:1/Ratio/ with:
  - Ductile iron herringbone type main gear
  - Allow steel pinion shaft with herringbone pinion gear
- Heavy-duty roller pinion shaft bearings
- Flooded sump, splash distribution and lubrication
- Cast iron crossheads with upper/lower oil grooves
- Rated rod load is 22100 lbs.

Fluid End Features:

- Bolted Valve and Cylinder head covers
- Bolted or threaded type glands & removable stuffing boxes
- File hard steel piston rods
- Standard valve types
  - For crude oil transfer:
    - Steel wing guided valve & seat
  - For slush / mud service:
    - Steel wing guided with replaceable insert
- Standard Valve Types:
  - For crude oil transfer:
    - Cast iron piston body, ring type
    - Cast iron, chrome faced, piston rings
  - For slush / mud service:
    - Mission slush type piston w/ replaceable rubbers
- General service piston rod packing

Disclaimer I

This website is intended as a reference tool only. It has been constructed from published data that is based on manufacturer’s sales and engineering documents that are either current, historical and obsolete. Much of the machinery data contained herein has been re-rated through the years with different engineering criteria which maybe in conflict with legacy data. Much of the content published here is calculated online with the use of dynamic data using formulas and extrapolations considered to be sound engineering formulas and are correct to the degree that the data used is accurate. We have done our best to be as precise as as possible in this posting but do not represent any of the calculations or performance data to be entirely accurate. The data published here is intended to be general information rather than actual and to serve as a reference rather than a technical absolute. The user of such data should confirm such information independently.