

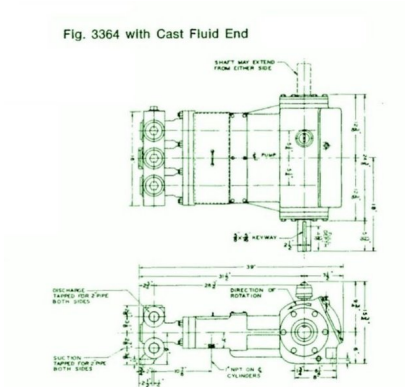
Gaso, 3364-F, Triplex, Plunger Pump

Pumps in this series

- 3364-1 (55T-3H)
- 3364-2 (55T-3MS)
- 3364-3 (55T-3M)
- 3364-4
- 3364-5
- 3364-5SC (55T-3SC)
- 3364-6 (55T-3LS)
- 3364-7 (55T-3L)
- 3364-F

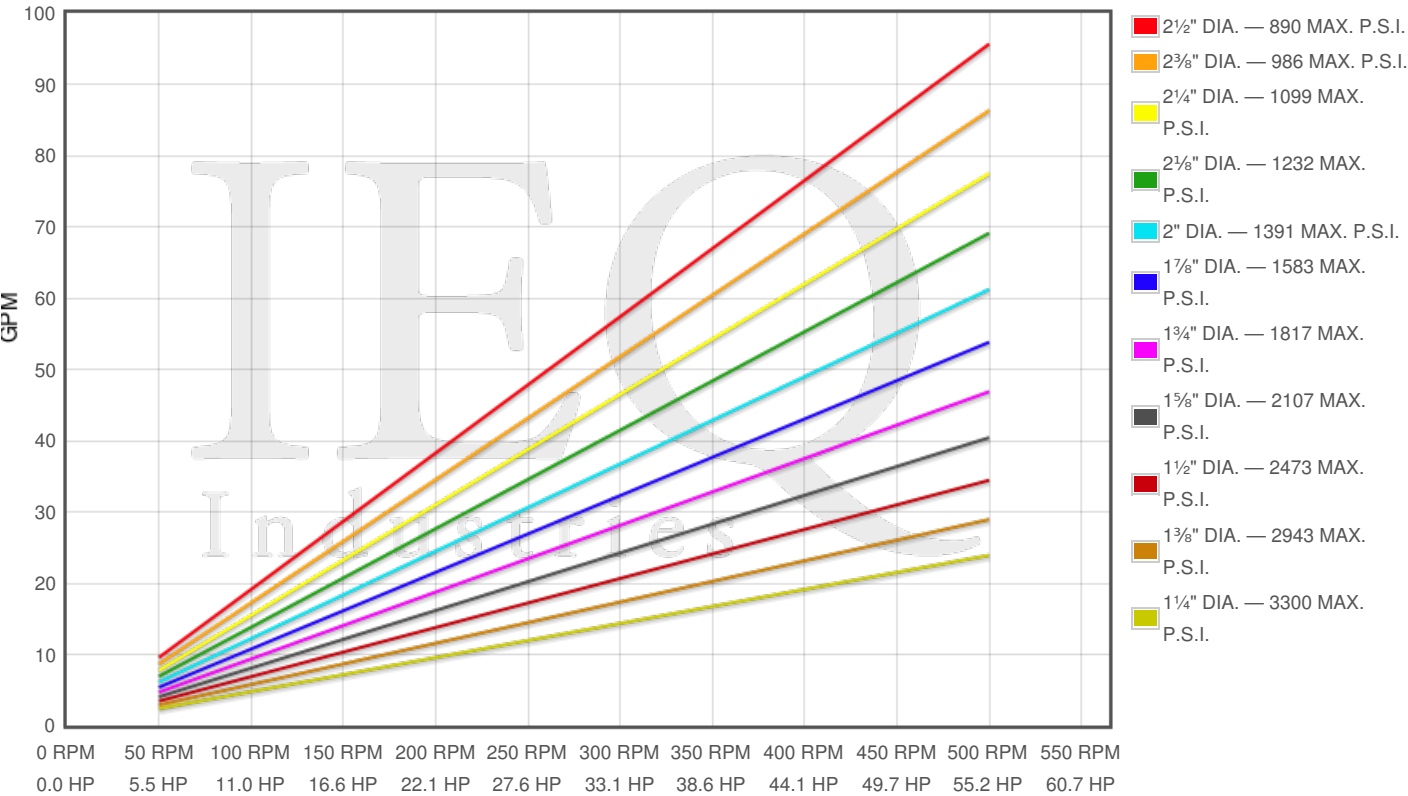
Specs

Spec	U.S. Standard
Type:	triplex
Minimum Plunger Diameter:	1¼"
Maximum Plunger Diameter:	2½"
Stroke length:	3"
Maximum Working Pressure:	3,300 PSI
Rod/Piston Load:	4370lb
Gallons per Minute:	95.6
Barrels per Day:	3278
Brake Horse Power:	55.2



Pump Curves

Hover over Power Curves to reveal RPM and GPM



Performance Data Table

Pump	English Units					50 RPM		200 RPM		350 RPM		500 RPM	
	Plunger Dia. In.	Plunger Area Sq. In.	BPD per RPM	GPM per RPM	Max Press. PSI	BPD	GPM	BPD	GPM	BPD	GPM	BPD	GPM
3364-F	2.500	4.9087	6.557	0.1912	890	328	10	1311	38	2295	67	3279	96
	2.375	4.4301	5.918	0.1726	986	296	9	1184	35	2071	60	2959	86
	2.250	3.9761	5.311	0.1549	1099	266	8	1062	31	1859	54	2656	77
	2.125	3.5466	4.738	0.1382	1232	237	7	948	28	1658	48	2369	69
	2.000	3.1416	4.197	0.1224	1391	210	6	839	24	1469	43	2098	61
	1.875	2.7612	3.688	0.1076	1583	184	5	738	22	1291	38	1844	54
	1.750	2.4053	3.213	0.0937	1817	161	5	643	19	1125	33	1607	47
	1.625	2.0739	2.770	0.0808	2107	139	4	554	16	970	28	1385	40
	1.500	1.7671	2.361	0.0688	2473	118	3	472	14	826	24	1180	34
	1.375	1.4849	1.984	0.0579	2943	99	3	397	12	694	20	992	29
	1.250	1.2272	1.639	0.0478	3300	82	2	328	10	574	17	820	24

Features/Benefits

- Cast iron power frame
- Heavy-duty roller crankshaft bearings
- Cast iron crossheads with upper/lower oil grooves
- Stainless steel extension rods
- Precision type crankpin bearings
- Ductile iron connecting rods
- Alloy steel crosshead pins
- Bronze bearing crosshead pin bushings
- Flooded sump, splash distribution lubrication
- Rated rod load is 4370 lbs.

Disclaimer I

This website is intended as a reference tool only. It has been constructed from published data that is based on manufacturer's sales and engineering documents that are either current, historical and obsolete. Much of the machinery data contained herein has been re-rated through the years with different engineering criteria which maybe in conflict with legacy data. Much of the content published here is calculated online with the use of dynamic data using formulas and extrapolations considered to be sound engineering formulas and are correct to the degree that the data used is accurate. We have done our best to be as precise as as possible in this posting but do not represent any of the calculations or performance data to be entirely accurate. The data published here is intended to be general information rather than actual and to serve as a reference rather than a technical absolute. The user of such data should confirm such information independently.