

Gaso, 5885, Quintuplex, Plunger Pump

Pumps in this series

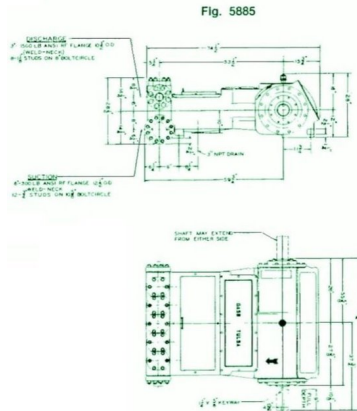
[5884](#)

[5885](#)

[5886](#)

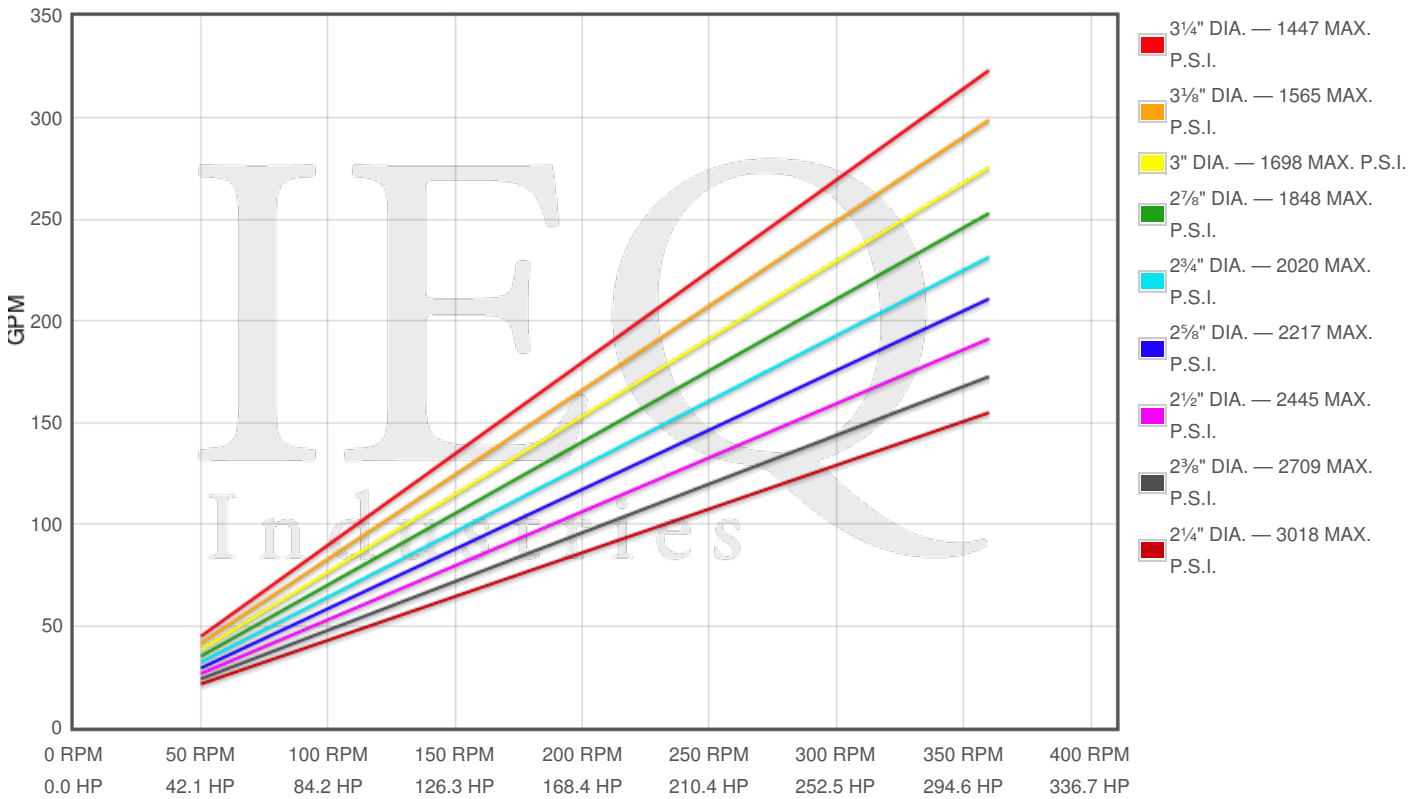
Specs

Spec	U.S. Standard
Type:	quintuplex
Minimum Plunger Diameter:	2¼"
Maximum Plunger Diameter:	3¼"
Stroke length:	5"
Maximum Working Pressure:	3,020 PSI
Rod/Piston Load:	12000lb
Gallons per Minute:	323.2
Barrels per Day:	11081
Brake Horse Power:	300.0



Pump Curves

Hover over Power Curves to reveal RPM and GPM



Performance Data Table

Pump	English Units					50 RPM		150 RPM		250 RPM		350 RPM		360 RPM	
	Plunger Dia. In.	Plunger Area Sq. In.	BPD per RPM	GPM per RPM	Max Press. PSI	BPD	GPM	BPD	GPM	BPD	GPM	BPD	GPM	BPD	GPM
5885	3.250	8.2958	30.782	0.8978	1447	1539	45	4617	135	7696	224	10774	314	11082	323
	3.125	7.6699	28.460	0.8301	1565	1423	42	4269	125	7115	208	9961	291	10246	299
	3.000	7.0686	26.229	0.7650	1698	1311	38	3934	115	6557	191	9180	268	9442	275
	2.875	6.4918	24.088	0.7026	1848	1204	35	3613	105	6022	176	8431	246	8672	253
	2.750	5.9396	22.039	0.6428	2020	1102	32	3306	96	5510	161	7714	225	7934	231
	2.625	5.4119	20.081	0.5857	2217	1004	29	3012	88	5020	146	7028	205	7229	211
	2.500	4.9087	18.214	0.5312	2445	911	27	2732	80	4554	133	6375	186	6557	191
	2.375	4.4301	16.438	0.4795	2709	822	24	2466	72	4110	120	5753	168	5918	173
	2.250	3.9761	14.754	0.4303	3018	738	22	2213	65	3688	108	5164	151	5311	155

Features/Benefits

GASO PLUNGER PUMPS

Ratings published here in are intended to be used only for preliminary planning purposes, and as such carried no warranties whatsoever. All applications for gas opines must be approved in writing. THE INFORMATION CONTAINED HERE IS TRANSCRIBED FROM A GASO TECHNICAL MANUAL FROMM THE 1960s - 70s. IEQ INDUSTRIES OR THE CUSTODIANS OF THIS WEBSITE ARE NOT RESPONSIBLE FOR ITS CONTENT.

GASO pumps are engineered to deliver the book plus values which have distinguished GASO pumps for over 60 years and to provide longer life and lower maintenance costs. Important design features include:

Power End Specifications

Power Frame. High-strength gray iron alloy casting with heavy wall sections well written to ensure rigid construction.

Crankshaft. Mounted with centerline of shaft on centerline of cross heads. Crankshaft may extend from either side of the pump.

Crankshaft Bearings. Interchangeable heavy-duty roller bearings.

Connecting Rods. Connecting rods have renewable Babbit lined steel backed shell bearings at the crank end and bronze bushings at crosshead end.

Crossheads. Cross head tends are hardened and ground steel.

Lubrication. All power and parts are lubricated by splash system from oil in the crankcase reservoir. Power frame has an oil return channel, from front of the cross heads back to the crankcase, to permit constant circulation of oil and to help keep oil cool.

Fluid End Specifications

FLUID END BODY. Alloys which are stocked our Molybnum alloy iron for crude oil and freshwater service, and steel for pumping petroleum products in hazardous locations. Aluminum bronze alloys are used for salt water and other corrosive liquids. Special alloys such as Hastalloy C, Inconel or stainless steel can be furnished upon request.

PLUNGERS. Plunger materials are available in: file hard steel, colmonoy's surfaced steel, solid ceramic, and chrome plated steel.

PACKING. Standard packing is a set of non-crushable lid tight packing rings. Other packing can be furnished for special applications.

PILUNGER LUBRICATION. Furnished by use of grip oilers or regulated flow of oil from a force-feed's lubricator. Lubricate or is mounted on the pump with separate oil lines to each plunger.

Disclaimer I

This website is intended as a reference tool only. It has been constructed from published data that is based on manufacturer's sales and engineering documents that are either current, historical and obsolete. Much of the machinery data contained herein has been re-rated through the years with different engineering criteria which maybe in conflict with legacy data. Much of the content published here is calculated online with the use of dynamic data using formulas and extrapolations considered to be sound engineering formulas and are correct to the degree that the data used is accurate. We have done our best to be as precise as as possible in this posting but do not represent any of the calculations or performance data to be entirely accurate. The data published here is intended to be general information rather than actual and to serve as a reference rather than a technical absolute. The user of such data should confirm such information independently.

Copyright and Disclaimers

WheatleyGas.com is your resource for Gaso pumps, Gaso pump parts and a supplier of ORIGINAL GASO PARTS and equipment, new used and remanufactured Wheatley, GASO and Wheatley/GASO plunger and piston pumps and pump parts and is not affiliated with Wheatley/GASO Inc. or its parent company, National Oilwell Varco, p Copyright ©2017, IntelIQ Holdings, LLC. All rights reserved, *Used under license from IntelIQ Holdings, LLC.