

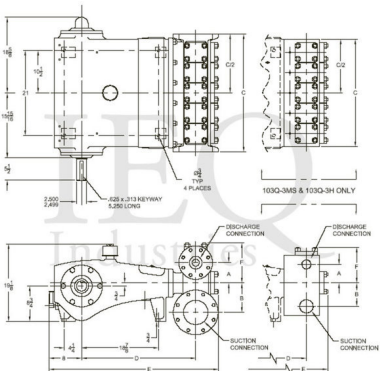
Wheatley, 5P-323, Quintuplex, Plunger Pump

Pumps in this series

5P-323

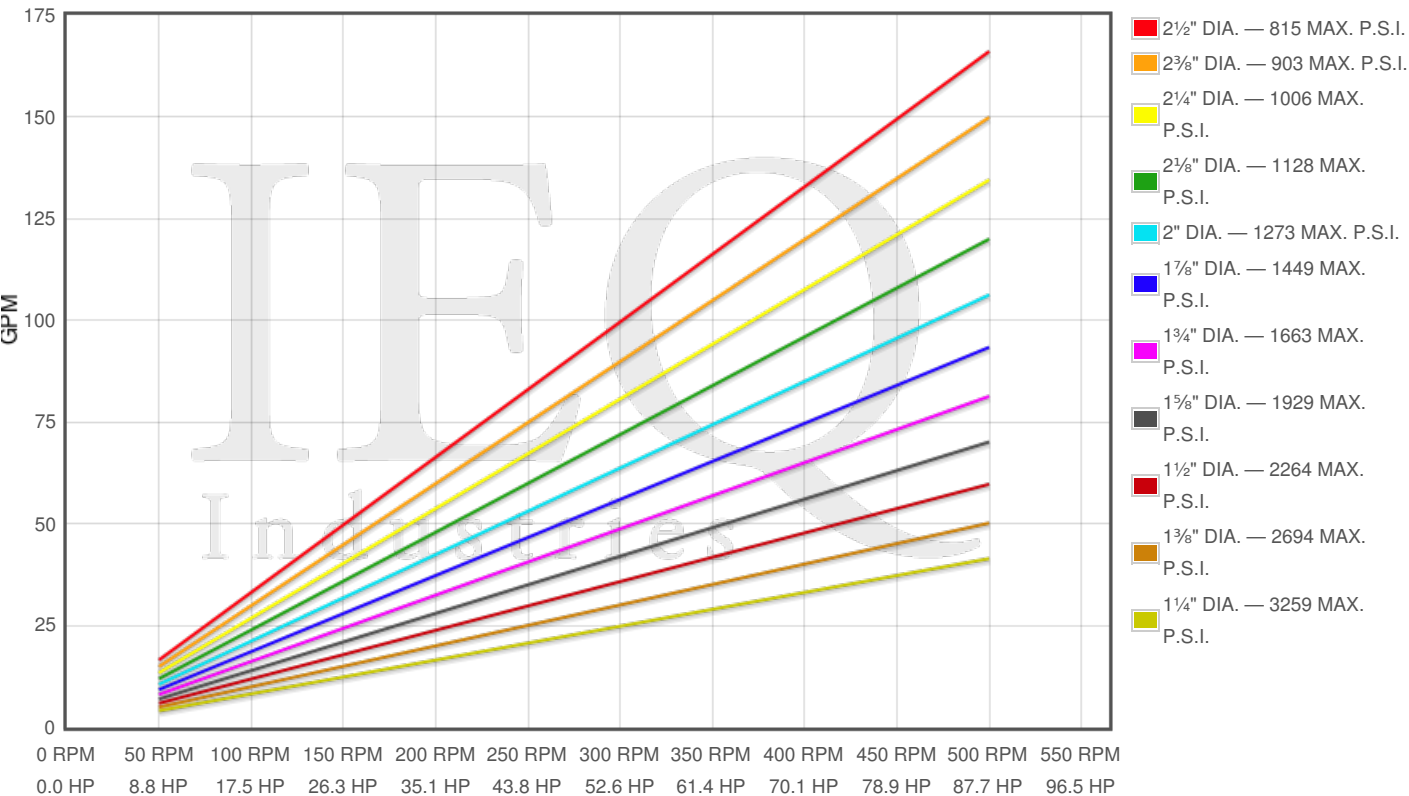
Specs

Spec	U.S. Standard
Type:	quintuplex
Minimum Plunger Diameter:	1 1/4"
Maximum Plunger Diameter:	2 1/2"
Stroke length:	3 1/8"
Maximum Working Pressure:	3,260 PSI
Rod/Piston Load:	4000lb
Gallons per Minute:	161.0
Barrels per Day:	5520
Brake Horse Power:	88.0



Pump Curves

Hover over Power Curves to reveal RPM and GPM



Performance Data Table

Pump	English Units					50 RPM		200 RPM		350 RPM		500 RPM	
	Plunger Dia. In.	Plunger Area Sq. In.	BPD per RPM	GPM per RPM	Max Press. PSI	BPD	GPM	BPD	GPM	BPD	GPM	BPD	GPM
5P-323	2.500	4.9087	11.384	0.3320	815	569	17	2277	66	3984	116	5692	166
	2.375	4.4301	10.274	0.2997	903	514	15	2055	60	3596	105	5137	150
	2.250	3.9761	9.221	0.2689	1006	461	13	1844	54	3227	94	4611	134
	2.125	3.5466	8.225	0.2399	1128	411	12	1645	48	2879	84	4112	120
	2.000	3.1416	7.286	0.2125	1273	364	11	1457	42	2550	74	3643	106
	1.875	2.7612	6.403	0.1868	1449	320	9	1281	37	2241	65	3202	93
	1.750	2.4053	5.578	0.1627	1663	279	8	1116	33	1952	57	2789	81
	1.625	2.0739	4.810	0.1403	1929	240	7	962	28	1683	49	2405	70
	1.500	1.7671	4.098	0.1195	2264	205	6	820	24	1434	42	2049	60
	1.375	1.4849	3.444	0.1004	2694	172	5	689	20	1205	35	1722	50
	1.250	1.2272	2.846	0.0830	3259	142	4	569	17	996	29	1423	42

Disclaimer I

This website is intended as a reference tool only. It has been constructed from published data that is based on manufacturer's sales and engineering documents that are either current, historical and obsolete. Much of the machinery data contained herein has been re-rated through the years with different engineering criteria which maybe in conflict with legacy data. Much of the content published here is calculated online with the use of dynamic data using formulas and extrapolations considered to be sound engineering formulas and are correct to the degree that the data used is accurate. We have done our best to be as precise as as possible in this posting but do not represent any of the calculations or performance data to be entirely accurate. The data published here is intended to be general information rather than actual and to serve as a reference rather than a technical absolute. The user of such data should confirm such information independently.

Copyright and Disclaimers

WheatleyGaso.com is your resource for Gaso pumps, Gaso pump parts and a supplier of ORIGINAL GASO PARTS and equipment, new used and remanufactured Wheatley, GASO and Wheatley/GASO plunger and piston pumps and pump parts and is not affiliated with Wheatley/GASO Inc. or its parent company, National Oilwell Varco, Copyright Å©2024 IEQ Industries, a Gallagher Fluid Handling Company. All rights reserved, *Used under license from IntelleQ Holdings, LLC.