

Wheatley, HP125-AM (110Q-3M), Quintuplex, Plunger Pump

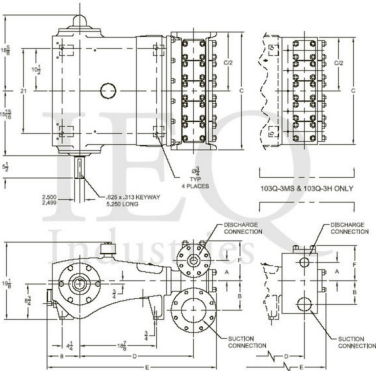
Pumps in this series

- [HP125-AL \(110Q-3L\)](#)
- [HP125-AM \(110Q-3M\)](#)
- [HP125-H \(110Q-H\)](#)
- [HP125-M](#)
- [HP125-MS \(110Q-3MS\)](#)

- 110 horsepower 3 1/2" stroke horizontal quintuplex single acting plunger pump
- Available in four fluid end materials
- Pump speeds up to 540 RPM
- Multiple accessory gear reduction unit ratios

Specs

Spec	U.S. Standard
Type:	quintuplex
Minimum Plunger Diameter:	1 5/8"
Maximum Plunger Diameter:	2 1/2"
Stroke length:	3 1/2"
Maximum Working Pressure:	2,295 PSI
Rod/Piston Load:	4760lb
Gallons per Minute:	163.6
Barrels per Day:	5609
Brake Horse Power:	110.0



Features/Benefits

- Cast iron power frame
- Ductile Iron Crankshaft
- Heavy-duty, tapered roller crankshaft bearings
- Precision type, aluminum alloy crankpin bearings
- Cast iron crossheads with upper/lower oil grooves
- Internal pressure lubrication
- Ductile iron connecting rods
- Alloy steel crosshead pins
- Bronze bearing crosshead pin bushings
- Rated rod load is 5090 lbs.
- Plungers - Solid Ceramic, or Tungsten coated

Disclaimer I

This website is intended as a reference tool only. It has been constructed from published data that is based on manufacturer's sales and engineering documents that are either current, historical and obsolete. Much of the machinery data contained herein has been re-rated through the years with different engineering criteria which maybe in conflict with legacy data. Much of the content published here is calculated online with the use of dynamic data using formulas and extrapolations considered to be sound engineering formulas and are correct to the degree that the data used is accurate. We have done our best to be as precise as as possible in this posting but do not represent any of the calculations or performance data to be entirely accurate. The data published here is intended to be general information rather than actual and to serve as a reference rather than a technical absolute. The user of such data should confirm such information independently.

Copyright and Disclaimers

WheatleyGas.com is your resource for Gaso pumps, Gaso pump parts and a supplier of ORIGINAL GASO PARTS and equipment, new used and remanufactured Wheatley, GASO and Wheatley/GASO plunger and piston pumps and pump parts and is not affiliated with Wheatley/GASO Inc. or its parent company, National Oilwell Varco, Copyright ©2024 IEQ Industries, a Gallagher Fluid Handling Company. All rights reserved, *Used under license from IntelleQ Holdings, LLC.