

Wheatley, HP200-AL (217Q-4L), Quintuplex, Plunger Pump

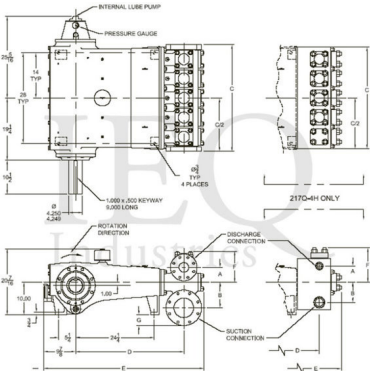
Pumps in this series

- [HP200-AL \(217Q-4L\)](#)
- [HP200-AM \(217Q-4M\)](#)
- [HP200-L](#)
- [HP200-M](#)
- [HP200-MS \(217Q-4H\)](#)

- 217 horsepower 4 1/2" stroke horizontal quintuplex single acting plunger pump
- Available in three end materials
- Pump speeds up to 390 RPM
- Multiple accessory gear reduction unit ratios

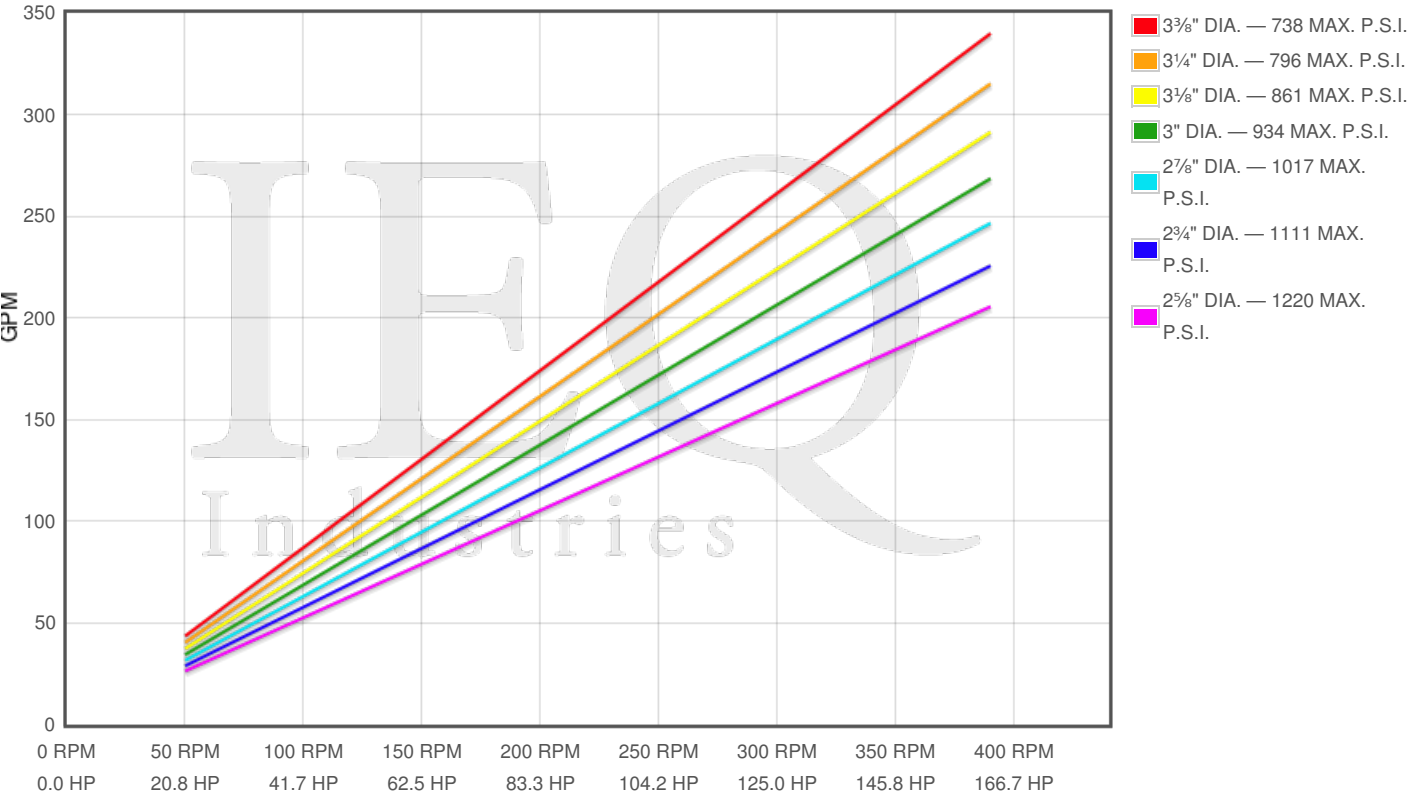
Specs

Spec	U.S. Standard
Type:	quintuplex
Minimum Plunger Diameter:	2 5⁄8"
Maximum Plunger Diameter:	3 3⁄8"
Stroke length:	4 1⁄2"
Maximum Working Pressure:	1,440 PSI
Rod/Piston Load:	6600lb
Gallons per Minute:	339.8
Barrels per Day:	11650
Brake Horse Power:	217.0



Pump Curves

Hover over Power Curves to reveal RPM and GPM



Performance Data Table

Pump	English Units					50 RPM		150 RPM		250 RPM		350 RPM		390 RPM	
	Plunger Dia. In.	Plunger Area Sq. In.	BPD per RPM	GPM per RPM	Max Press. PSI	BPD	GPM	BPD	GPM	BPD	GPM	BPD	GPM	BPD	GPM
HP200-AL 217Q-4L	3.375	8.9462	29.876	0.8714	738	1494	44	4481	131	7469	218	10457	305	11652	340
	3.250	8.2958	27.704	0.8080	796	1385	40	4156	121	6926	202	9696	283	10805	315
	3.125	7.6699	25.614	0.7471	861	1281	37	3842	112	6403	187	8965	261	9989	291
	3.000	7.0686	23.606	0.6885	934	1180	34	3541	103	5901	172	8262	241	9206	269
	2.875	6.4918	21.680	0.6323	1017	1084	32	3252	95	5420	158	7588	221	8455	247
	2.750	5.9396	19.835	0.5785	1111	992	29	2975	87	4959	145	6942	202	7736	226
	2.625	5.4119	18.073	0.5271	1220	904	26	2711	79	4518	132	6326	184	7049	206

Features/Benefits

- Cast iron power frame
- Ductile Iron Crankshaft
- Heavy-duty, Tapered Roller Crankshaft Bearings
- Precision Type, Aluminum Alloy Crankpin Bearings
- Stainless Steel Extension Rods
- Internal Pressure Lubrication
- Ductile Iron Connecting Rods
- Alloy Steel Crosshead Pins
- Bronze Bearing Crosshead Pin Bushings
- Cast Iron Crossheads with upper/lower oil grooves
- Rated Rod Load is 8800 lbs.
- Bolted Valve Covers
- Integral Stuffing Boxes & Glands

Disclaimer I

This website is intended as a reference tool only. It has been constructed from published data that is based on manufacturer's sales and engineering documents that are either current, historical and obsolete. Much of the machinery data contained herein has been re-rated through the years with different engineering criteria which maybe in conflict with legacy data. Much of the content published here is calculated online with the use of dynamic data using formulas and extrapolations considered to be sound engineering formulas and are correct to the degree that the data used is accurate. We have done our best to be as precise as as possible in this posting but do not represent any of the calculations or performance data to be entirely accurate. The data published here is intended to be general information rather than actual and to serve as a reference rather than a technical absolute. The user of such data should confirm such information independently.

Copyright and Disclaimers

WheatleyGaso.com is your resource for Gaso pumps, Gaso pump parts and a supplier of ORIGINAL GASO PARTS and equipment, new used and remanufactured Wheatley, GASO and Wheatley/GASO plunger and piston pumps and pump parts and is not affiliated with Wheatley/GASO Inc. or its parent company, National Oilwell Varco, Copyright ©2024 IEQ Industries, a Gallagher Fluid Handling Company. All rights reserved, \*Used under license from Intelleg Holdings, LLC.