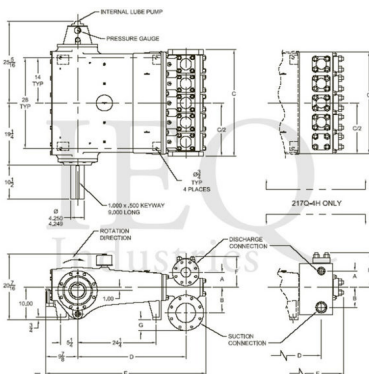
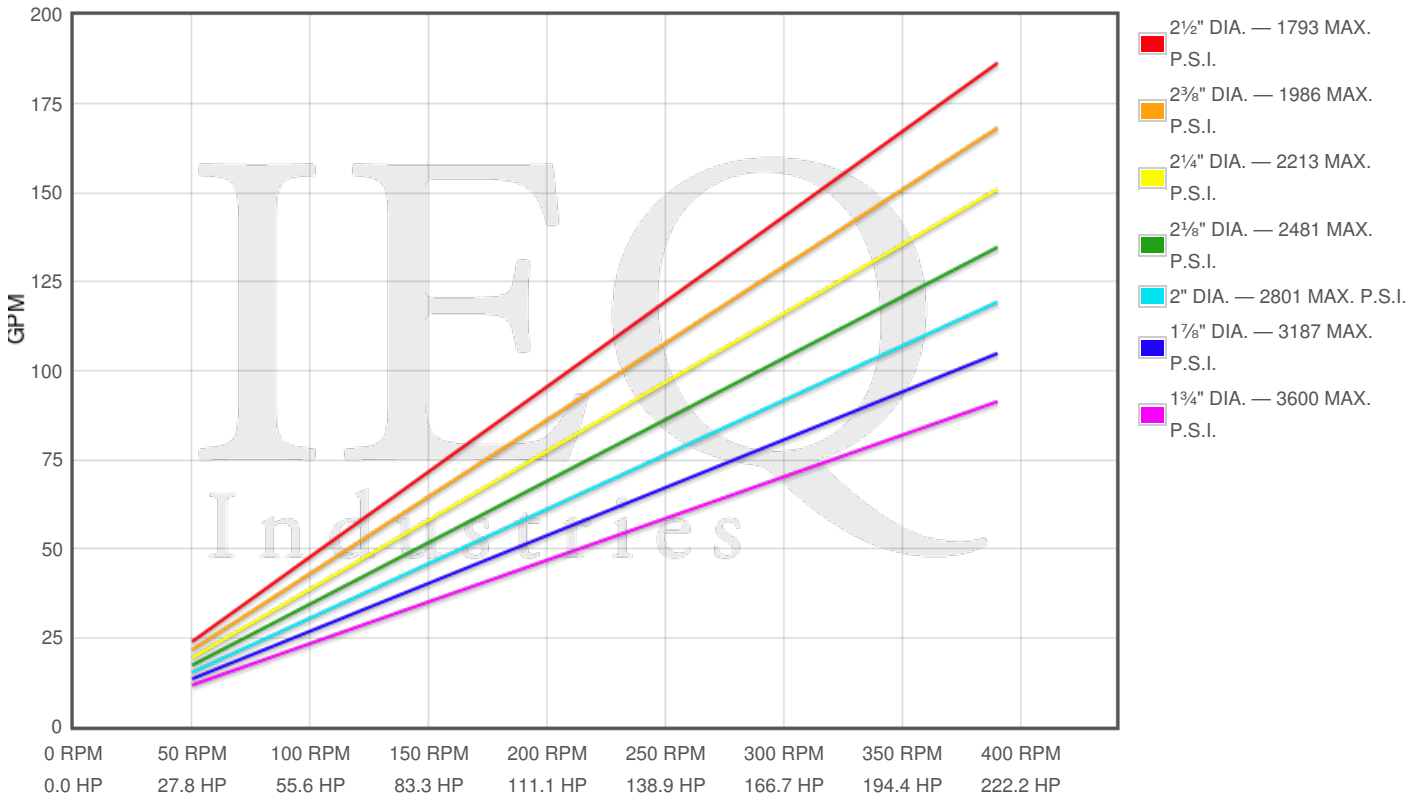


- 217 horsepower 4 1/2" stroke horizontal quintuplex single acting plunger pump
- Available in three end materials
- Pump speeds up to 390 RPM
- Multiple accessory gear reduction unit ratios

Spec	U.S. Standard
Type:	quintuplex
Minimum Plunger Diameter:	1¾"
Maximum Plunger Diameter:	2½"
Stroke length:	4½"
Maximum Working Pressure:	3,600 PSI
Rod/Piston Load:	8800lb
Gallons per Minute:	186.5
Barrels per Day:	6394
Brake Horse Power:	217.0



Hover over Power Curves to reveal RPM and GPM



Pump	English Units					50 RPM		150 RPM		250 RPM		350 RPM		390 RPM	
	Plunger Dia. In.	Plunger Area Sq. In.	BPD per RPM	GPM per RPM	Max Press. PSI	BPD	GPM	BPD	GPM	BPD	GPM	BPD	GPM	BPD	GPM
HP200-AM 217Q-4M	2.500	4.9087	16.393	0.4781	1793	820	24	2459	72	4098	120	5738	167	6393	186
	2.375	4.4301	14.795	0.4315	1986	740	22	2219	65	3699	108	5178	151	5770	168
	2.250	3.9761	13.278	0.3873	2213	664	19	1992	58	3320	97	4647	136	5179	151
	2.125	3.5466	11.844	0.3454	2481	592	17	1777	52	2961	86	4145	121	4619	135
	2.000	3.1416	10.491	0.3060	2801	525	15	1574	46	2623	76	3672	107	4092	119
	1.875	2.7612	9.221	0.2689	3187	461	13	1383	40	2305	67	3227	94	3596	105
	1.750	2.4053	8.032	0.2343	3600	402	12	1205	35	2008	59	2811	82	3133	91

Features/Benefits

- Cast iron power frame
- Ductile Iron Crankshaft
- Heavy-duty, Tapered Roller Crankshaft Bearings
- Precision Type, Aluminum Alloy Crankpin Bearings
- Stainless Steel Extension Rods
- Internal Pressure Lubrication
- Ductile Iron Connecting Rods
- Alloy Steel Crosshead Pins
- Bronze Bearing Crosshead Pin Bushings
- Cast Iron Crossheads with upper/lower oil grooves
- Rated Rod Load is 8800 lbs.
- Bolted Valve Covers
- Integral Stuffing Boxes & Glands

Disclaimer I

This website is intended as a reference tool only. It has been constructed from published data that is based on manufacturer's sales and engineering documents that are either current, historical and obsolete. Much of the machinery data contained herein has been re-rated through the years with different engineering criteria which maybe in conflict with legacy data. Much of the content published here is calculated online with the use of dynamic data using formulas and extrapolations considered to be sound engineering formulas and are correct to the degree that the data used is accurate. We have done our best to be as precise as as possible in this posting but do not represent any of the calculations or performance data to be entirely accurate. The data published here is intended to be general information rather than actual and to serve as a reference rather than a technical absolute. The user of such data should confirm such information independently.

Copyright and Disclaimers

WheatleyGasos.com is your resource for Gaso pumps, Gaso pump parts and a supplier of ORIGINAL GASO PARTS and equipment, new used and remanufactured Wheatley, GASO and Wheatley/GASO plunger and piston pumps and pump parts and is not affiliated with Wheatley/GASO Inc. or its parent company, National Oilwell Varco, Copyright ©2024 IEQ Industries, a Gallagher Fluid Handling Company. All rights reserved, *Used under license from Intelleg Holdings, LLC.