

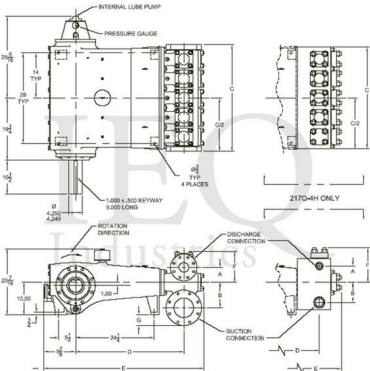
Wheatley, HP200-M, Quintuplex, Plunger Pump

Pumps in this series

- [HP200-AL \(217Q-4L\)](#)
- [HP200-AM \(217Q-4M\)](#)
- [HP200-L](#)
- [HP200-M](#)
- [HP200-MS \(217Q-4H\)](#)

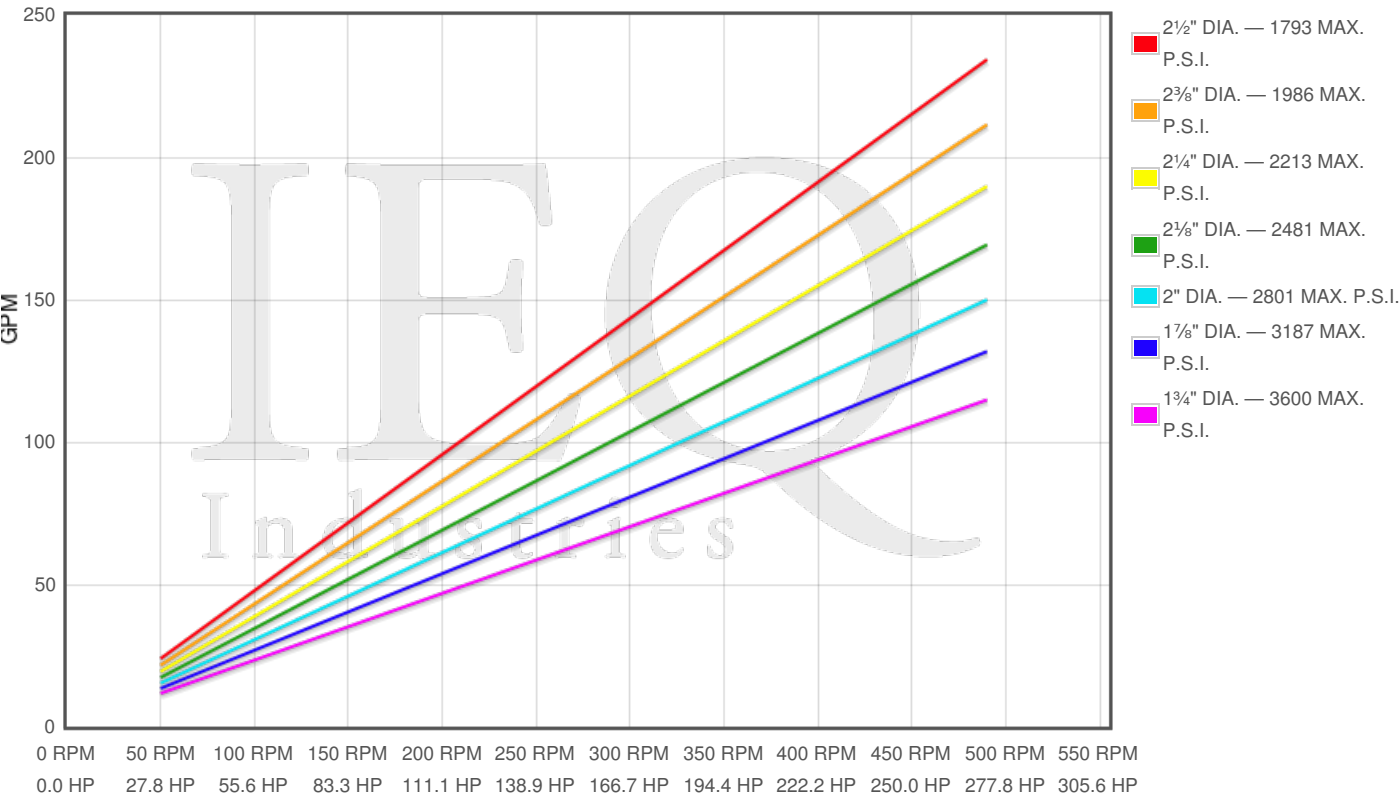
Specs

Spec	U.S. Standard
Type:	quintuplex
Minimum Plunger Diameter:	1 3⁄4"
Maximum Plunger Diameter:	2 1⁄2"
Stroke length:	4 1⁄2"
Maximum Working Pressure:	3,600 PSI
Rod/Piston Load:	8800lb
Gallons per Minute:	185.0
Barrels per Day:	6343
Brake Horse Power:	216.0



Pump Curves

Hover over Power Curves to reveal RPM and GPM



Performance Data Table

Pump	English Units					50 RPM		200 RPM		350 RPM		490 RPM	
	Plunger Dia. In.	Plunger Area Sq. In.	BPD per RPM	GPM per RPM	Max Press. PSI	BPD	GPM	BPD	GPM	BPD	GPM	BPD	GPM
HP200-M	2.500	4.9087	16.393	0.4781	1793	820	24	3279	96	5738	167	8033	234
	2.375	4.4301	14.795	0.4315	1986	740	22	2959	86	5178	151	7249	211
	2.250	3.9761	13.278	0.3873	2213	664	19	2656	77	4647	136	6506	190
	2.125	3.5466	11.844	0.3454	2481	592	17	2369	69	4145	121	5804	169
	2.000	3.1416	10.491	0.3060	2801	525	15	2098	61	3672	107	5141	150
	1.875	2.7612	9.221	0.2689	3187	461	13	1844	54	3227	94	4518	132
	1.750	2.4053	8.032	0.2343	3600	402	12	1607	47	2811	82	3936	115

Features/Benefits

- Cast iron power frame
- Ductile Iron Crankshaft
- Heavy-duty, Tapered Roller Crankshaft Bearings
- Precision Type, Aluminum Alloy Crankpin Bearings
- Stainless Steel Extension Rods
- Internal Pressure Lubrication
- Ductile Iron Connecting Rods
- Alloy Steel Crosshead Pins
- Bronze Bearing Crosshead Pin Bushings
- Cast Iron Crossheads with upper/lower oil grooves
- Rated Rod Load is 8800 lbs.
- Bolted Valve Covers
- Integral Stuffing Boxes & Glands

Disclaimer I

This website is intended as a reference tool only. It has been constructed from published data that is based on manufacturer's sales and engineering documents that are either current, historical and obsolete. Much of the machinery data contained herein has been re-rated through the years with different engineering criteria which maybe in conflict with legacy data. Much of the content published here is calculated online with the use of dynamic data using formulas and extrapolations considered to be sound engineering formulas and are correct to the degree that the data used is accurate. We have done our best to be as precise as as possible in this posting but do not represent any of the calculations or performance data to be entirely accurate. The data published here is intended to be general information rather than actual and to serve as a reference rather than a technical absolute. The user of such data should confirm such information independently.

Copyright and Disclaimers

WheatleyGaso.com is your resource for Gaso pumps, Gaso pump parts and a supplier of ORIGINAL GASO PARTS and equipment, new used and remanufactured Wheatley, GASO and Wheatley/GASO plunger and piston pumps and pump parts and is not affiliated with Wheatley/GASO Inc. or its parent company, National Oilwell Varco, Copyright ©2024 IEQ Industries, a Gallagher Fluid Handling Company. All rights reserved, *Used under license from Intelleg Holdings, LLC.