

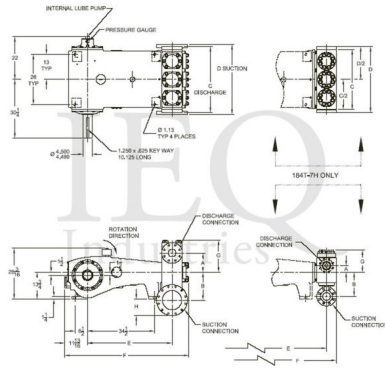
## Wheatley, HP250-L, Triplex, Plunger Pump

### Pumps in this series

- [HP250-AL](#)
- [HP250-AM](#)
- [HP250-H](#)
- [HP250-L](#)
- [HP250-M](#)

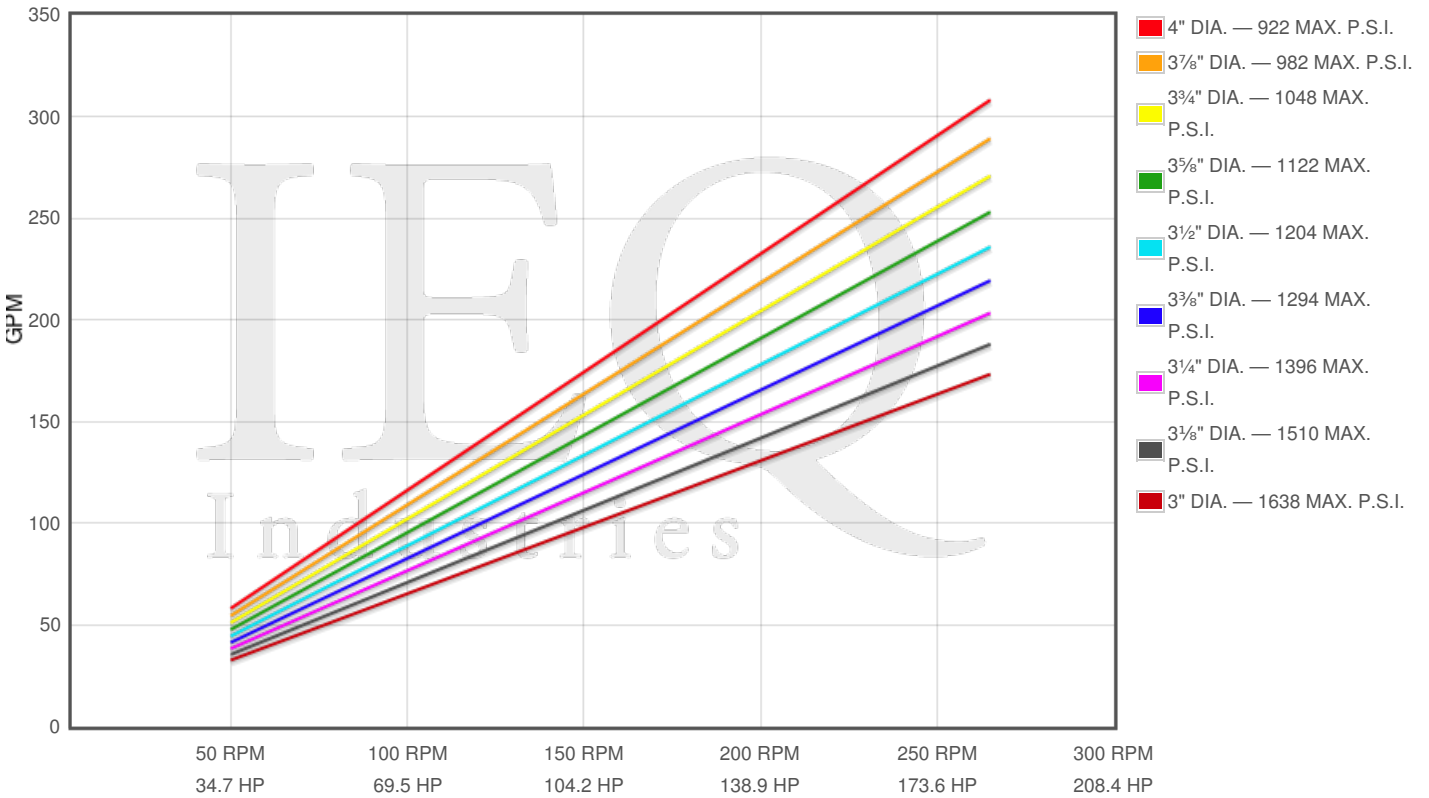
### Specs

Spec	U.S. Standard
Type:	triplex
Minimum Plunger Diameter:	3"
Maximum Plunger Diameter:	4"
Stroke length:	7 1/8"
Maximum Working Pressure:	1,640 PSI
Rod/Piston Load:	11580lb
Gallons per Minute:	308.2
Barrels per Day:	10567
Brake Horse Power:	182.7



### Pump Curves

Hover over Power Curves to reveal RPM and GPM



### Performance Data Table

Pump	English Units					50 RPM		150 RPM		250 RPM		265 RPM	
	Plunger Dia. In.	Plunger Area Sq. In.	BPD per RPM	GPM per RPM	Max Press. PSI	BPD	GPM	BPD	GPM	BPD	GPM	BPD	GPM
HP250-L	4.000	12.5664	39.867	1.1628	922	1993	58	5980	174	9967	291	10565	308
	3.875	11.7932	37.415	1.0913	982	1871	55	5612	164	9354	273	9915	289
	3.750	11.0447	35.040	1.0220	1048	1752	51	5256	153	8760	255	9286	271
	3.625	10.3206	32.743	0.9550	1122	1637	48	4911	143	8186	239	8677	253
	3.500	9.6211	30.523	0.8903	1204	1526	45	4579	134	7631	223	8089	236
	3.375	8.9462	28.382	0.8278	1294	1419	41	4257	124	7096	207	7521	219
	3.250	8.2958	26.319	0.7676	1396	1316	38	3948	115	6580	192	6974	203
	3.125	7.6699	24.333	0.7097	1510	1217	35	3650	106	6083	177	6448	188
	3.000	7.0686	22.425	0.6541	1638	1121	33	3364	98	5606	164	5943	173

## Disclaimer I

---

This website is intended as a reference tool only. It has been constructed from published data that is based on manufacturer's sales and engineering documents that are either current, historical and obsolete. Much of the machinery data contained herein has been re-rated through the years with different engineering criteria which maybe in conflict with legacy data. Much of the content published here is calculated online with the use of dynamic data using formulas and extrapolations considered to be sound engineering formulas and are correct to the degree that the data used is accurate. We have done our best to be as precise as as possible in this posting but do not represent any of the calculations or performance data to be entirely accurate. The data published here is intended to be general information rather than actual and to serve as a reference rather than a technical absolute. The user of such data should confirm such information independently.

---

### Copyright and Disclaimers

WheatleyGas.com is your resource for Gaso pumps, Gaso pump parts and a supplier of ORIGINAL GASO PARTS and equipment, new used and remanufactured Wheatley, GASO and Wheatley/GASO plunger and piston pumps and pump parts and is not affiliated with Wheatley/GASO Inc. or its parent company, National Oilwell Varco, Copyright ©2024 IEQ Industries, a Gallagher Fluid Handling Company. All rights reserved, \*Used under license from IntelleQ Holdings, LLC.