

Wheatley, HP360-AM (308T-7M), Triplex, Plunger Pump

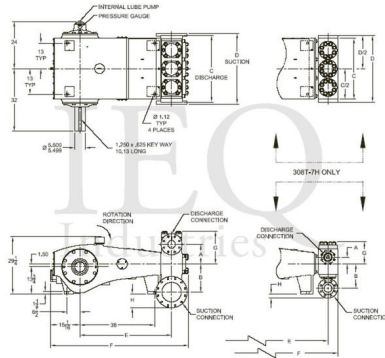
Pumps in this series

- [HP360-AL \(308T-7L\)](#)
- [HP360-AM \(308T-7M\)](#)
- [HP360-H \(308T-7H\)](#)
- [HP360-XL \(308T-7XL\)](#)

- 308 horsepower 7" stroke horizontal triplex single acting plunger pump
- Available in three fluid end materials
- Pump speeds up to 265 RPM

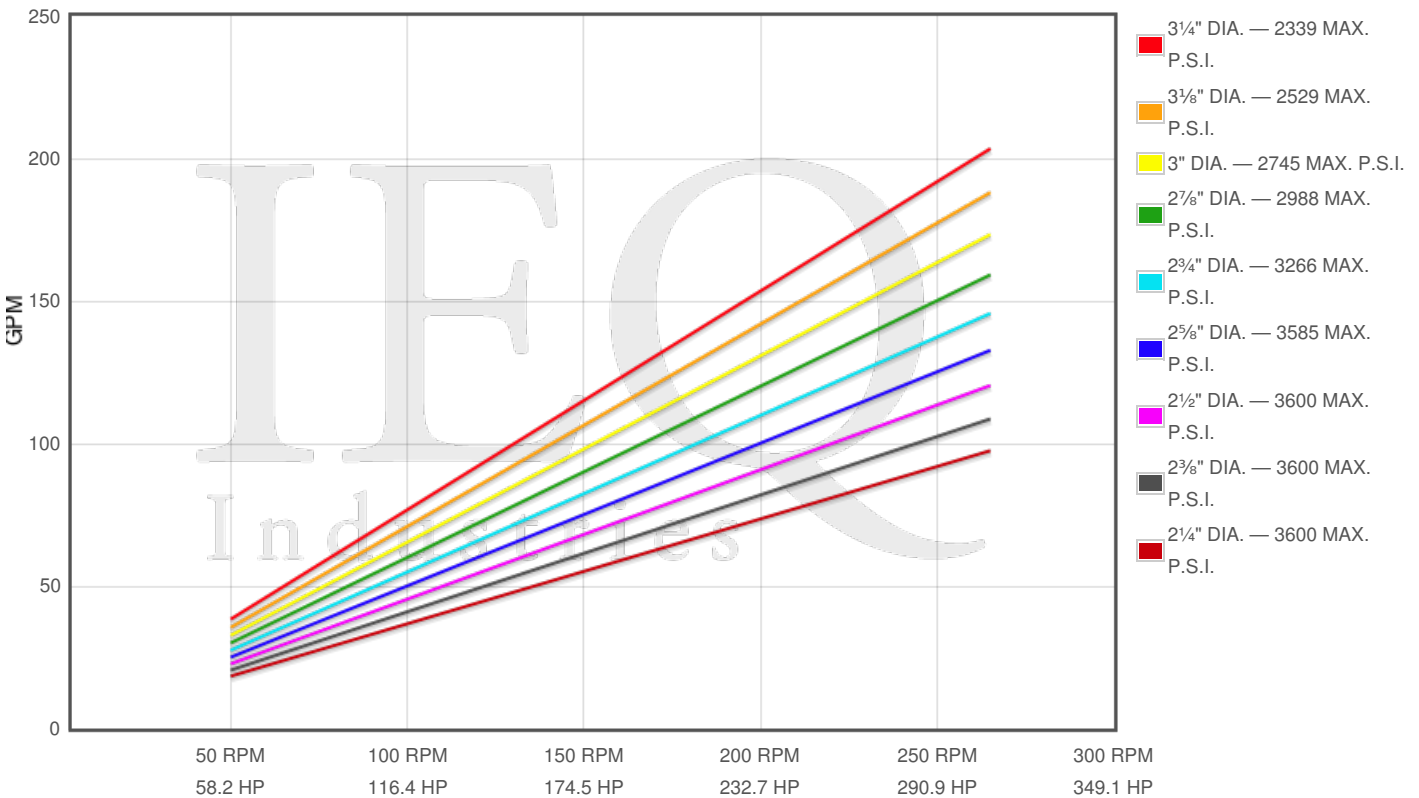
Specs

Spec	U.S. Standard
Type:	triplex
Minimum Plunger Diameter:	2 1/4"
Maximum Plunger Diameter:	3 1/4"
Stroke length:	7 1/8"
Maximum Working Pressure:	3,600 PSI
Rod/Piston Load:	19400lb
Gallons per Minute:	203.4
Barrels per Day:	6974
Brake Horse Power:	308.0



Pump Curves

Hover over Power Curves to reveal RPM and GPM



Performance Data Table

Pump	English Units					50 RPM		150 RPM		250 RPM		265 RPM	
	Plunger Dia. In.	Plunger Area Sq. In.	BPD per RPM	GPM per RPM	Max Press. PSI	BPD	GPM	BPD	GPM	BPD	GPM	BPD	GPM
HP360-AM 308T-7M	3.250	8.2958	26.319	0.7676	2339	1316	38	3948	115	6580	192	6974	203
	3.125	7.6699	24.333	0.7097	2529	1217	35	3650	106	6083	177	6448	188
	3.000	7.0686	22.425	0.6541	2745	1121	33	3364	98	5606	164	5943	173
	2.875	6.4918	20.596	0.6007	2988	1030	30	3089	90	5149	150	5458	159
	2.750	5.9396	18.844	0.5496	3266	942	27	2827	82	4711	137	4994	146
	2.625	5.4119	17.169	0.5008	3585	858	25	2575	75	4292	125	4550	133
	2.500	4.9087	15.573	0.4542	3600	779	23	2336	68	3893	114	4127	120
	2.375	4.4301	14.055	0.4099	3600	703	20	2108	61	3514	102	3725	109
	2.250	3.9761	12.614	0.3679	3600	631	18	1892	55	3154	92	3343	97

Features/Benefits

- Cast iron power frame
- Ductile Iron crankshaft
- Alloy steel crosshead pins
- Bronze bearing crosshead pin bushings
- Heavy-duty, tapered roller crankshaft bearings
- Precision type, aluminum alloy crankpin bearings
- Cast iron crossheads with upper/lower oil grooves
- Stainless steel extension rods
- Internal pressure lubrication
- Bolted Type Valve Covers
- Removable Stuffing Boxes & Glands
- Plungers - Ceramic, or Tungsten Coated

Disclaimer I

This website is intended as a reference tool only. It has been constructed from published data that is based on manufacturer's sales and engineering documents that are either current, historical and obsolete. Much of the machinery data contained herein has been re-rated through the years with different engineering criteria which maybe in conflict with legacy data. Much of the content published here is calculated online with the use of dynamic data using formulas and extrapolations considered to be sound engineering formulas and are correct to the degree that the data used is accurate. We have done our best to be as precise as as possible in this posting but do not represent any of the calculations or performance data to be entirely accurate. The data published here is intended to be general information rather than actual and to serve as a reference rather than a technical absolute. The user of such data should confirm such information independently.

Copyright and Disclaimers

WheatleyGas.com is your resource for Gaso pumps, Gaso pump parts and a supplier of ORIGINAL GASO PARTS and equipment, new used and remanufactured Wheatley, GASO and Wheatley/GASO plunger and piston pumps and pump parts and is not affiliated with Wheatley/GASO Inc. or its parent company, National Oilwell Varco, Copyright ©2024 IEQ Industries, a Gallagher Fluid Handling Company. All rights reserved, *Used under license from IntelleQ Holdings, LLC.