

Wheatley, HP360-XL (308T-7XL), Triplex, Plunger Pump

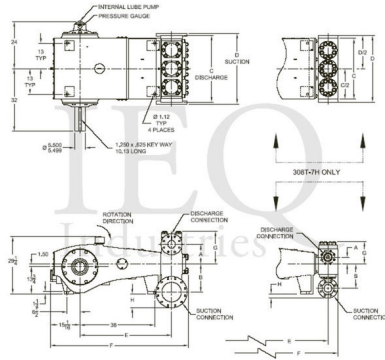
Pumps in this series

- [HP360-AL \(308T-7L\)](#)
- [HP360-AM \(308T-7M\)](#)
- [HP360-H \(308T-7H\)](#)
- [HP360-XL \(308T-7XL\)](#)

- 308 horsepower 7" stroke horizontal triplex single acting plunger pump
- Available in three fluid end materials
- Pump speeds up to 265 RPM

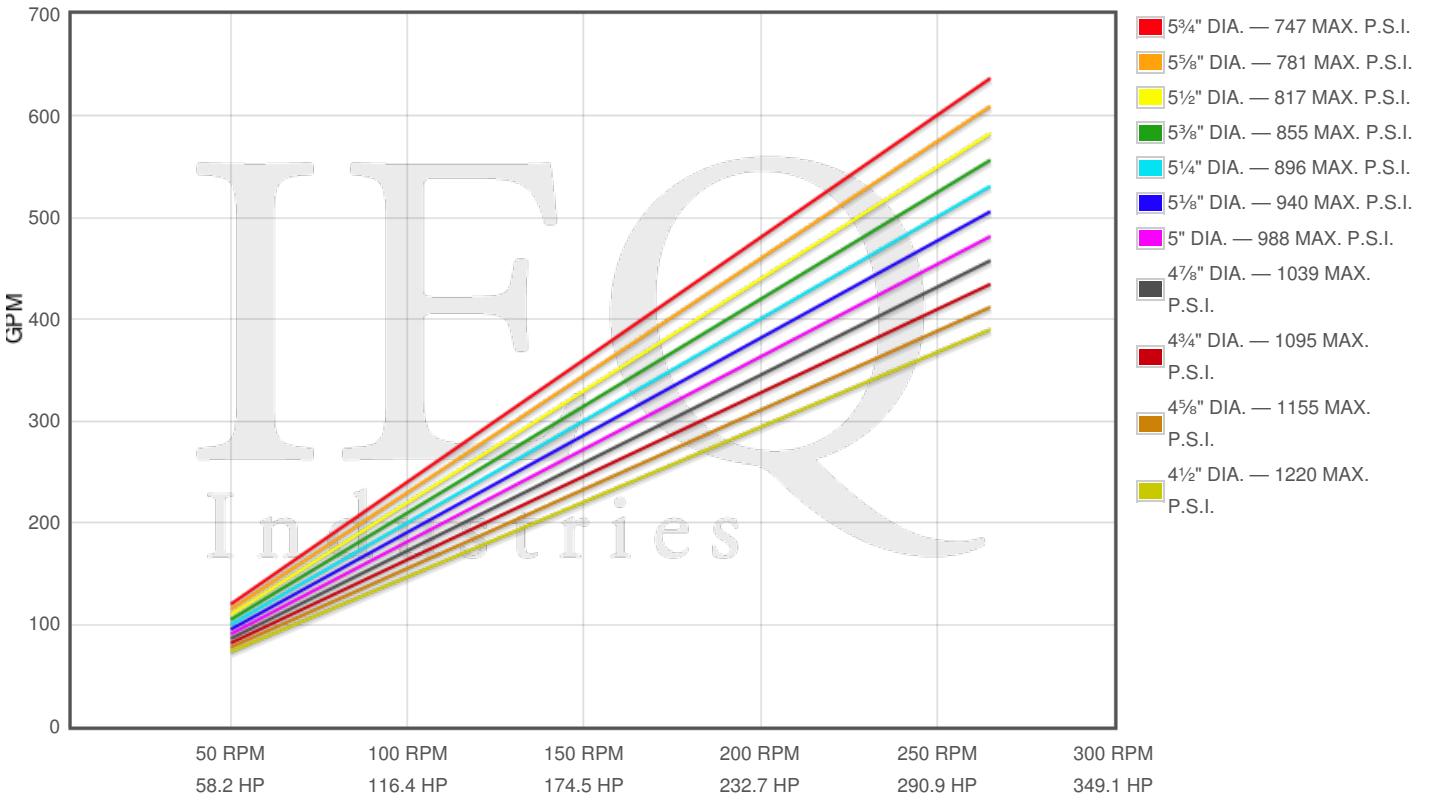
Specs

Spec	U.S. Standard
Type:	triplex
Minimum Plunger Diameter:	4½"
Maximum Plunger Diameter:	5¾"
Stroke length:	7½"
Maximum Working Pressure:	1,220 PSI
Rod/Piston Load:	19400lb
Gallons per Minute:	636.7
Barrels per Day:	21830
Brake Horse Power:	308.0



Pump Curves

Hover over Power Curves to reveal RPM and GPM



Performance Data Table

Pump	English Units					50 RPM		150 RPM		250 RPM		265 RPM	
	Plunger Dia. In.	Plunger Area Sq. In.	BPD per RPM	GPM per RPM	Max Press. PSI	BPD	GPM	BPD	GPM	BPD	GPM	BPD	GPM
HP360-XL 308T-7XL	5.750	25.9672	82.382	2.4028	747	4119	120	12357	360	20596	601	21831	637
	5.625	24.8505	78.839	2.2995	781	3942	115	11826	345	19710	575	20892	609
	5.500	23.7583	75.374	2.1984	817	3769	110	11306	330	18844	550	19974	583
	5.375	22.6906	71.987	2.0996	855	3599	105	10798	315	17997	525	19077	556
	5.250	21.6475	68.678	2.0031	896	3434	100	10302	300	17169	501	18200	531
	5.125	20.6290	65.446	1.9088	940	3272	95	9817	286	16362	477	17343	506
	5.000	19.6350	62.293	1.8169	988	3115	91	9344	273	15573	454	16508	481
	4.875	18.6655	59.217	1.7272	1039	2961	86	8883	259	14804	432	15693	458
	4.750	17.7205	56.219	1.6397	1095	2811	82	8433	246	14055	410	14898	435
	4.625	16.8002	53.299	1.5546	1155	2665	78	7995	233	13325	389	14124	412
	4.500	15.9043	50.457	1.4717	1220	2523	74	7569	221	12614	368	13371	390

Features/Benefits

- Cast iron power frame
- Ductile Iron crankshaft
- Alloy steel crosshead pins
- Bronze bearing crosshead pin bushings
- Heavy-duty, tapered roller crankshaft bearings
- Precision type, aluminum alloy crankpin bearings
- Cast iron crossheads with upper/lower oil grooves
- Stainless steel extension rods
- Internal pressure lubrication
- Bolted Type Valve Covers
- Removable Stuffing Boxes & Glands
- Plungers - Ceramic, or Tungsten Coated

Disclaimer I

This website is intended as a reference tool only. It has been constructed from published data that is based on manufacturer's sales and engineering documents that are either current, historical and obsolete. Much of the machinery data contained herein has been re-rated through the years with different engineering criteria which maybe in conflict with legacy data. Much of the content published here is calculated online with the use of dynamic data using formulas and extrapolations considered to be sound engineering formulas and are correct to the degree that the data used is accurate. We have done our best to be as precise as as possible in this posting but do not represent any of the calculations or performance data to be entirely accurate. The data published here is intended to be general information rather than actual and to serve as a reference rather than a technical absolute. The user of such data should confirm such information independently.

Copyright and Disclaimers

WheatleyGas.com is your resource for Gaso pumps, Gaso pump parts and a supplier of ORIGINAL GASO PARTS and equipment, new used and remanufactured Wheatley, GASO and Wheatley/GASO plunger and piston pumps and pump parts and is not affiliated with Wheatley/GASO Inc. or its parent company, National Oilwell Varco, p Copyright ©2017, IntelIQ Holdings, LLC. All rights reserved, *Used under license from IntelIQ Holdings, LLC.