

Wheatley, HP600-AM (543Q-7M), Quintuplex, Plunger Pump

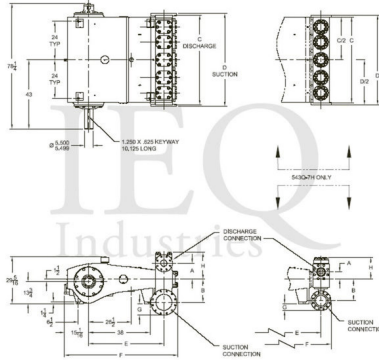
Pumps in this series

- [HP600-AL \(543Q-7L\)](#)
- [HP600-AM \(543Q-7M\)](#)
- [HP600-H \(543Q-7H\)](#)
- [HP600-XL \(543Q-7XL\)](#)

- 543 horsepower 7 1/8" stroke horizontal quintuplex single acting plunger pump
- Available in two fluid end materials
- Pump speeds up to 280 RPM

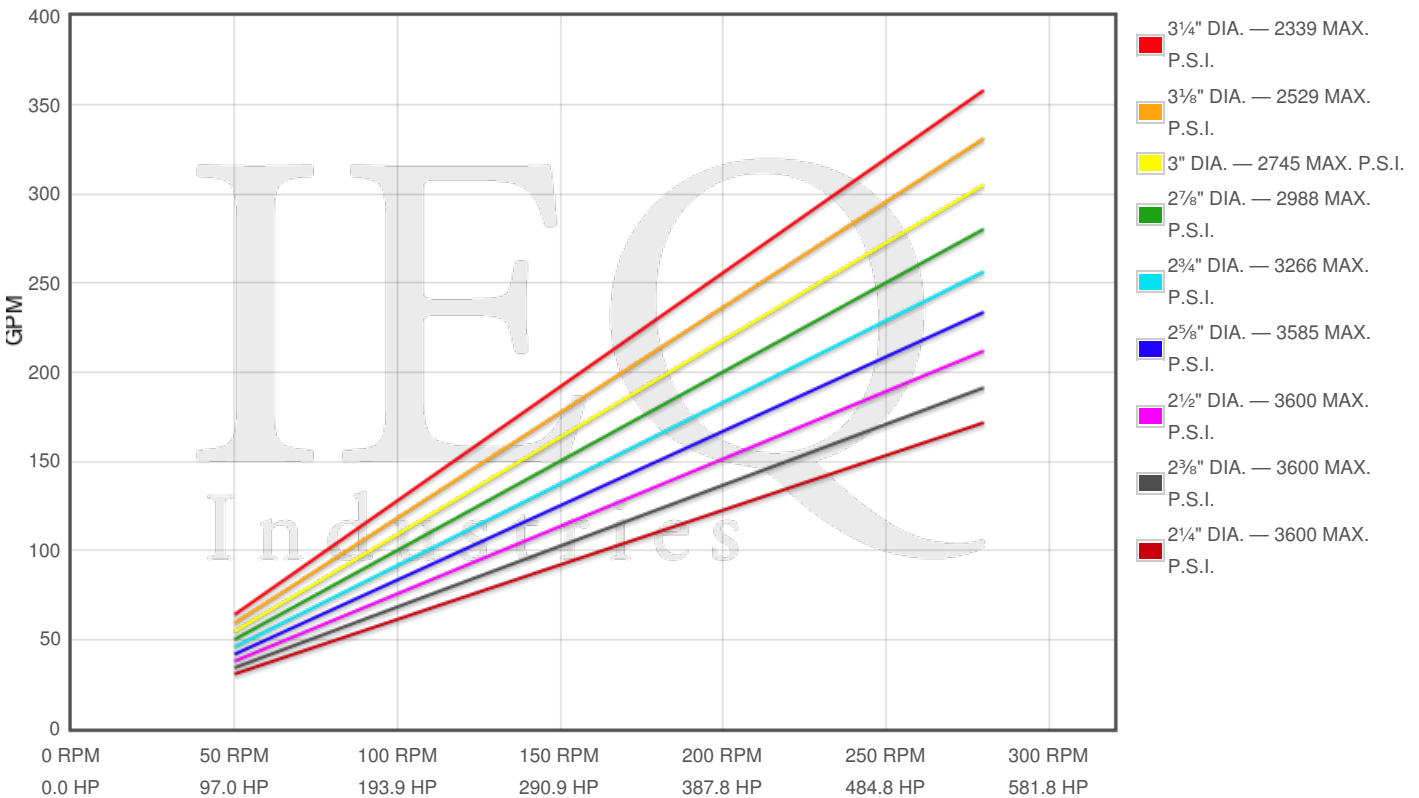
Specs

Spec	U.S. Standard
Type:	quintuplex
Minimum Plunger Diameter:	2 1/4"
Maximum Plunger Diameter:	3 1/4"
Stroke length:	7 1/8"
Maximum Working Pressure:	3,600 PSI
Rod/Piston Load:	19400lb
Gallons per Minute:	358.2
Barrels per Day:	12281
Brake Horse Power:	543.0



Pump Curves

Hover over Power Curves to reveal RPM and GPM



Performance Data Table

Pump	English Units					50 RPM		150 RPM		250 RPM		280 RPM	
	Plunger Dia. In.	Plunger Area Sq. In.	BPD per RPM	GPM per RPM	Max Press. PSI	BPD	GPM	BPD	GPM	BPD	GPM	BPD	GPM
HP600-AM 543Q-7M	3.250	8.2958	43.864	1.2794	2339	2193	64	6580	192	10966	320	12282	358
	3.125	7.6699	40.555	1.1829	2529	2028	59	6083	177	10139	296	11355	331
	3.000	7.0686	37.376	1.0901	2745	1869	55	5606	164	9344	273	10465	305
	2.875	6.4918	34.326	1.0012	2988	1716	50	5149	150	8582	250	9611	280
	2.750	5.9396	31.406	0.9160	3266	1570	46	4711	137	7852	229	8794	256
	2.625	5.4119	28.616	0.8346	3585	1431	42	4292	125	7154	209	8012	234
	2.500	4.9087	25.955	0.7570	3600	1298	38	3893	114	6489	189	7268	212
	2.375	4.4301	23.425	0.6832	3600	1171	34	3514	102	5856	171	6559	191
	2.250	3.9761	21.024	0.6132	3600	1051	31	3154	92	5256	153	5887	172

Features/Benefits

- Cast iron power frame
- Ductile Iron crankshaft
- Heavy-duty, tapered roller crankshaft bearings
- Precision type, aluminum alloy crankpin bearings
- Ductile iron connecting rods
- Roller Type Center Main Bearings
- Alloy steel crosshead pins
- Bronze bearing crosshead pin bushings
- Cast iron crossheads with upper/lower oil grooves
- Stainless steel extension rods
- Internal pressure lubrication
- Rated rod load is 19400 lbs.
- Bolted Type Valve Covers
- Removable Stuffing Boxes & Glands
- Plungers - Solid Ceramic, or Tungsten coated

Disclaimer I

This website is intended as a reference tool only. It has been constructed from published data that is based on manufacturer's sales and engineering documents that are either current, historical and obsolete. Much of the machinery data contained herein has been re-rated through the years with different engineering criteria which maybe in conflict with legacy data. Much of the content published here is calculated online with the use of dynamic data using formulas and extrapolations considered to be sound engineering formulas and are correct to the degree that the data used is accurate. We have done our best to be as precise as as possible in this posting but do not represent any of the calculations or performance data to be entirely accurate. The data published here is intended to be general information rather than actual and to serve as a reference rather than a technical absolute. The user of such data should confirm such information independently.

Copyright and Disclaimers

WheatleyGas.com is your resource for Gaso pumps, Gaso pump parts and a supplier of ORIGINAL GASO PARTS and equipment, new used and remanufactured Wheatley, GASO and Wheatley/GASO plunger and piston pumps and pump parts and is not affiliated with Wheatley/GASO Inc. or its parent company, National Oilwell Varco, Copyright ©2024 IEQ Industries, a Gallagher Fluid Handling Company. All rights reserved, *Used under license from IntelleQ Holdings, LLC.