

Wheatley, HP600-XL (543Q-7XL), Quintuplex, Plunger Pump

Pumps in this series

[HP600-AL \(543Q-7L\)](#)

[HP600-AM \(543Q-7M\)](#)

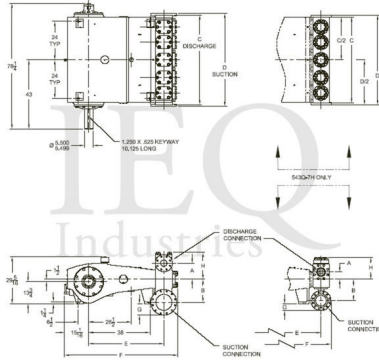
[HP600-H \(543Q-7H\)](#)

[HP600-XL \(543Q-7XL\)](#)

- 543 horsepower 7 1/8" stroke horizontal quintuplex single acting plunger pump
- Available in two fluid end materials
- Pump speeds up to 280 RPM

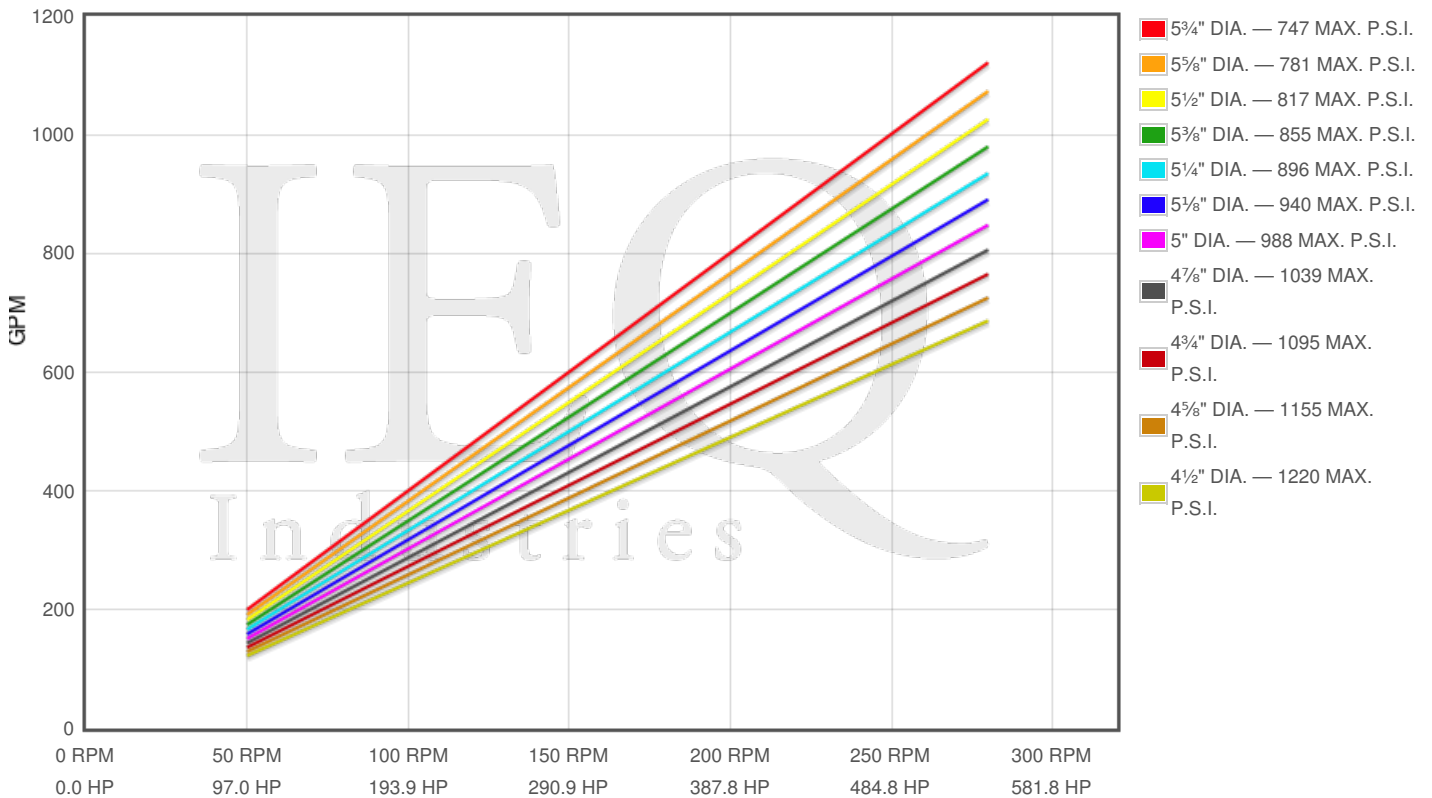
Specs

Spec	U.S. Standard
Type:	quintuplex
Minimum Plunger Diameter:	4 1/2"
Maximum Plunger Diameter:	5 3/4"
Stroke length:	7 1/8"
Maximum Working Pressure:	1,220 PSI
Rod/Piston Load:	19400lb
Gallons per Minute:	1121.2
Barrels per Day:	38441
Brake Horse Power:	543.0



Pump Curves

Hover over Power Curves to reveal RPM and GPM



Performance Data Table

Pump	English Units					50 RPM		150 RPM		250 RPM		280 RPM	
	Plunger Dia. In.	Plunger Area Sq. In.	BPD per RPM	GPM per RPM	Max Press. PSI	BPD	GPM	BPD	GPM	BPD	GPM	BPD	GPM
HP600-XL 543Q-7XL	5.750	25.9672	137.304	4.0047	747	6865	200	20596	601	34326	1001	38445	1121
	5.625	24.8505	131.399	3.8325	781	6570	192	19710	575	32850	958	36792	1073
	5.500	23.7583	125.624	3.6640	817	6281	183	18844	550	31406	916	35175	1026
	5.375	22.6906	119.978	3.4994	855	5999	175	17997	525	29995	875	33594	980
	5.250	21.6475	114.463	3.3385	896	5723	167	17169	501	28616	835	32050	935
	5.125	20.6290	109.077	3.1814	940	5454	159	16362	477	27269	795	30542	891
	5.000	19.6350	103.821	3.0281	988	5191	151	15573	454	25955	757	29070	848
	4.875	18.6655	98.695	2.8786	1039	4935	144	14804	432	24674	720	27635	806
	4.750	17.7205	93.699	2.7329	1095	4685	137	14055	410	23425	683	26236	765
	4.625	16.8002	88.832	2.5909	1155	4442	130	13325	389	22208	648	24873	725
	4.500	15.9043	84.095	2.4528	1220	4205	123	12614	368	21024	613	23547	687

Features/Benefits

- Cast iron power frame
- Ductile Iron crankshaft
- Heavy-duty, tapered roller crankshaft bearings
- Precision type, aluminum alloy crankpin bearings
- Ductile iron connecting rods
- Roller Type Center Main Bearings
- Alloy steel crosshead pins
- Bronze bearing crosshead pin bushings
- Cast iron crossheads with upper/lower oil grooves
- Stainless steel extension rods
- Internal pressure lubrication
- Rated rod load is 19400 lbs.
- Bolted Type Valve Covers
- Removable Stuffing Boxes & Glands
- Plungers - Solid Ceramic, or Tungsten coated

Disclaimer I

This website is intended as a reference tool only. It has been constructed from published data that is based on manufacturer's sales and engineering documents that are either current, historical and obsolete. Much of the machinery data contained herein has been re-rated through the years with different engineering criteria which maybe in conflict with legacy data. Much of the content published here is calculated online with the use of dynamic data using formulas and extrapolations considered to be sound engineering formulas and are correct to the degree that the data used is accurate. We have done our best to be as precise as as possible in this posting but do not represent any of the calculations or performance data to be entirely accurate. The data published here is intended to be general information rather than actual and to serve as a reference rather than a technical absolute. The user of such data should confirm such information independently.

Copyright and Disclaimers

WheatleyGasO.com is your resource for Gaso pumps, Gaso pump parts and a supplier of ORIGINAL GASO PARTS and equipment, new used and remanufactured Wheatley, GASO and Wheatley/GASO plunger and piston pumps and pump parts and is not affiliated with Wheatley/GASO Inc. or its parent company, National Oilwell Varco, p Copyright ©2017, IntelIQ Holdings, LLC. All rights reserved, *Used under license from IntelIQ Holdings, LLC.