

Wheatley, Q3115-H (103Q-3H), Quintuplex, Plunger Pump

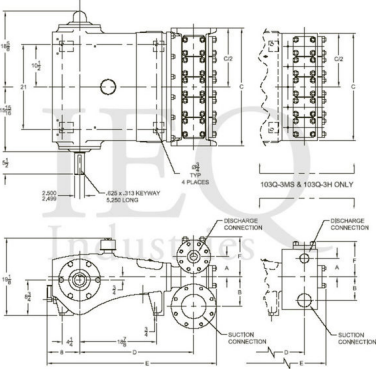
Pumps in this series

- Q3115-AL (103Q-3L)
- Q3115-AM (103Q-3M)
- Q3115-H (103Q-3H)
- Q3115-MS (103Q-3MS)

- 103 horsepower 3 1/2" stroke horizontal quintuplex single acting plunger pump
- Available in four fluid end materials
- Pump speeds up to 435 RPM
- Four accessory gear reduction unit ratios

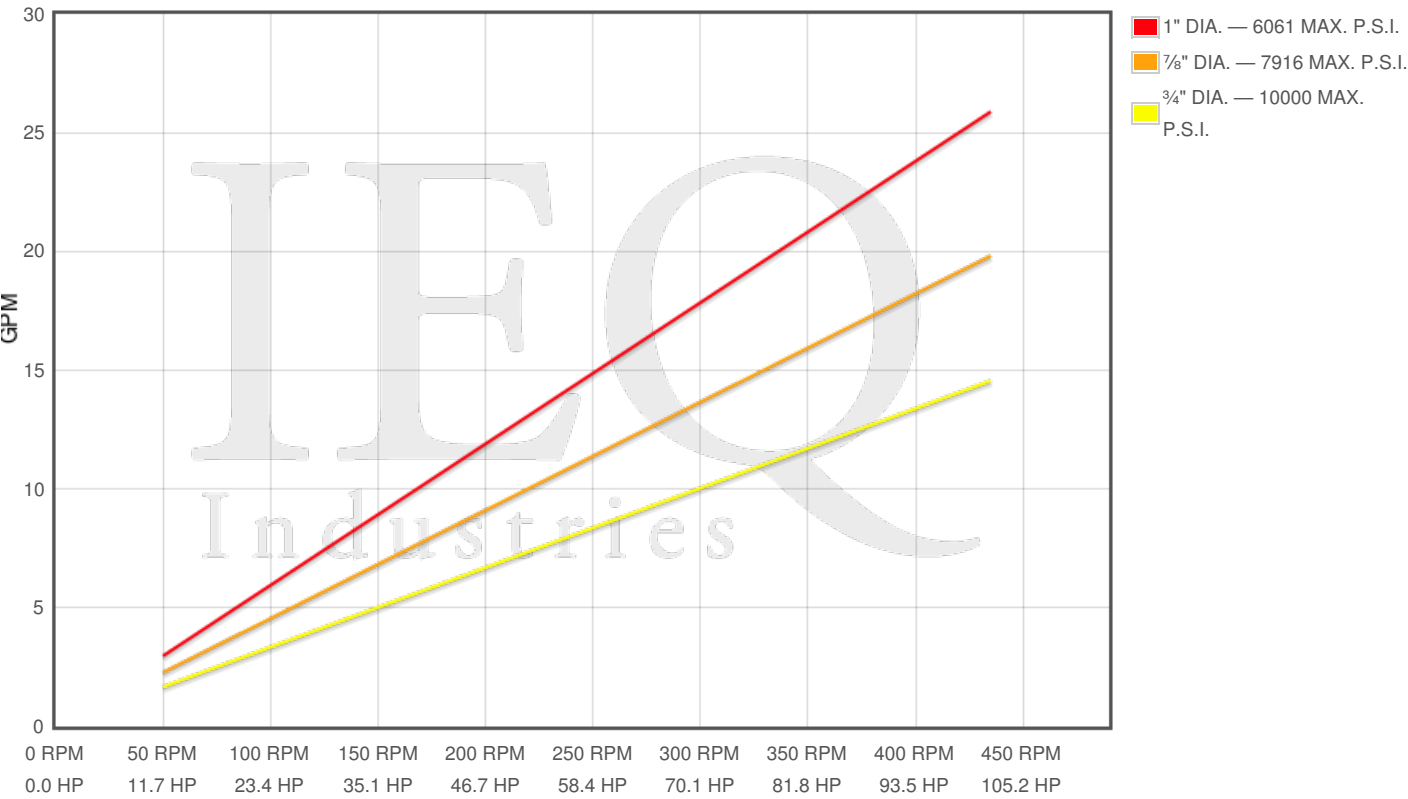
Specs

Spec	U.S. Standard
Type:	quintuplex
Minimum Plunger Diameter:	3/4"
Maximum Plunger Diameter:	1"
Stroke length:	3 1/2"
Maximum Working Pressure:	10,000 PSI
Rod/Piston Load:	4760lb
Gallons per Minute:	25.9
Barrels per Day:	888
Brake Horse Power:	102.0



Pump Curves

Hover over Power Curves to reveal RPM and GPM



Performance Data Table

Pump	English Units					50 RPM		150 RPM		250 RPM		350 RPM		435 RPM	
	Plunger Dia. In.	Plunger Area Sq. In.	BPD per RPM	GPM per RPM	Max Press. PSI	BPD	GPM	BPD	GPM	BPD	GPM	BPD	GPM	BPD	GPM
Q3115-H 103Q-3H	1.000	0.7854	2.040	0.0595	6061	102	3	306	9	510	15	714	21	887	26
	0.875	0.6013	1.562	0.0456	7916	78	2	234	7	390	11	547	16	679	20
	0.750	0.4418	1.147	0.0335	10000	57	2	172	5	287	8	402	12	499	15

Features/Benefits

- Cast iron power frame
- Ductile Iron Crankshaft
- Cast iron crossheads with upper/lower oil grooves
- Flooded sump, splash distribution lubrication
- Ductile iron connecting rods
- Alloy steel crosshead pins

- Bronze bearing crosshead pin bushings
- Cast iron crossheads with upper/lower oil grooves
- Rated rod load is 4760 lbs

Disclaimer I

This website is intended as a reference tool only. It has been constructed from published data that is based on manufacturer's sales and engineering documents that are either current, historical and obsolete. Much of the machinery data contained herein has been re-rated through the years with different engineering criteria which maybe in conflict with legacy data. Much of the content published here is calculated online with the use of dynamic data using formulas and extrapolations considered to be sound engineering formulas and are correct to the degree that the data used is accurate. We have done our best to be as precise as as possible in this posting but do not represent any of the calculations or performance data to be entirely accurate. The data published here is intended to be general information rather than actual and to serve as a reference rather than a technical absolute. The user of such data should confirm such information independently.