

Wheatley, Q350-4 (350Q-5L), Quintuplex, Plunger Pump

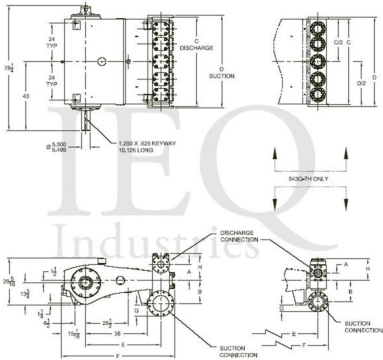
Pumps in this series

- [Q350-2 \(350Q-5H\)](#)
- [Q350-3 \(350Q-5M\)](#)
- [Q350-4 \(350Q-5L\)](#)

- 350 horsepower 5" stroke horizontal quintuplex single acting plunger pump
- Available in three fluid end materials
- Pump speeds up to 360 RPM

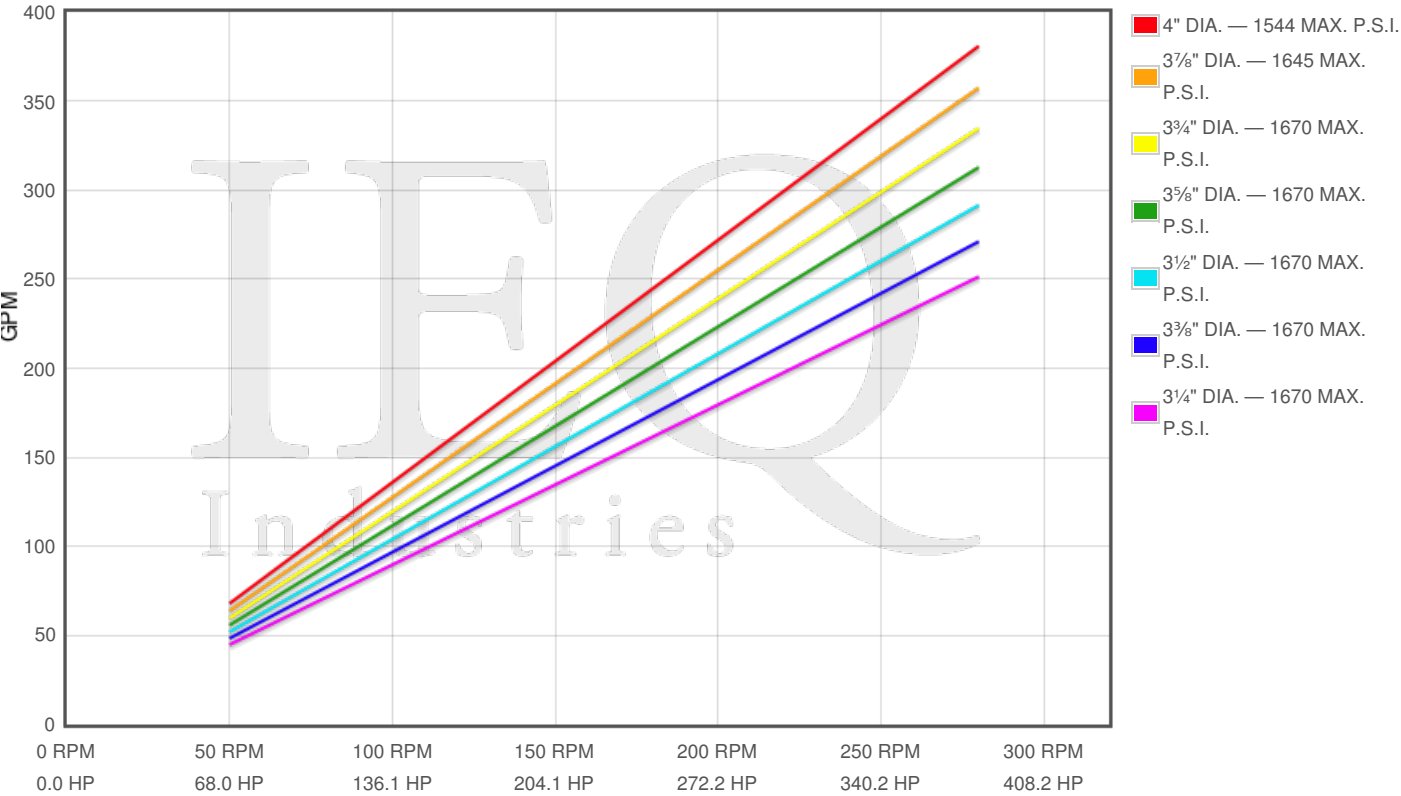
Specs

Spec	U.S. Standard
Type:	quintuplex
Minimum Plunger Diameter:	3 1/4"
Maximum Plunger Diameter:	4"
Stroke length:	5"
Maximum Working Pressure:	1,670 PSI
Rod/Piston Load:	19400lb
Gallons per Minute:	489.6
Barrels per Day:	16786
Brake Horse Power:	350.0



Pump Curves

Hover over Power Curves to reveal RPM and GPM



Performance Data Table

Pump	English Units					50 RPM		150 RPM		250 RPM		280 RPM	
	Plunger Dia. In.	Plunger Area Sq. In.	BPD per RPM	GPM per RPM	Max Press. PSI	BPD	GPM	BPD	GPM	BPD	GPM	BPD	GPM
Q350-4 350Q-5L	4.000	12.5664	46.628	1.3600	1544	2331	68	6994	204	11657	340	13056	381
	3.875	11.7932	43.760	1.2763	1645	2188	64	6564	191	10940	319	12253	357
	3.750	11.0447	40.982	1.1953	1670	2049	60	6147	179	10246	299	11475	335
	3.625	10.3206	38.295	1.1170	1670	1915	56	5744	168	9574	279	10723	313
	3.500	9.6211	35.700	1.0412	1670	1785	52	5355	156	8925	260	9996	292
	3.375	8.9462	33.195	0.9682	1670	1660	48	4979	145	8299	242	9295	271
	3.250	8.2958	30.782	0.8978	1670	1539	45	4617	135	7696	224	8619	251

Features/Benefits

Power End Features:

- Cast Iron Power Frame

- Forged Steel Crankshaft
- Heavy-Duty, Tapered Roller Crankshaft Bearings
- Precision type, Aluminum Alloy Crankpin Bearings
- Ductile Iron Connecting Rods
- Alloy steel crosshead pins
- Bronze bearing crosshead pin bushings
- Cast iron crossheads with upper/lower oil grooves
- Stainless steel extension rods
- External pressure lubrication
- Rated rod load is 13850 lbs.

Fluid End Features:

- Alloy steel crosshead pins
- Bronze bearing crosshead pin bushings
- Cast iron crossheads with upper/lower oil grooves
- Stainless steel extension rods
- External pressure lubrication
- Fluid end with bolted type valve covers
- Removable stuffing boxes & glands
- Plungers -Solid Ceramic, or Tungsten Coated
- General Service Plunger Packing

Disclaimer I

This website is intended as a reference tool only. It has been constructed from published data that is based on manufacturer's sales and engineering documents that are either current, historical and obsolete. Much of the machinery data contained herein has been re-rated through the years with different engineering criteria which maybe in conflict with legacy data. Much of the content published here is calculated online with the use of dynamic data using formulas and extrapolations considered to be sound engineering formulas and are correct to the degree that the data used is accurate. We have done our best to be as precise as as possible in this posting but do not represent any of the calculations or performance data to be entirely accurate. The data published here is intended to be general information rather than actual and to serve as a reference rather than a technical absolute. The user of such data should confirm such information independently.