

Gaso, T140-4 (133T-4L), Triplex, Plunger Pump

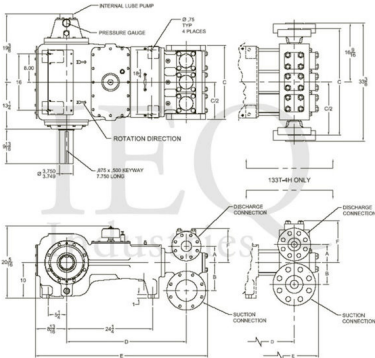
Pumps in this series

- T140-2 (133T-4H)
- T140-3 (133T-4M)
- T140-4 (133T-4L)

- 133 horsepower 4 1/2" stroke horizontal triplex single acting plunger pump
- Available in three fluid end materials
- Pump speeds up to 400 RPM
- Multiple gear reduction unit ratios

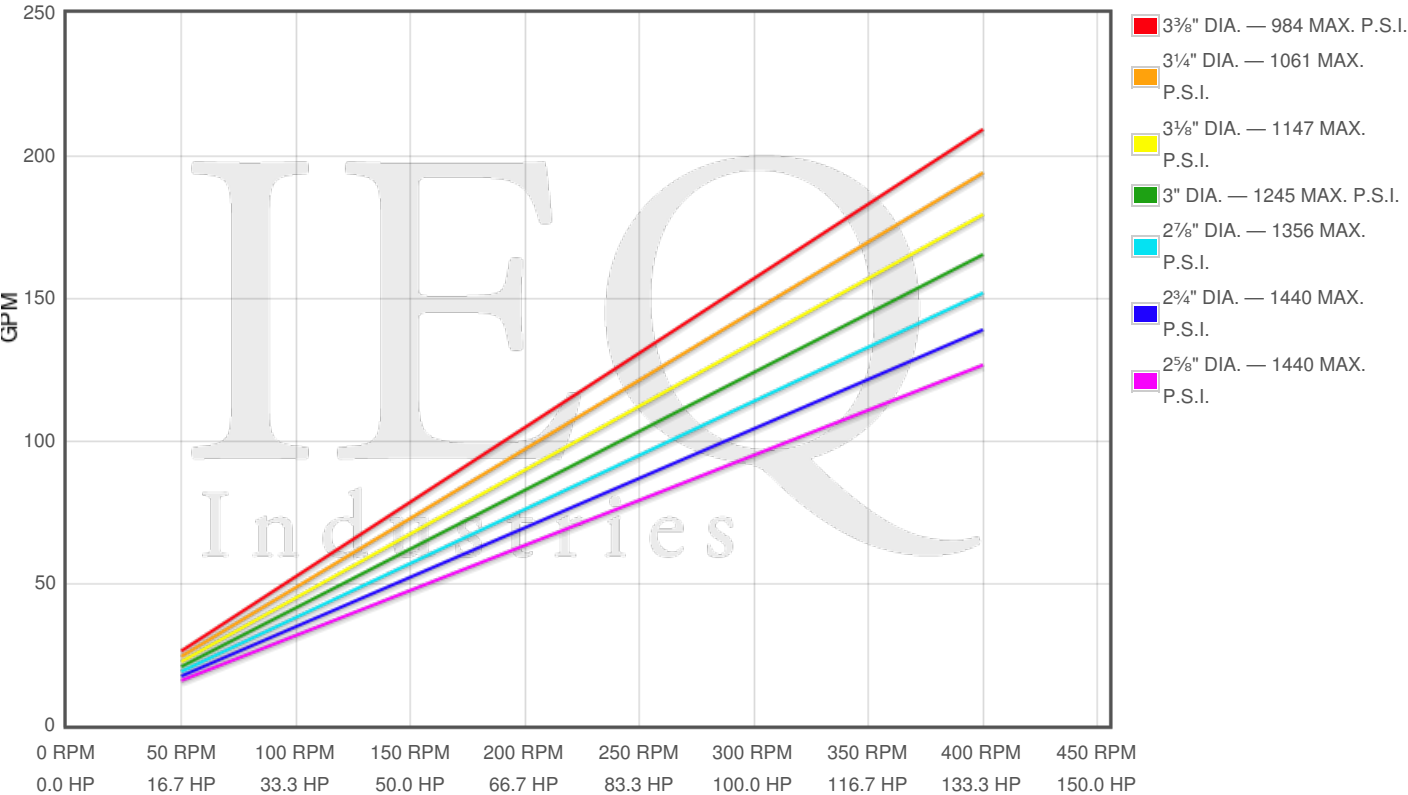
Specs

| Spec | U.S. Standard |
|---------------------------|---------------|
| Type: | triplex |
| Minimum Plunger Diameter: | 2 5/8" |
| Maximum Plunger Diameter: | 3 3/8" |
| Stroke length: | 4 1/2" |
| Maximum Working Pressure: | 1,440 PSI |
| Rod/Piston Load: | 8800lb |
| Gallons per Minute: | 209.1 |
| Barrels per Day: | 7169 |
| Brake Horse Power: | 133.0 |



Pump Curves

Hover over Power Curves to reveal RPM and GPM



Performance Data Table

| Pump | English Units | | | | | 50 RPM | | 150 RPM | | 250 RPM | | 350 RPM | | 400 RPM | |
|-------------------|------------------|----------------------|-------------|-------------|----------------|--------|-----|---------|-----|---------|-----|---------|-----|---------|-----|
| | Plunger Dia. In. | Plunger Area Sq. In. | BPD per RPM | GPM per RPM | Max Press. PSI | BPD | GPM | BPD | GPM | BPD | GPM | BPD | GPM | BPD | GPM |
| T140-4 133T-4L | 3.375 | 8.9462 | 17.926 | 0.5228 | 984 | 896 | 26 | 2689 | 78 | 4481 | 131 | 6274 | 183 | 7170 | 209 |
| | 3.250 | 8.2958 | 16.622 | 0.4848 | 1061 | 831 | 24 | 2493 | 73 | 4156 | 121 | 5818 | 170 | 6649 | 194 |
| | 3.125 | 7.6699 | 15.368 | 0.4482 | 1147 | 768 | 22 | 2305 | 67 | 3842 | 112 | 5379 | 157 | 6147 | 179 |
| | 3.000 | 7.0686 | 14.163 | 0.4131 | 1245 | 708 | 21 | 2125 | 62 | 3541 | 103 | 4957 | 145 | 5665 | 165 |
| | 2.875 | 6.4918 | 13.008 | 0.3794 | 1356 | 650 | 19 | 1951 | 57 | 3252 | 95 | 4553 | 133 | 5203 | 152 |
| | 2.750 | 5.9396 | 11.901 | 0.3471 | 1440 | 595 | 17 | 1785 | 52 | 2975 | 87 | 4165 | 121 | 4761 | 139 |
| | 2.625 | 5.4119 | 10.844 | 0.3163 | 1440 | 542 | 16 | 1627 | 47 | 2711 | 79 | 3795 | 111 | 4338 | 127 |

Features/Benefits

- Cast iron power frame

- Forged Steel Crankshaft
- Heavy-duty, tapered roller crankshaft bearings
- Precision type, aluminum alloy crankpin bearings
- Ductile iron connecting rods
- Minimum pump speed is 150 with standard power end construction
- Bronze bearing crosshead pin bushings
- Cast iron crossheads with upper/lower oil grooves
- Stainless steel extension rods
- Internal pressure lubrication
- Alloy steel crosshead pins
- Rated rod load is 8800 lbs.
- Plungers - Solid Ceramic, or Tungsten coated
- Spherical suction and discharge valves
- Valve Seat & Valve Body: Nitronic 50
- Spring: Inconel
- Cage: 316L Stainless Steel
- Severe duty valves with inserts available

Disclaimer I

This website is intended as a reference tool only. It has been constructed from published data that is based on manufacturer's sales and engineering documents that are either current, historical and obsolete. Much of the machinery data contained herein has been re-rated through the years with different engineering criteria which maybe in conflict with legacy data. Much of the content published here is calculated online with the use of dynamic data using formulas and extrapolations considered to be sound engineering formulas and are correct to the degree that the data used is accurate. We have done our best to be as precise as as possible in this posting but do not represent any of the calculations or performance data to be entirely accurate. The data published here is intended to be general information rather than actual and to serve as a reference rather than a technical absolute. The user of such data should confirm such information independently.

Copyright and Disclaimers

WheatleyGas.com is your resource for Gaso pumps, Gaso pump parts and a supplier of ORIGINAL GASO PARTS and equipment, new used and remanufactured Wheatley, GASO and Wheatley/GASO plunger and piston pumps and pump parts and is not affiliated with Wheatley/GASO Inc. or its parent company, National Oilwell Varco, Copyright ©2024 IEQ Industries, a Gallagher Fluid Handling Company. All rights reserved, *Used under license from Intelleg Holdings, LLC.