

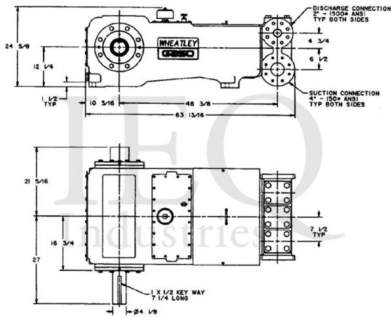
Gaso, T165-2, Triplex, Plunger Pump

Pumps in this series

- T165-2
- T165-3
- T165-4

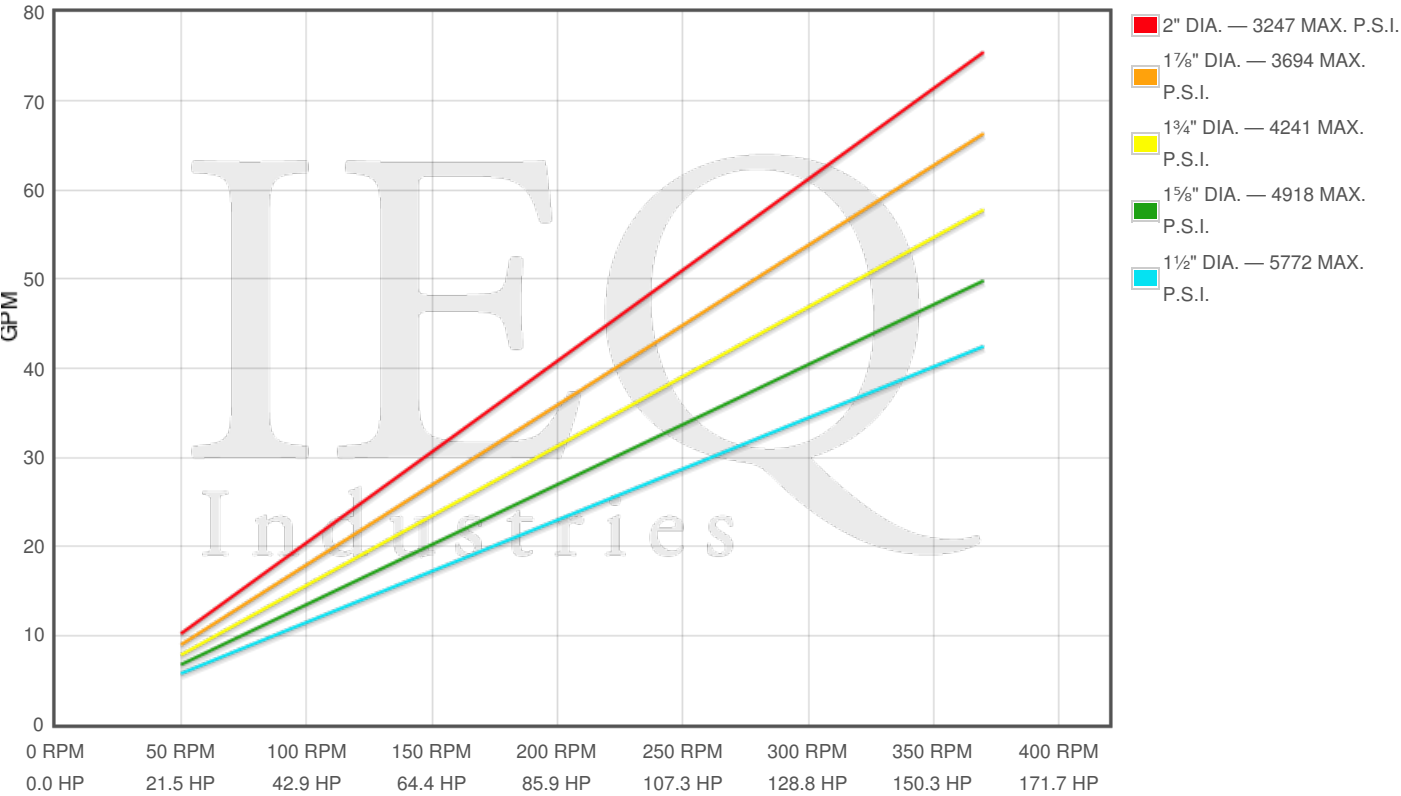
Specs

Spec	U.S. Standard
Type:	triplex
Minimum Plunger Diameter:	1 1/2"
Maximum Plunger Diameter:	2"
Stroke length:	5"
Maximum Working Pressure:	5,775 PSI
Rod/Piston Load:	10200lb
Gallons per Minute:	75.5
Barrels per Day:	2589
Brake Horse Power:	159.0



Pump Curves

Hover over Power Curves to reveal RPM and GPM



Performance Data Table

Pump	English Units					50 RPM		150 RPM		250 RPM		350 RPM		370 RPM	
	Plunger Dia. In.	Plunger Area Sq. In.	BPD per RPM	GPM per RPM	Max Press. PSI	BPD	GPM	BPD	GPM	BPD	GPM	BPD	GPM	BPD	GPM
T165-2	2.000	3.1416	6.994	0.2040	3247	350	10	1049	31	1749	51	2448	71	2588	75
	1.875	2.7612	6.147	0.1793	3694	307	9	922	27	1537	45	2152	63	2275	66
	1.750	2.4053	5.355	0.1562	4241	268	8	803	23	1339	39	1874	55	1981	58
	1.625	2.0739	4.617	0.1347	4918	231	7	693	20	1154	34	1616	47	1708	50
	1.500	1.7671	3.934	0.1147	5772	197	6	590	17	984	29	1377	40	1456	42

Disclaimer I

This website is intended as a reference tool only. It has been constructed from published data that is based on manufacturer's sales and engineering documents that are either current, historical and obsolete. Much of the machinery data contained herein has been re-rated through the years with different engineering criteria which maybe in conflict with legacy data. Much of the content published here is calculated online with the use of dynamic data using formulas and extrapolations considered to be sound engineering formulas and are correct to the degree that the data used is accurate. We have done our best to be as precise as as possible in this posting but do not represent any of the calculations or performance data to be entirely accurate. The data published here is intended to be general information rather than actual and to serve as a reference rather than a technical absolute. The user of such data should confirm such information independently.

Copyright and Disclaimers

WheatleyGas.com is your resource for Gaso pumps, Gaso pump parts and a supplier of ORIGINAL GASO PARTS and equipment, new used and remanufactured Wheatley, GASO and Wheatley/GASO plunger and piston pumps and pump parts and is not affiliated with Wheatley/GASO Inc. or its parent company, National Oilwell Varco, Copyright Å©2024 IEQ Industries, a Gallagher Fluid Handling Company. All rights reserved, \*Used under license from IntelleQ Holdings, LLC.