

Gaso, T165-3, Triplex, Plunger Pump

Pumps in this series

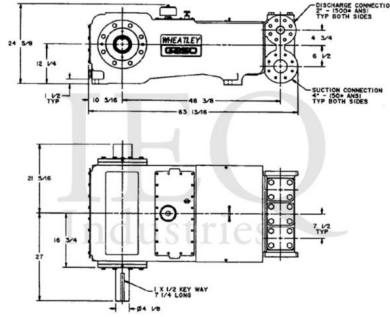
[T165-2](#)

[T165-3](#)

[T165-4](#)

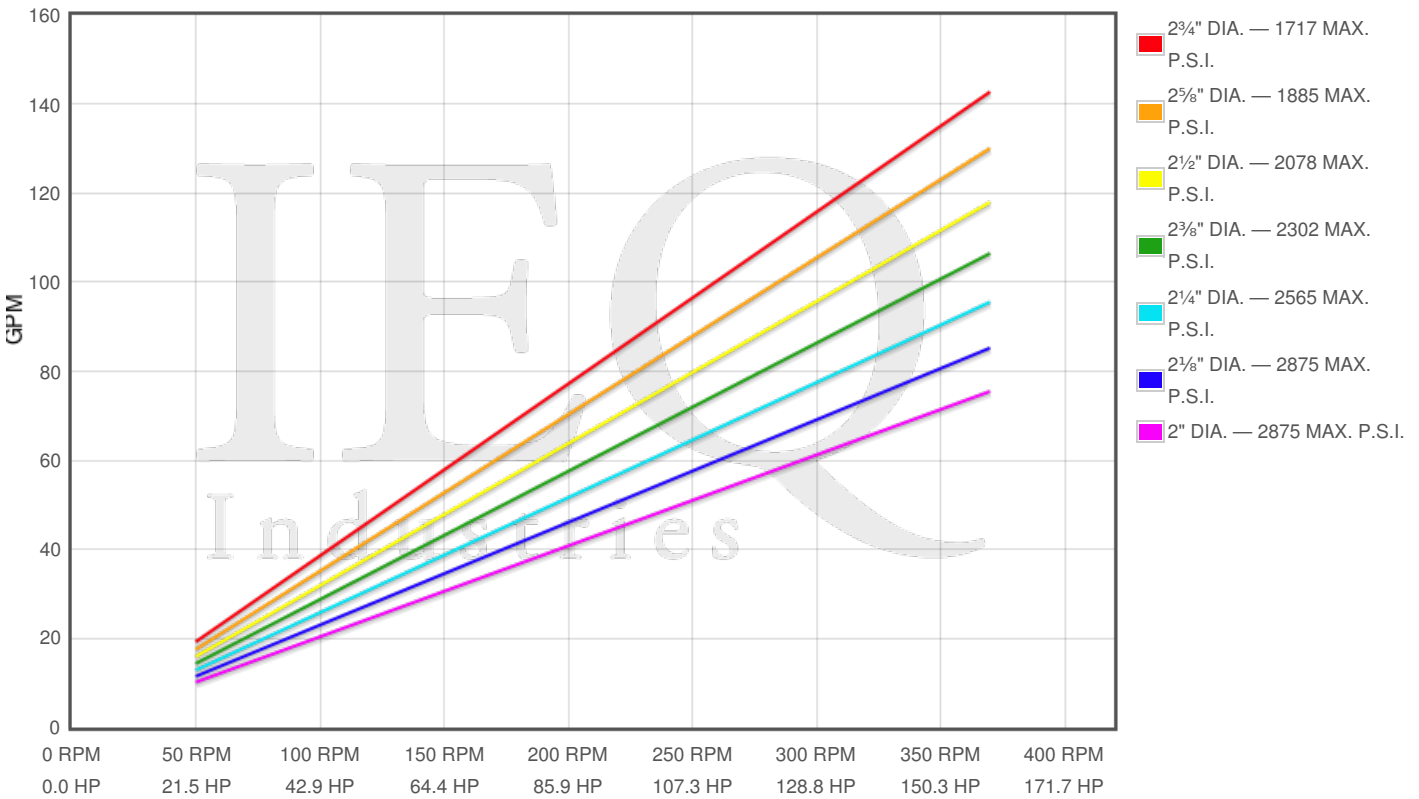
Specs

Spec	U.S. Standard
Type:	triplex
Minimum Plunger Diameter:	2"
Maximum Plunger Diameter:	2 3/4"
Stroke length:	5"
Maximum Working Pressure:	2,875 PSI
Rod/Piston Load:	10200lb
Gallons per Minute:	142.0
Barrels per Day:	4869
Brake Horse Power:	159.0



Pump Curves

Hover over Power Curves to reveal RPM and GPM



Performance Data Table

Pump	English Units					50 RPM		150 RPM		250 RPM		350 RPM		370 RPM	
	Plunger Dia. In.	Plunger Area Sq. In.	BPD per RPM	GPM per RPM	Max Press. PSI	BPD	GPM	BPD	GPM	BPD	GPM	BPD	GPM	BPD	GPM
T165-3	2.750	5.9396	13.224	0.3857	1717	661	19	1984	58	3306	96	4628	135	4893	143
	2.625	5.4119	12.049	0.3514	1885	602	18	1807	53	3012	88	4217	123	4458	130
	2.500	4.9087	10.929	0.3187	2078	546	16	1639	48	2732	80	3825	112	4044	118
	2.375	4.4301	9.863	0.2877	2302	493	14	1480	43	2466	72	3452	101	3649	106
	2.250	3.9761	8.852	0.2582	2565	443	13	1328	39	2213	65	3098	90	3275	96
	2.125	3.5466	7.896	0.2303	2875	395	12	1184	35	1974	58	2764	81	2922	85
	2.000	3.1416	6.994	0.2040	2875	350	10	1049	31	1749	51	2448	71	2588	75

Disclaimer I

This website is intended as a reference tool only. It has been constructed from published data that is based on manufacturer's sales and engineering documents that are either current, historical and obsolete. Much of the machinery data contained herein has been re-rated through the years with different engineering criteria which maybe in conflict with legacy data. Much of the content published here is calculated online with the use of dynamic data using formulas and extrapolations considered to be sound engineering formulas and are correct to the degree that the data used is accurate. We have done our best to be as precise as as possible in this posting but do not represent any of the calculations or performance data to be entirely accurate. The data published here is intended to be general information rather than actual and to serve as a reference rather than a technical absolute. The user of such data should confirm such information independently.

Copyright and Disclaimers

WheatleyGas.com is your resource for Gaso pumps, Gaso pump parts and a supplier of ORIGINAL GASO PARTS and equipment, new used and remanufactured Wheatley, GASO and Wheatley/GASO plunger and piston pumps and pump parts and is not affiliated with Wheatley/GASO Inc. or its parent company, National Oilwell Varco, Copyright ©2024 IEQ Industries, a Gallagher Fluid Handling Company. All rights reserved, *Used under license from IntelleQ Holdings, LLC.