

Wheatley, T365-AL (59T-3L), Triplex, Plunger Pump

Pumps in this series

[T365-AL \(59T-3L\)](#)

[T365-AM \(59T-3M\)](#)

[T365-H \(59T-3H\)](#)

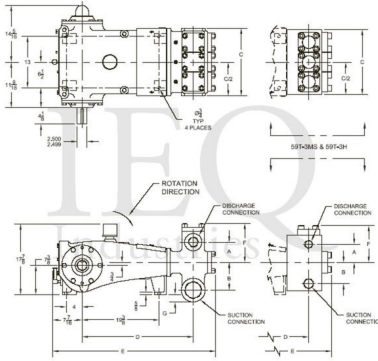
[T365-L](#)

[T365-MS \(59T-3MS\)](#)

- 59 horsepower 3 1/2" stroke horizontal triplex single acting plunger pump
- Available in four different fluid end materials
- Pump speeds up to 420 RPM
- Multiple accessory gear reduction unit ratios

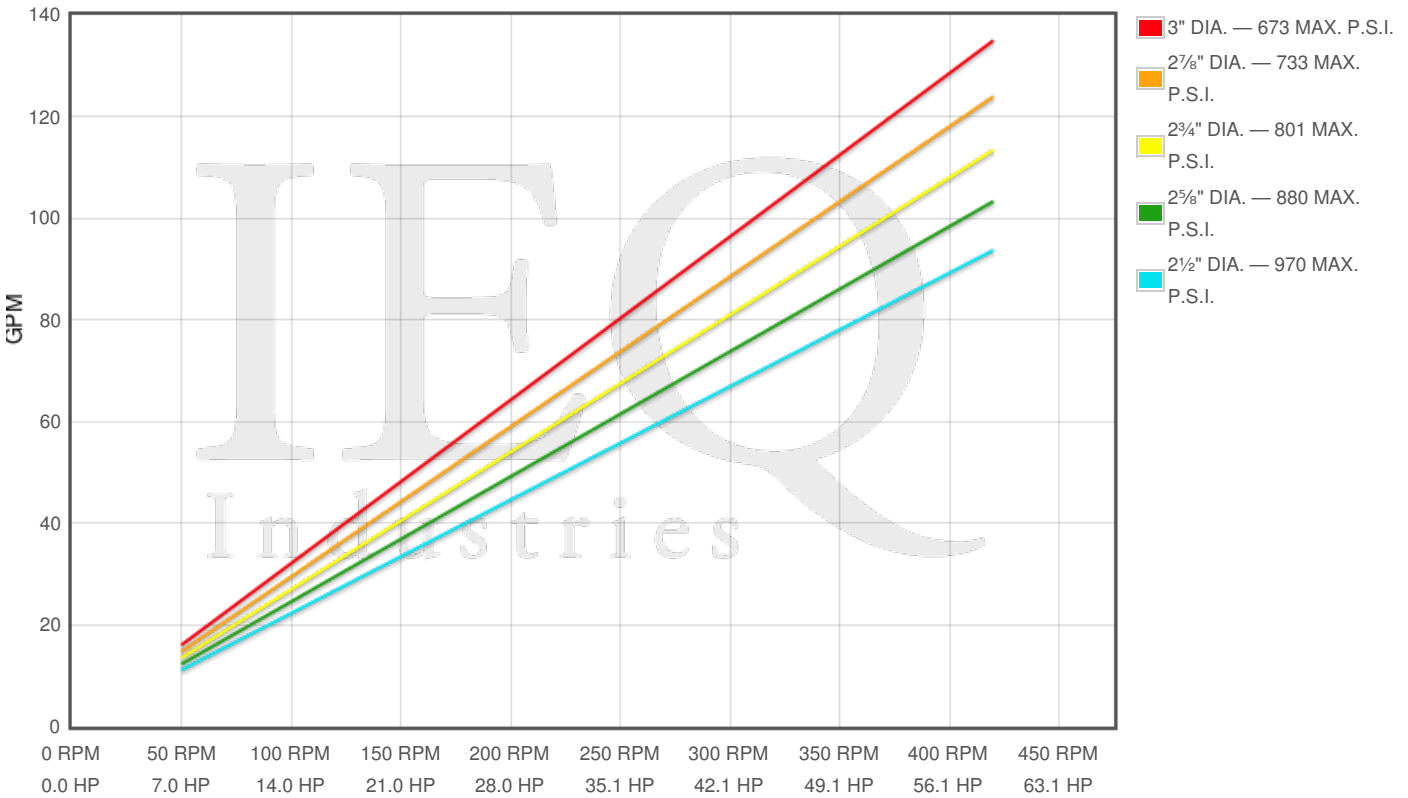
Specs

Spec	U.S. Standard
Type:	triplex
Minimum Plunger Diameter:	2 1/2"
Maximum Plunger Diameter:	3"
Stroke length:	3 1/2"
Maximum Working Pressure:	970 PSI
Rod/Piston Load:	4760lb
Gallons per Minute:	134.9
Barrels per Day:	4625
Brake Horse Power:	59.0



Pump Curves

Hover over Power Curves to reveal RPM and GPM



Performance Data Table

Pump	English Units					50 RPM		150 RPM		250 RPM		350 RPM		420 RPM	
	Plunger Dia. In.	Plunger Area Sq. In.	BPD per RPM	GPM per RPM	Max Press. PSI	BPD	GPM	BPD	GPM	BPD	GPM	BPD	GPM	BPD	GPM
T365-AL 59T-3L	3.000	7.0686	11.016	0.3213	673	551	16	1652	48	2754	80	3856	112	4627	135
	2.875	6.4918	10.117	0.2951	733	506	15	1518	44	2529	74	3541	103	4249	124
	2.750	5.9396	9.256	0.2700	801	463	13	1389	40	2314	67	3240	94	3888	113
	2.625	5.4119	8.434	0.2460	880	422	12	1265	37	2109	61	2952	86	3542	103
	2.500	4.9087	7.650	0.2231	970	382	11	1148	33	1913	56	2678	78	3213	94

Features/Benefits

- Cast iron power frame
- Ductile Iron Crankshaft

- Heavy-duty roller crankshaft bearings
- Bi-Metal crankpin bearings
- Alloy steel crosshead pins
- Bronze bearing crosshead pin bushings
- Cast iron crossheads with upper/lower oil grooves

Disclaimer I

This website is intended as a reference tool only. It has been constructed from published data that is based on manufacturer's sales and engineering documents that are either current, historical and obsolete. Much of the machinery data contained herein has been re-rated through the years with different engineering criteria which maybe in conflict with legacy data. Much of the content published here is calculated online with the use of dynamic data using formulas and extrapolations considered to be sound engineering formulas and are correct to the degree that the data used is accurate. We have done our best to be as precise as as possible in this posting but do not represent any of the calculations or performance data to be entirely accurate. The data published here is intended to be general information rather than actual and to serve as a reference rather than a technical absolute. The user of such data should confirm such information independently.

Copyright and Disclaimers

WheatleyGas.com is your resource for Gaso pumps, Gaso pump parts and a supplier of ORIGINAL GASO PARTS and equipment, new used and remanufactured Wheatley, GASO and Wheatley/GASO plunger and piston pumps and pump parts and is not affiliated with Wheatley/GASO Inc. or its parent company, National Oilwell Varco, Copyright ©2024 IEQ Industries, a Gallagher Fluid Handling Company. All rights reserved, *Used under license from IntelIQ Holdings, LLC.